

BMI1 IHC Antibody

Rabbit Polyclonal

Antigen Affinity Purified

Protein ID NP_005171.4

Catalog No. IHC-00606-T

GeneID 648

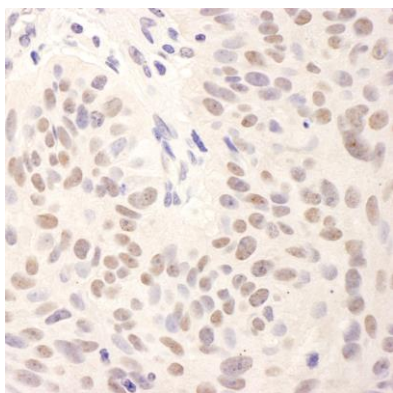
Lot No. IHC-00606-T-2



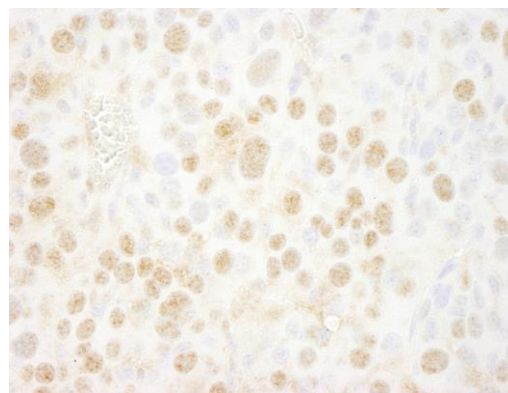
APPLICATIONS	IHC
SPECIES REACTIVITY	Human, Mouse
AMOUNT	10 µl
CONCENTRATION	250 µg/ml
STORAGE/SHELF LIFE	2 – 8° C / 1 year from date of receipt
PHYSICAL STATE	Liquid
BUFFER	Tris-buffered Saline containing 0.1% BSA and 0.09% Sodium Azide
ISOTYPE	IgG
ORIGIN	USA
PRODUCTION PROCEDURES	<p>Antibody was affinity purified using an epitope specific to BMI1 immobilized on solid support.</p> <p>The epitope recognized by IHC-00606-T maps to a region between residue 276 and 326 of human B lymphoma Mo-MLV insertion region 1 homolog using the numbering given in entry NP_005171.4 (GeneID 648).</p> <p>Immunoglobulin concentration was determined by extinction coefficient: absorbance at 280 nm of 1.4 equals 1.0 mg of IgG.</p>
APPLICATIONS	<p>Centrifuge tube to remove product from lid. Optimal working dilutions should be determined experimentally by the investigator. Prepare working dilution immediately before use.</p> <p>Immunohistochemistry 1:100 – 1:500. Epitope retrieval with citrate buffer pH 6.0 is recommended for FFPE tissue sections.</p>
APPLICATION NOTES	<p>Epitope exposure is recommended.</p> <p>Epitope exposure with citrate buffer will enhance staining.</p> <p>Likely to work with frozen sections.</p> <p>In some cases, the antibody may be diluted further than indicated.</p>
IHC HUMAN CONTROLS	Breast Carcinoma, Linitis Plastica Stomach Cancer, Ovarian Carcinoma, Pancreatic Islet Cell Tumor
IHC MOUSE CONTROLS	Renal Cell Carcinoma
ADDITIONAL INFO	<p>https://www.bethyl.com/product/IHC-00606-T</p> <p>Use the link above to view SDS, a current list of citations, and other product specific information.</p>

This document certifies that this product has met all of the quality control standards defined by Bethyl Laboratories, Inc.
Eric McIntush, PhD | Chief Scientific Officer

Date: June 21, 2019

**Detection of human BMI1 by immunohistochemistry.**

Sample: FFPE section of human lung carcinoma. *Antibody:* Affinity purified rabbit anti-BMI1 (Cat. No. IHC-00606-T Lot2) used at a dilution of 1:500. *Detection:* DAB

**Detection of mouse BMI1 by immunohistochemistry.**

Sample: FFPE section of mouse renal cell carcinoma. *Antibody:* Affinity purified rabbit anti-BMI1 (Cat. No. IHC-00606-T) used at a dilution of 1:250. *Detection:* DAB