

DDX6 IHC Antibody

Rabbit Polyclonal

Antigen Affinity Purified

Protein ID P26196

Catalog No. IHC-00430-T

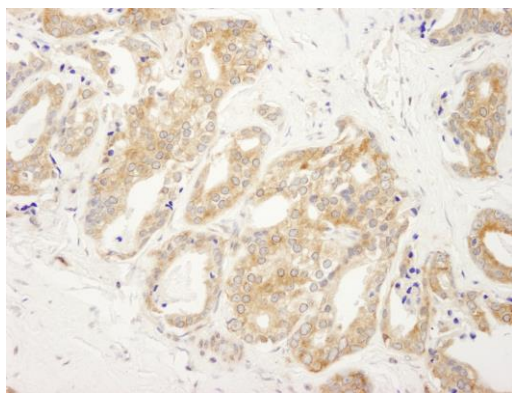
GeneID 1656

Lot No. IHC-00430-T-1



APPLICATIONS	IHC
SPECIES REACTIVITY	Human, Mouse
AMOUNT	10 µl
CONCENTRATION	250 µg/ml
STORAGE/SHELF LIFE	2 – 8° C / 1 year from date of receipt
PHYSICAL STATE	Liquid
BUFFER	Tris-buffered Saline containing 0.1% BSA and 0.09% Sodium Azide
ISOTYPE	IgG
ORIGIN	USA
PRODUCTION PROCEDURES	Antibody was affinity purified using an epitope specific to DDX6 immobilized on solid support. The epitope recognized by IHC-00430-T maps to a region between residues 1 and 50 of human DEAD (Asp-Glu-Ala-Asp) box polypeptide 6 using the numbering given Swiss-Prot entry P26196 (GeneID 1656).
APPLICATIONS	Centrifuge tube to remove product from lid. Optimal working dilutions should be determined experimentally by the investigator. Prepare working dilution immediately before use. Immunohistochemistry 1:100 – 1:500
APPLICATION NOTES	Epitope exposure is recommended. Epitope exposure with tris-EDTA pH9.0 buffer will enhance staining. Likely to work with frozen sections.
IHC HUMAN CONTROLS	In some cases, the antibody may be diluted further than indicated. Breast Carcinoma, Colon Carcinoma, Non-Small Cell Lung Cancer, Ovarian Carcinoma, Prostate Carcinoma, Stomach Adenocarcinoma, Testicular Seminoma
IHC MOUSE CONTROLS	Colon Carcinoma CT26, Renal Cell Carcinoma, Teratoma
ADDITIONAL INFO	https://www.bethyl.com/product/IHC-00430-T Use the link above to view SDS, a current list of citations, and other product specific information.

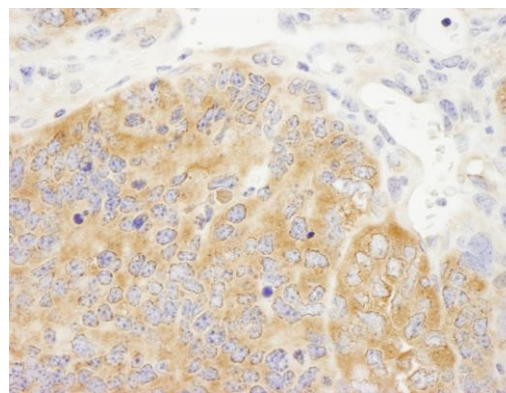
This document certifies that this product has met all of the quality control standards defined by Bethyl Laboratories, Inc.
Eric McIntush, PhD | Chief Scientific Officer Date: June 21, 2019

**Detection of human DDX6 by immunohistochemistry.**

Sample: FFPE section of human prostate carcinoma.

Antibody: Affinity purified rabbit anti-DDX6 (Cat. No.

IHC-00430-T) used at a dilution of 1:250. *Detection:* DAB

**Detection of mouse DDX6 by immunohistochemistry.**

Sample: FFPE section of mouse renal cell carcinoma.

Antibody: Affinity purified rabbit anti-DDX6 (Cat. No.

IHC-00430-T) used at a dilution of 1:250. *Detection:* DAB