

# BCR IHC Antibody

Rabbit Polyclonal

Antigen Affinity Purified

Protein ID NP\_004318.3

Catalog No. IHC-00406-T

GeneID 613

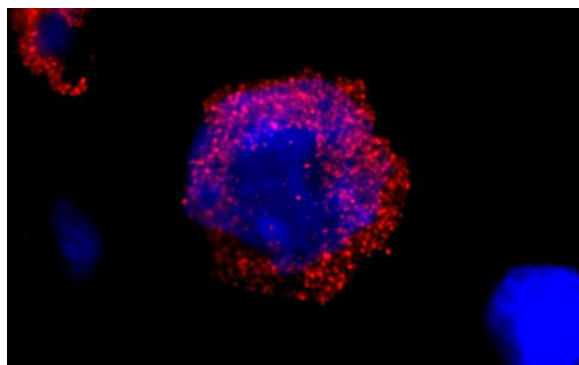
Lot No. IHC-00406-T-1



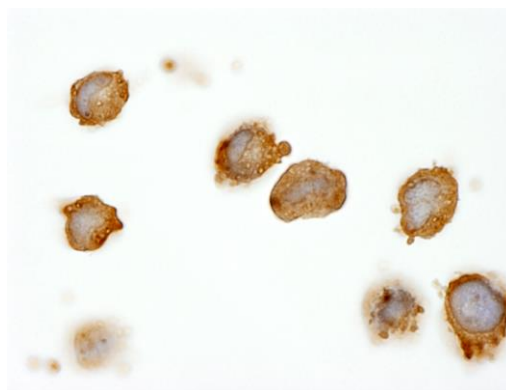
<b>APPLICATIONS</b>	ICC, ICC-IF
<b>SPECIES REACTIVITY</b>	Human
<b>AMOUNT</b>	10 µl
<b>CONCENTRATION</b>	250 µg/ml
<b>STORAGE/SHELF LIFE</b>	2 – 8° C / 1 year from date of receipt
<b>PHYSICAL STATE</b>	Liquid
<b>BUFFER</b>	Tris-buffered Saline containing 0.1% BSA and 0.09% Sodium Azide
<b>ISOTYPE</b>	IgG
<b>ORIGIN</b>	USA
<b>PRODUCTION PROCEDURES</b>	<p>Antibody was affinity purified using an epitope specific to BCR immobilized on solid support.</p> <p>The epitope recognized by IHC-00406-T maps to a region between residue 50 and 100 of human breakpoint cluster region using the numbering given in entry NP_004318.3 (GeneID 613).</p> <p>Antibody concentration was determined by extinction coefficient: absorbance at 280 nm of 1.4 equals 1.0 mg of IgG.</p>
<b>APPLICATIONS</b>	<p>Centrifuge tube to remove product from lid. Optimal working dilutions should be determined experimentally by the investigator. Prepare working dilution immediately before use.</p> <p>Immunocytochemistry 1:100 – 1:500</p> <p>Immunofluorescence (ICC) 1:50 – 1:500</p>
<b>APPLICATION NOTES</b>	<p>Epitope exposure is recommended for formalin-fixed, paraffin-embedded cells.</p> <p>Epitope exposure with citrate buffer will enhance staining.</p> <p>Likely to work with frozen sections.</p> <p>In some cases, the antibody may be diluted further than indicated.</p>
<b>IHC HUMAN CONTROLS</b>	K-562 Cells
<b>ADDITIONAL INFO</b>	<p><a href="https://www.bethyl.com/product/IHC-00406-T">https://www.bethyl.com/product/IHC-00406-T</a></p> <p>Use the link above to view SDS, a current list of citations, and other product specific information.</p>

This document certifies that this product has met all of the quality control standards defined by Bethyl Laboratories, Inc.  
Eric McIntush, PhD | Chief Scientific Officer

Date: June 21, 2019

**Detection of human BCR by immunocytochemistry.**

*Sample:* FFPE section of human K-562 cells (contains the chromosomal translocation, t(9:22) that creates the BCR/ABL fusion gene). *Antibody:* Affinity purified rabbit anti-BCR (Cat. No. IHC-00406-T) used at a dilution of 1:250. *Detection:* Red-fluorescent goat anti-rabbit IgG highly cross-adsorbed Antibody Hilyte Plus™ 555 used at a dilution of 1:100.

**Detection of human BCR by immunocytochemistry.**

*Sample:* FFPE section of human K-562 cells (contains the chromosomal translocation, t(9:22) that creates the BCR/ABL fusion gene). *Antibody:* Affinity purified rabbit anti-BCR (Cat. No. IHC-00406-T) used at a dilution of 1:250. *Detection:* DAB