

BRD4 IHC Antibody

Rabbit Polyclonal

Antigen Affinity Purified

Protein ID NP_490597.1

Catalog No. IHC-00396-T

GeneID 23476

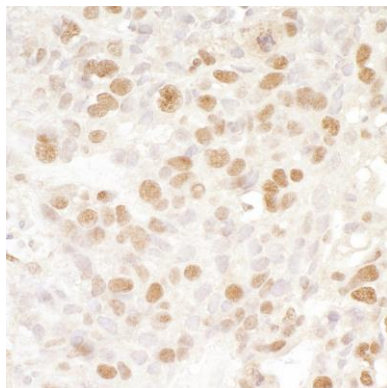
Lot No. IHC-00396-T-2



APPLICATIONS	IHC
SPECIES REACTIVITY	Human, Mouse
AMOUNT	10 µl
CONCENTRATION	100 µg/ml
STORAGE/SHELF LIFE	2 – 8° C / 1 year from date of receipt
PHYSICAL STATE	Liquid
BUFFER	Tris-buffered Saline containing 0.1% BSA and 0.09% Sodium Azide
ISOTYPE	IgG
ORIGIN	USA
PRODUCTION PROCEDURES	<p>Antibody was affinity purified using an epitope specific to BRD4 immobilized on solid support.</p> <p>The epitope recognized by IHC-00396-T maps to a region between residue 1312 and 1362 of human bromodomain-containing protein 4 using the numbering given in entry NP_490597.1 (GeneID 23476).</p> <p>Antibody concentration was determined by extinction coefficient: absorbance at 280 nm of 1.4 equals 1.0 mg of IgG.</p>
APPLICATIONS	<p>Centrifuge tube to remove product from lid. Optimal working dilutions should be determined experimentally by the investigator. Prepare working dilution immediately before use.</p> <p>Immunohistochemistry 1:100 – 1:500</p>
APPLICATION NOTES	<p>Epitope exposure is recommended.</p> <p>Epitope exposure with citrate or tris-EDTA pH9.0 buffer will enhance staining.</p> <p>Likely to work with frozen sections.</p> <p>In some cases, the antibody may be diluted further than indicated.</p>
IHC HUMAN CONTROLS	Anaplastic Thyroid Carcinoma, Breast Carcinoma, Colon Carcinoma, Ovarian Carcinoma, Pancreatic Islet Cell Tumor, Placenta, Prostate Carcinoma
IHC MOUSE CONTROLS	Colon Carcinoma CT26, Renal Cell Carcinoma, Squamous Cell Carcinoma
ADDITIONAL INFO	<p>https://www.bethyl.com/product/IHC-00396-T</p> <p>Use the link above to view SDS, a current list of citations, and other product specific information.</p>

This document certifies that this product has met all of the quality control standards defined by Bethyl Laboratories, Inc.
Eric McIntush, PhD | Chief Scientific Officer

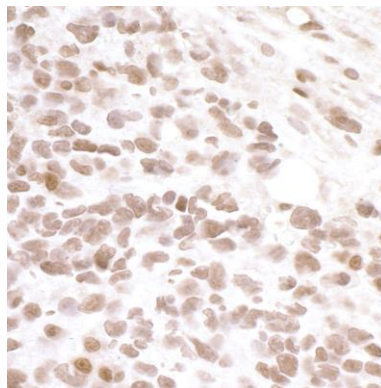
Date: July 26, 2019

**Detection of human BRD4 by immunohistochemistry.**

Sample: FFPE section of human ovarian carcinoma.

Antibody: Affinity purified rabbit anti-BRD4 (Cat. No.

IHC-00396-T Lot2) used at a dilution of 1:500. *Detection:* DAB

**Detection of mouse BRD4 by immunohistochemistry.**

Sample: FFPE section of mouse teratoma. *Antibody:* Affinity purified rabbit anti-BRD4 (Cat. No. IHC-00396-T Lot2)

used at a dilution of 1:100. *Detection:* DAB