

USP1 IHC Antibody

Rabbit Polyclonal

Antigen Affinity Purified

Protein ID NP_003359.3

Catalog No. IHC-00391-T

GeneID 7398

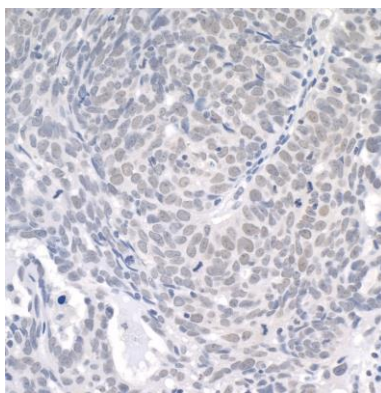
Lot No. IHC-00391-T-2



APPLICATIONS	IHC
SPECIES REACTIVITY	Human
AMOUNT	10 µl
CONCENTRATION	100 µg/ml
STORAGE/SHELF LIFE	2 – 8° C / 1 year from date of receipt
PHYSICAL STATE	Liquid
BUFFER	Tris-buffered Saline containing 0.1% BSA and 0.09% Sodium Azide
ISOTYPE	IgG
ORIGIN	USA
PRODUCTION PROCEDURES	<p>Antibody was affinity purified using an epitope specific to USP1 immobilized on solid support.</p> <p>The epitope recognized by IHC-00391-T maps to a region between residue 450 and 500 of human ubiquitin-specific-processing protease 1 using the numbering given in entry NP_003359.3 (GeneID 7398).</p> <p>Antibody concentration was determined by extinction coefficient: absorbance at 280 nm of 1.4 equals 1.0 mg of IgG.</p>
APPLICATIONS	<p>Centrifuge tube to remove product from lid. Optimal working dilutions should be determined experimentally by the investigator. Prepare working dilution immediately before use.</p> <p>Immunohistochemistry 1:100 – 1:500</p>
APPLICATION NOTES	<p>Epitope exposure is recommended.</p> <p>Epitope exposure with citrate or tris-EDTA pH9.0 buffer will enhance staining.</p> <p>Likely to work with frozen sections.</p> <p>In some cases, the antibody may be diluted further than indicated.</p>
IHC HUMAN CONTROLS	Anaplastic Thyroid Carcinoma, Breast Carcinoma, Prostate Carcinoma, Small Cell Lung Cancer
ADDITIONAL INFO	<p>https://www.bethyl.com/product/IHC-00391-T</p> <p>Use the link above to view SDS, a current list of citations, and other product specific information.</p>

This document certifies that this product has met all of the quality control standards defined by Bethyl Laboratories, Inc.
Eric McIntush, PhD | Chief Scientific Officer

Date: June 21, 2019

**Detection of human USP1 by immunohistochemistry.**

Sample: FFPE section of human ovarian carcinoma.

Antibody: Affinity purified rabbit anti-USP1 (Cat. No.

IHC-00391-T Lot2) used at a dilution of 1:500. *Detection:*

DAB staining.