

# NUP153 IHC Antibody

Rabbit Polyclonal

Antigen Affinity Purified

Protein ID NP\_005115.2

Catalog No. IHC-00366-T

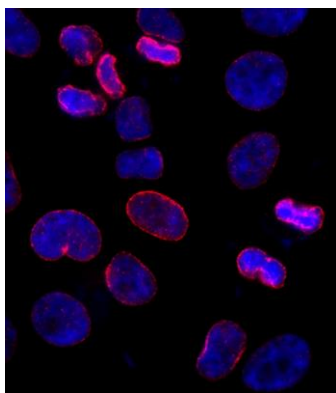
GeneID 9972

Lot No. IHC-00366-T-1

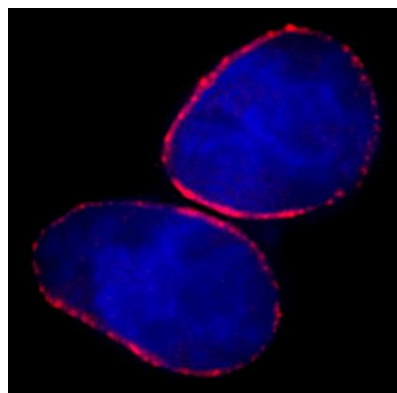


<b>APPLICATIONS</b>	ICC-IF
<b>SPECIES REACTIVITY</b>	Human
<b>AMOUNT</b>	10 µl
<b>CONCENTRATION</b>	250 µg/ml
<b>STORAGE/SHELF LIFE</b>	2 – 8° C / 1 year from date of receipt
<b>PHYSICAL STATE</b>	Liquid
<b>BUFFER</b>	Tris-buffered Saline containing 0.1% BSA and 0.09% Sodium Azide
<b>ISOTYPE</b>	IgG
<b>ORIGIN</b>	USA
<b>PRODUCTION PROCEDURES</b>	<p>Antibody was affinity purified using an epitope specific to NUP153 immobilized on solid support.</p> <p>The epitope recognized by IHC-00366-T maps to a region between residue 50 and 100 of human nucleoporin 153kDa using the numbering given in entry NP_005115.2 (GeneID 9972).</p> <p>Antibody concentration was determined by extinction coefficient: absorbance at 280 nm of 1.4 equals 1.0 mg of IgG.</p>
<b>APPLICATIONS</b>	<p>Centrifuge tube to remove product from lid. Optimal working dilutions should be determined experimentally by the investigator. Prepare working dilution immediately before use.</p> <p>Immunofluorescence 1:100 – 1:500 (ICC)</p>
<b>APPLICATION NOTES</b>	<p>Formaldehyde-Fixed Cells 1:100 – 1:500: Permeabilization with Triton-X 100 is recommended.</p> <p>Acetone fixation is not recommended.</p>
<b>IHC HUMAN CONTROLS</b>	HeLa Cells
<b>ADDITIONAL INFO</b>	<p><a href="https://www.bethyl.com/product/IHC-00366-T">https://www.bethyl.com/product/IHC-00366-T</a> Use the link above to view SDS, a current list of citations, and other product specific information.</p>

This document certifies that this product has met all of the quality control standards defined by Bethyl Laboratories, Inc.  
Eric McIntush, PhD | Chief Scientific Officer Date: June 21, 2019

**Detection of human NUP153 by immunocytochemistry.**

*Sample:* NBF-fixed asynchronous HeLa cells. *Antibody:* Affinity purified rabbit anti-NUP153 (Cat. No. IHC-00366-T) used at a dilution of 1:250. *Detection:* Red-fluorescent goat anti-rabbit IgG highly cross-adsorbed Antibody Hilyte Plus™ 555 used at a dilution of 1:100.

**Detection of human NUP153 by immunocytochemistry.**

*Sample:* NBF-fixed asynchronous HeLa cells. *Antibody:* Affinity purified rabbit anti-NUP153 (Cat. No. IHC-00366-T) used at a dilution of 1:250. *Detection:* Red-fluorescent goat anti-rabbit IgG highly cross-adsorbed Antibody used at a dilution of 1:100.