

# CENP-F/Mitosin IHC Antibody

Rabbit Polyclonal

Antigen Affinity Purified

Protein ID AAA82889.1

Catalog No. IHC-00315

GeneID 1063

Lot No. IHC-00315-1



<b>APPLICATIONS</b>	IHC, IHC-IF
<b>SPECIES REACTIVITY</b>	Human
<b>PRESUMED REACTIVITY</b>	Based on 100% sequence identity, this antibody is predicted to react with Orangutan, Gorilla and Chimpanzee
<b>AMOUNT</b>	100 µl
<b>CONCENTRATION</b>	100 µg/ml
<b>STORAGE/SHELF LIFE</b>	2 – 8° C / 1 year from date of receipt
<b>PHYSICAL STATE</b>	Liquid
<b>BUFFER</b>	Tris-buffered Saline containing 0.1% BSA and 0.09% Sodium Azide
<b>ISOTYPE</b>	IgG
<b>ORIGIN</b>	USA
<b>PRODUCTION PROCEDURES</b>	Antibody was affinity purified using an epitope specific to CENP-F/Mitosin immobilized on solid support.

The epitope recognized by IHC-00315 maps to a region between residue 2350 and 2400 of human centromere protein F (Mitosin) using the numbering given in entry AAA82889.1 (GeneID 1063).

Antibody concentration was determined by extinction coefficient: absorbance at 280 nm of 1.4 equals 1.0 mg of IgG.

**APPLICATIONS** Centrifuge tube to remove product from lid. Optimal working dilutions should be determined experimentally by the investigator. Prepare working dilution immediately before use.

Immunohistochemistry 1:100 – 1:500

Immunofluorescence 1:50 – 1:500  
(IHC)

**APPLICATION NOTES** Epitope exposure is recommended.

Epitope exposure with citrate buffer will enhance staining.

Likely to work with frozen sections.

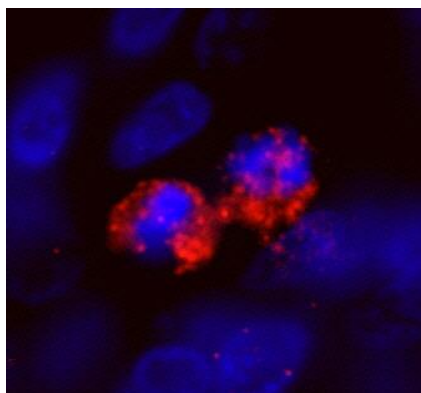
In some cases, the antibody may be diluted further than indicated.

**IHC HUMAN CONTROLS** Breast Carcinoma, Colon Carcinoma, Ewing Sarcoma, Stomach Adenocarcinoma

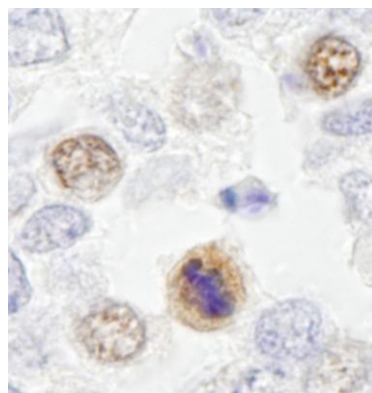
**ADDITIONAL INFO** <https://www.bethyl.com/product/IHC-00315>

Use the link above to view SDS, a current list of citations, and other product specific information.

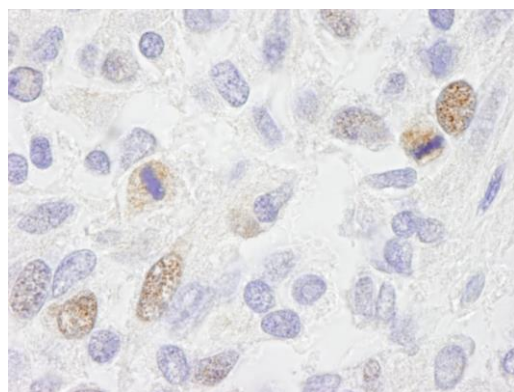
This document certifies that this product has met all of the quality control standards defined by Bethyl Laboratories, Inc.  
Eric McIntush, PhD | Chief Scientific Officer Date: June 21, 2019



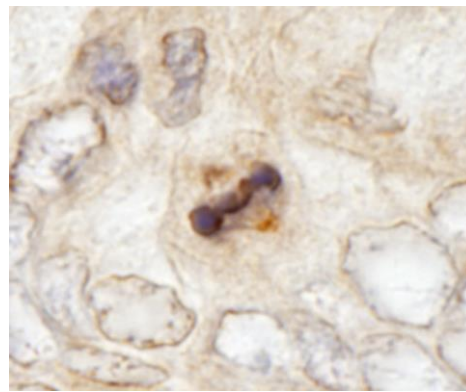
**Detection of human CENP-F/Mitotin by IHC-IF.** *Sample:* FFPE section of human ewing sarcoma. *Antibody:* Affinity purified rabbit anti-CENP-F/Mitotin (Cat. No. IHC-00315) used at a dilution of 1:100. *Detection:* Red-fluorescent goat anti-rabbit IgG highly cross-adsorbed Antibody Hilyte Plus™ 555 used at a dilution of 1:100.



**Detection of human CENP-F/Mitotin by immunohistochemistry.** *Sample:* FFPE section of human ewing sarcoma. *Antibody:* Affinity purified rabbit anti-CENP-F/Mitotin (Cat. No. IHC-00315) used at a dilution of 1:500. *Detection:* DAB



**Detection of human CENP-F/Mitotin by immunohistochemistry.** *Sample:* FFPE section of human ewing sarcoma. *Antibody:* Affinity purified rabbit anti-CENP-F/Mitotin (Cat. No. IHC-00315) used at a dilution of 1:500. *Detection:* DAB



**Detection of human CENP-F/Mitotin by immunohistochemistry.** *Sample:* FFPE section of human ewing sarcoma. *Antibody:* Affinity purified rabbit anti-CENP-F/Mitotin (Cat. No. IHC-00315) used at a dilution of 1:100. *Detection:* DAB