

AKAP8L/HA95 IHC Antibody

Rabbit Polyclonal

Antigen Affinity Purified

Protein ID NP_055186.2

Catalog No. IHC-00277

GeneID 26993

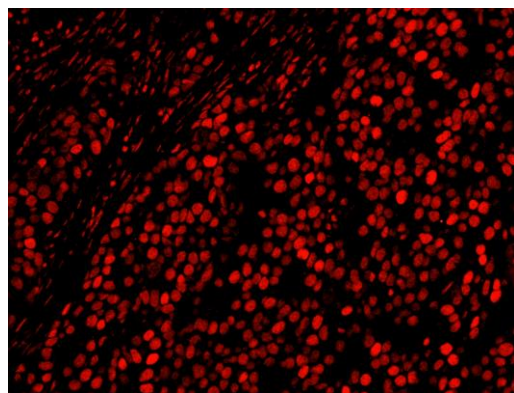
Lot No. IHC-00277-1



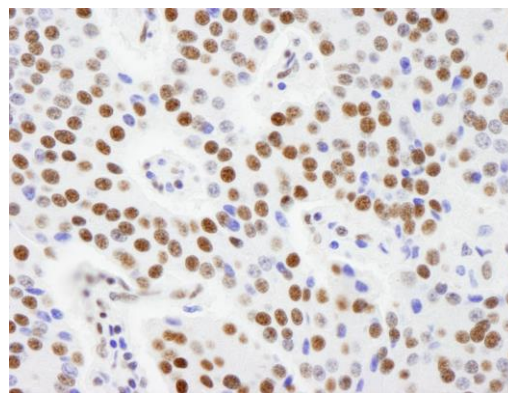
APPLICATIONS	IHC, IHC-IF
SPECIES REACTIVITY	Human
PRESUMED REACTIVITY	Based on 100% sequence identity, this antibody is predicted to react with Gorilla, Chimpanzee, Northern white-cheeked gibbon, Naked mole rat and Chinese hamster
AMOUNT	100 µl
CONCENTRATION	200 µg/ml
STORAGE/SHELF LIFE	2 – 8° C / 1 year from date of receipt
PHYSICAL STATE	Liquid
BUFFER	Tris-buffered Saline containing 0.1% BSA and 0.09% Sodium Azide
ISOTYPE	IgG
ORIGIN	USA
PRODUCTION PROCEDURES	<p>Antibody was affinity purified using an epitope specific to AKAP8L/HA95 immobilized on solid support.</p> <p>The epitope recognized by IHC-00277 maps to a region between residue 596 and 646 of human A kinase (PRKA) anchor protein 8-like (helicase A-binding protein 95 kDa) using the numbering given in entry NP_055186.2 (GeneID 26993).</p> <p>Antibody concentration was determined by extinction coefficient: absorbance at 280 nm of 1.4 equals 1.0 mg of IgG.</p>
APPLICATIONS	<p>Centrifuge tube to remove product from lid. Optimal working dilutions should be determined experimentally by the investigator. Prepare working dilution immediately before use.</p> <p>Immunohistochemistry 1:100 – 1:500</p> <p>Immunofluorescence 1:50 – 1:500 (IHC)</p>
APPLICATION NOTES	<p>Epitope exposure is recommended.</p> <p>Epitope exposure with citrate buffer will enhance staining.</p> <p>Likely to work with frozen sections.</p> <p>In some cases, the antibody may be diluted further than indicated.</p>
IHC HUMAN CONTROLS	Bladder Cell Carcinoma, Breast Carcinoma, Colon Carcinoma, Linitis Plastica Stomach Cancer, Metastatic Lymph Node, Ovarian Carcinoma, Pancreatic Islet Cell Tumor, Prostate Carcinoma, Skin Squamous Cell Carcinoma, Stomach Adenocarcinoma, Testicular Seminoma
ADDITIONAL INFO	<p>https://www.bethyl.com/product/IHC-00277</p> <p>Use the link above to view SDS, a current list of citations, and other product specific information.</p>

This document certifies that this product has met all of the quality control standards defined by Bethyl Laboratories, Inc.
Eric McIntush, PhD | Chief Scientific Officer

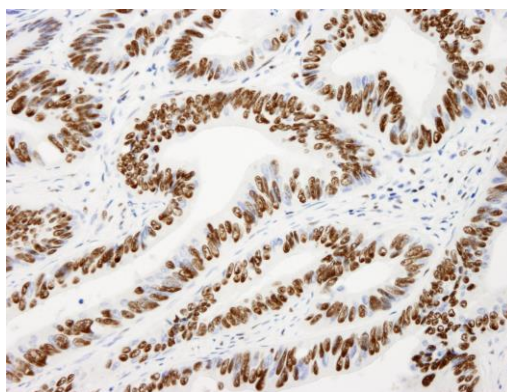
Date: June 21, 2019



Detection of human AKAP8L/HA95 by immunofluorescence. *Sample:* FFPE section of human breast carcinoma. *Antibody:* Affinity purified rabbit anti-AKAP8L/HA95 (Cat. No. IHC-00277) used at a dilution of 1:100. *Detection:* Red-fluorescent goat anti-rabbit IgG highly cross-adsorbed IHC Antibody Hilyte Plus™ 555 used at a dilution of 1:100.



Detection of human AKAP8L/HA95 by immunohistochemistry. *Sample:* FFPE section of human pancreatic islet cell tumor. *Antibody:* Affinity purified rabbit anti-AKAP8L/HA95 (Cat. No. IHC-00277) used at a dilution of 1:250. *Detection:* DAB



Detection of human AKAP8L/HA95 by immunohistochemistry. *Sample:* FFPE section of human colon carcinoma. *Antibody:* Affinity purified rabbit anti-AKAP8L/HA95 (Cat. No. IHC-00277) used at a dilution of 1:250. *Detection:* DAB