

RbBP4 IHC Antibody

Rabbit Polyclonal

Antigen Affinity Purified

Protein ID CAA52321.1

Catalog No. IHC-00242-T

GeneID 5928

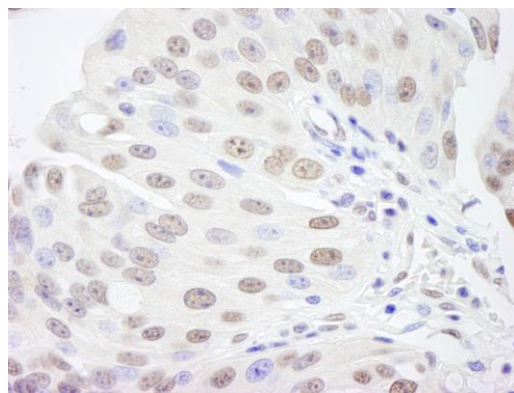
Lot No. IHC-00242-T-1



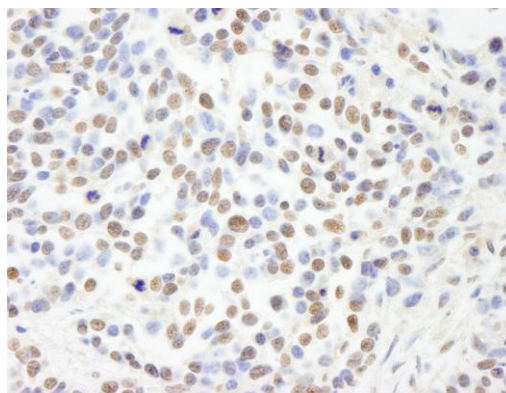
APPLICATIONS	IHC
SPECIES REACTIVITY	Human, Mouse
AMOUNT	10 µl
CONCENTRATION	100 µg/ml
STORAGE/SHELF LIFE	2 – 8° C / 1 year from date of receipt
PHYSICAL STATE	Liquid
BUFFER	Tris-buffered Saline containing 0.1% BSA and 0.09% Sodium Azide
ISOTYPE	IgG
ORIGIN	USA
PRODUCTION PROCEDURES	<p>Antibody was affinity purified using an epitope specific to RbBP4 immobilized on solid support.</p> <p>The epitope recognized by IHC-00242-T maps to a region between residue 1 and 50 of human retinoblastoma binding protein 4 (retinoblastoma-binding protein p48) using the numbering given in entry CAA52321.1 (GeneID 5928).</p> <p>Antibody concentration was determined by extinction coefficient: absorbance at 280 nm of 1.4 equals 1.0 mg of IgG.</p>
APPLICATIONS	<p>Centrifuge tube to remove product from lid. Optimal working dilutions should be determined experimentally by the investigator. Prepare working dilution immediately before use.</p> <p>Immunohistochemistry 1:100 – 1:500</p>
APPLICATION NOTES	<p>Epitope exposure is recommended.</p> <p>Epitope exposure with citrate buffer will enhance staining.</p> <p>Likely to work with frozen sections.</p> <p>In some cases, the antibody may be diluted further than indicated.</p>
IHC HUMAN CONTROLS	Anaplastic Thyroid Carcinoma, Bladder Cell Carcinoma, Breast Carcinoma, Colon Carcinoma, Ewing Sarcoma, Linitis Plastica Stomach Cancer, Metastatic Lymph Node, Non-Small Cell Lung Cancer, Ovarian Carcinoma, Pancreatic Islet Cell Tumor, Prostate Carcinoma, Skin Basal Cell Carcinoma, Skin Squamous Cell Carcinoma, Small Cell Lung Cancer, Stomach Adenocarcinoma, Testicular Seminoma
IHC MOUSE CONTROLS	Colon Carcinoma CT26, Skin, Teratoma
ADDITIONAL INFO	<p>https://www.bethyl.com/product/IHC-00242-T</p> <p>Use the link above to view SDS, a current list of citations, and other product specific information.</p>

This document certifies that this product has met all of the quality control standards defined by Bethyl Laboratories, Inc.
Eric McIntush, PhD | Chief Scientific Officer

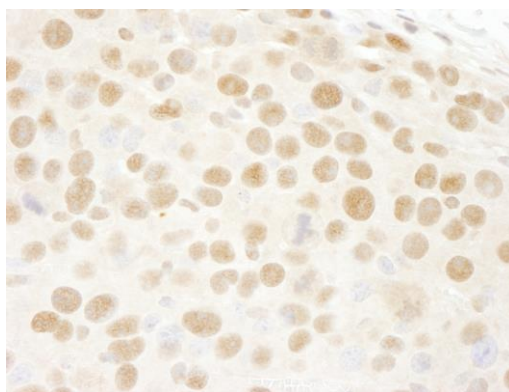
Date: June 21, 2019



Detection of human RBBP4/RbAp48 by immunohistochemistry. *Sample:* FFPE section of human bladder cell carcinoma. *Antibody:* Affinity purified rabbit anti-RBBP4/RbAp48 (Cat. No. IHC-00242-T) used at a dilution of 1:500. *Detection:* DAB



Detection of human RBBP4/RbAp48 by immunohistochemistry. *Sample:* FFPE section of human non-small cell lung cancer. *Antibody:* Affinity purified rabbit anti-RBBP4/RbAp48 (Cat. No. IHC-00242-T) used at a dilution of 1:100. *Detection:* DAB



Detection of mouse RBBP4/RbAp48 by immunohistochemistry. *Sample:* FFPE section of mouse renal cell carcinoma. *Antibody:* Affinity purified rabbit anti-RBBP4/RbAp48 (Cat. No. IHC-00242-T) used at a dilution of 1:100. *Detection:* DAB