

# TRIM33/TIF1gamma IHC Antibody

Rabbit Polyclonal

Antigen Affinity Purified

Protein ID NP\_056990.3

Catalog No. IHC-00216-T

GeneID 51592

Lot No. IHC-00216-T-1



APPLICATIONS	IHC
SPECIES REACTIVITY	Human, Mouse
AMOUNT	10 µl
CONCENTRATION	250 µg/ml
STORAGE/SHELF LIFE	2 – 8° C / 1 year from date of receipt
PHYSICAL STATE	Liquid
BUFFER	Tris-buffered Saline containing 0.1% BSA and 0.09% Sodium Azide
ISOTYPE	IgG
ORIGIN	USA
PRODUCTION PROCEDURES	Antibody was affinity purified using an epitope specific to TRIM33/TIF1gamma immobilized on solid support.

The epitope recognized by IHC-00216-T maps to a region between residue 1077 and the C-terminus (residue 1127) of human tripartite motif-containing 33 (transcriptional intermediary factor 1 gamma) using the numbering given in entry NP\_056990.3 (GeneID 51592).

Antibody concentration was determined by extinction coefficient: absorbance at 280 nm of 1.4 equals 1.0 mg of IgG.

**APPLICATIONS** Centrifuge tube to remove product from lid. Optimal working dilutions should be determined experimentally by the investigator. Prepare working dilution immediately before use.

Immunohistochemistry 1:100 – 1:500

**APPLICATION NOTES** Epitope exposure is recommended.

Epitope exposure with citrate buffer will enhance staining.

Likely to work with frozen sections.

In some cases, the antibody may be diluted further than indicated.

**IHC HUMAN CONTROLS** Breast Carcinoma, Colon Carcinoma, Prostate Carcinoma, Small Cell Lung Cancer

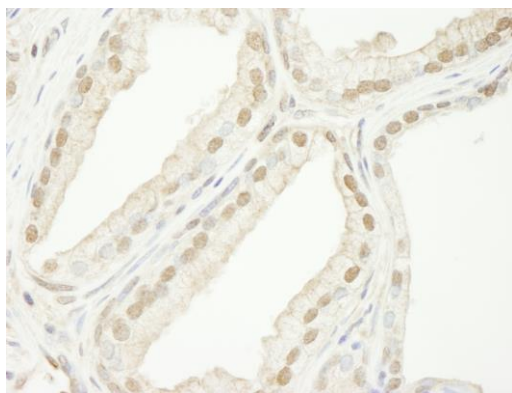
**IHC MOUSE CONTROLS** Teratoma

**ADDITIONAL INFO** <https://www.bethyl.com/product/IHC-00216-T>

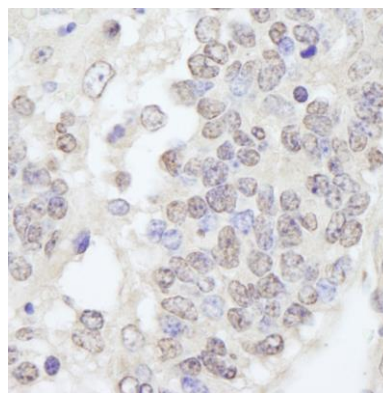
Use the link above to view SDS, a current list of citations, and other product specific information.

This document certifies that this product has met all of the quality control standards defined by Bethyl Laboratories, Inc.  
Eric McIntush, PhD | Chief Scientific Officer

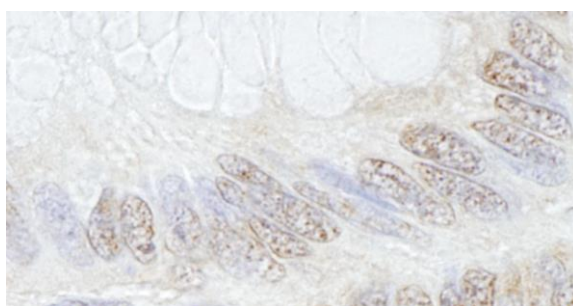
Date: June 21, 2019



**Detection of human TRIM33/TIF1gamma by immunohistochemistry.** *Sample:* FFPE section of human prostate adenocarcinoma. *Antibody:* Affinity purified rabbit anti-TRIM33/TIF1gamma (Cat. No. IHC-00216-T) used at a dilution of 1:250. *Detection:* DAB



**Detection of mouse TRIM33/TIF1gamma by immunohistochemistry.** *Sample:* FFPE section of mouse teratoma. *Antibody:* Affinity purified rabbit anti-TRIM33/TIF1gamma (Cat. No. IHC-00216-T) used at a dilution of 1:250. *Detection:* DAB



**Detection of human TRIM33/TIF1gamma by immunohistochemistry.** *Sample:* FFPE section of human colon adenocarcinoma. *Antibody:* Affinity purified rabbit anti-TRIM33/TIF1gamma (Cat. No. IHC-00216-T) used at a dilution of 1:250. *Detection:* DAB