

DHX9 IHC Antibody

Rabbit Polyclonal

Antigen Affinity Purified

Protein ID CAA71668.1

Catalog No. IHC-00159-T

GeneID 1660

Lot No. IHC-00159-T-1



APPLICATIONS	IHC
SPECIES REACTIVITY	Human, Mouse
AMOUNT	10 µl
CONCENTRATION	250 µg/ml
STORAGE/SHELF LIFE	2 – 8° C / 1 year from date of receipt
PHYSICAL STATE	Liquid
BUFFER	Tris-buffered Saline containing 0.1% BSA and 0.09% Sodium Azide
ISOTYPE	IgG
ORIGIN	USA
PRODUCTION PROCEDURES	Antibody was affinity purified using an epitope specific to DHX9 immobilized on solid support.

The epitope recognized by IHC-00159-T maps to a region between residues 1220 and the C-terminus (residue 1270) of human DEAH (Asp-Glu-Ala-His) Box Polypeptide 9 using the numbering given in entry CAA71668.1 (GeneID 1660).

APPLICATIONS Centrifuge tube to remove product from lid. Optimal working dilutions should be determined experimentally by the investigator. Prepare working dilution immediately before use.

Immunohistochemistry 1:100 – 1:500

APPLICATION NOTES Epitope exposure is recommended.

Epitope exposure with citrate buffer will enhance staining.

Likely to work with frozen sections.

In some cases, the antibody may be diluted further than indicated.

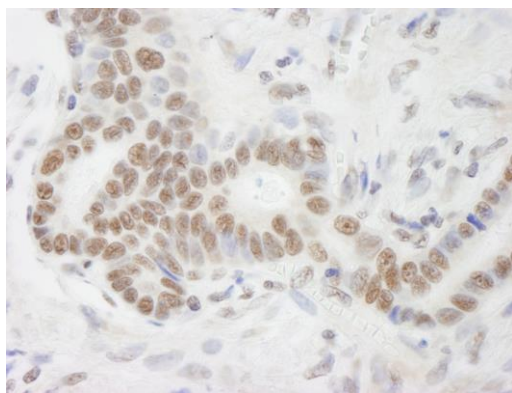
IHC HUMAN CONTROLS Breast Carcinoma, Colon Carcinoma, Laryngeal Squamous Cell Carcinoma, Linitis Plastica Stomach Cancer, Metastatic Lymph Node, Non-Small Cell Lung Cancer, Ovarian Carcinoma, Prostate Carcinoma, Skin Basal Cell Carcinoma, Small Cell Lung Cancer, Stomach Adenocarcinoma, Testicular Seminoma

IHC MOUSE CONTROLS Fibroma, Squamous Cell Carcinoma

ADDITIONAL INFO <https://www.bethyl.com/product/IHC-00159-T>

Use the link above to view SDS, a current list of citations, and other product specific information.

This document certifies that this product has met all of the quality control standards defined by Bethyl Laboratories, Inc.
Eric McIntush, PhD | Chief Scientific Officer Date: June 21, 2019

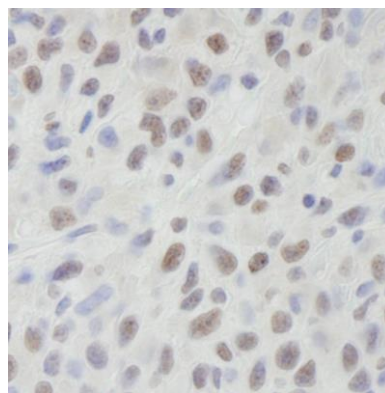


Detection of human DHX9 by immunohistochemistry.

Sample: FFPE section of human stomach adenocarcinoma.

Antibody: Affinity purified rabbit anti-DHX9 (Cat. No.

IHC-00159-T) used at a dilution of 1:250. *Detection:* DAB



Detection of mouse DHX9 by immunohistochemistry.

Sample: FFPE section of mouse squamous cell carcinoma.

Antibody: Affinity purified rabbit anti-DHX9 (Cat. No.

IHC-00159-T) used at a dilution of 1:250. *Detection:* DAB