

# TIF1 Alpha/TRIM24 IHC Antibody

Rabbit Polyclonal

Antigen Affinity Purified

Protein ID NP\_056989.2

Catalog No. IHC-00144-T

GeneID 8805

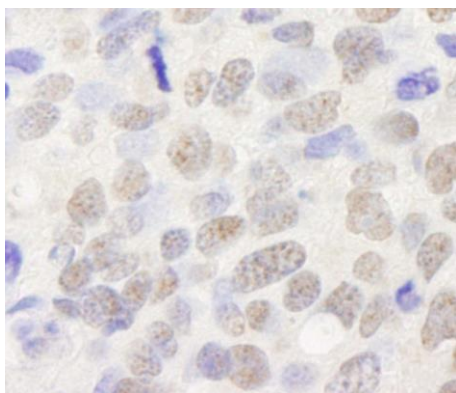
Lot No. IHC-00144-T-1



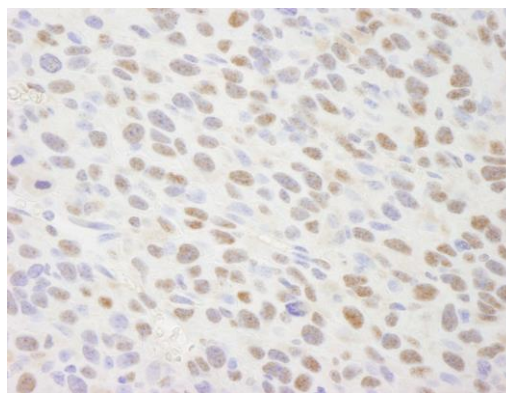
<b>APPLICATIONS</b>	IHC
<b>SPECIES REACTIVITY</b>	Human, Mouse
<b>AMOUNT</b>	10 µl
<b>CONCENTRATION</b>	100 µg/ml
<b>STORAGE/SHELF LIFE</b>	2 – 8° C / 1 year from date of receipt
<b>PHYSICAL STATE</b>	Liquid
<b>BUFFER</b>	Tris-buffered Saline containing 0.1% BSA and 0.09% Sodium Azide
<b>ISOTYPE</b>	IgG
<b>ORIGIN</b>	USA
<b>PRODUCTION PROCEDURES</b>	Antibody was affinity purified using an epitope specific to TIF1 Alpha/TRIM24 immobilized on solid support.  The epitope recognized by IHC-00144-T maps to a region between residues 700 and 750 of human Transcriptional Intermediary Factor 1 Alpha (Tripartite Motif-Containing 24 ) using the numbering given in entry NP_056989.2 (GeneID 8805).
<b>APPLICATIONS</b>	Centrifuge tube to remove product from lid. Optimal working dilutions should be determined experimentally by the investigator. Prepare working dilution immediately before use.  Immunohistochemistry 1:100 – 1:500
<b>APPLICATION NOTES</b>	Epitope exposure is recommended.  Epitope exposure with citrate buffer will enhance staining.  Likely to work with frozen sections.
<b>IHC HUMAN CONTROLS</b>	In some cases, the antibody may be diluted further than indicated. Breast Carcinoma, Metastatic Lymph Node, Ovarian Carcinoma, Prostate Carcinoma, Testicular Seminoma
<b>IHC MOUSE CONTROLS</b>	Squamous Cell Carcinoma
<b>ADDITIONAL INFO</b>	<a href="https://www.bethyl.com/product/IHC-00144-T">https://www.bethyl.com/product/IHC-00144-T</a> Use the link above to view SDS, a current list of citations, and other product specific information.

This document certifies that this product has met all of the quality control standards defined by Bethyl Laboratories, Inc.  
Eric McIntush, PhD | Chief Scientific Officer

Date: June 21, 2019



**Detection of human TIF1 Alpha / TRIM24 by immunohistochemistry.** *Sample:* FFPE section of human breast tumor. *Antibody:* Affinity purified rabbit anti-TIF1 Alpha/TRIM24 (Cat. No. IHC-00144-T) used at a dilution of 1:250. *Detection:* DAB



**Detection of mouse TIF1 Alpha / TRIM24 by immunohistochemistry.** *Sample:* FFPE section of mouse squamous cell carcinoma. *Antibody:* Affinity purified rabbit anti-TIF1 Alpha/TRIM24 (Cat. No. IHC-00144-T) used at a dilution of 1:250. *Detection:* DAB