

CSN1 IHC Antibody

Rabbit Polyclonal

Antigen Affinity Purified

Protein ID Q13098

Catalog No. IHC-00113

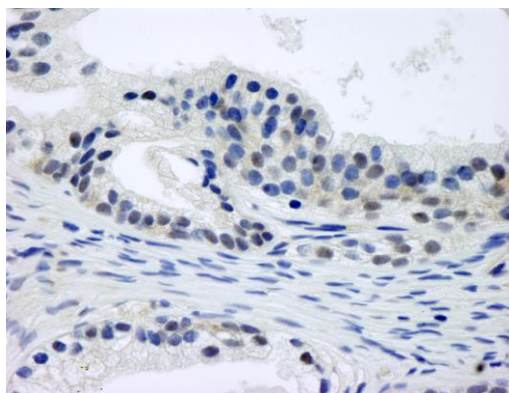
GeneID 2873

Lot No. IHC-00113-1



APPLICATIONS	IHC
SPECIES REACTIVITY	Human
PRESUMED REACTIVITY	Based on 100% sequence identity, this antibody is predicted to react with Mouse, Rat, Chicken, Turkey, Bovine, Dog, Horse, Guinea pig_10141, Panda, Orangutan, Monkey, Gorilla and Chimpanzee
AMOUNT	100 µl
CONCENTRATION	250 µg/ml
STORAGE/SHELF LIFE	2 - 8° C / 1 year from date of receipt
PHYSICAL STATE	Liquid
BUFFER	Tris-buffered Saline containing 0.1% BSA and 0.09% Sodium Azide
ISOTYPE	IgG
ORIGIN	USA
PRODUCTION PROCEDURES	Antibody was affinity purified using an epitope specific to CSN1 immobilized on solid support. The epitope recognized by IHC-00113 maps to a region between residues 400 and the C-terminus (residue 471) of human G protein Pathway Suppressor 1 using the numbering given in Swiss-Prot entry Q13098 (GeneID 2873).
APPLICATIONS	Centrifuge tube to remove product from lid. Optimal working dilutions should be determined experimentally by the investigator. Prepare working dilution immediately before use. Immunohistochemistry 1:100 - 1:500
APPLICATION NOTES	Epitope exposure is recommended. Epitope exposure with citrate buffer will enhance staining. Likely to work with frozen sections.
IHC HUMAN CONTROLS	In some cases, the antibody may be diluted further than indicated. Laryngeal Squamous Cell Carcinoma, Linitis Plastica Stomach Cancer, Pancreatic Islet Cell Tumor, Prostate Carcinoma
ADDITIONAL INFO	https://www.bethyl.com/product/IHC-00113 Use the link above to view SDS, a current list of citations, and other product specific information.

This document certifies that this product has met all of the quality control standards defined by Bethyl Laboratories, Inc.
Eric McIntush, PhD | Chief Scientific Officer Date: June 21, 2019

**Detection of human CSN1 by immunohistochemistry.**

Sample: FFPE section of human prostate–nodular hypertrophy. *Antibody:* Affinity purified rabbit anti–CSN1 (Cat. No. IHC–00113) used at a dilution of 1:250.

Detection: DAB