

CSN3 IHC Antibody

Rabbit Polyclonal

Antigen Affinity Purified

Protein ID NP_003644.2

Catalog No. IHC-00111-T

GeneID 8533

Lot No. IHC-00111-T-1



APPLICATIONS	IHC
SPECIES REACTIVITY	Human
AMOUNT	10 µl
CONCENTRATION	250 µg/ml
STORAGE/SHELF LIFE	2 – 8° C / 1 year from date of receipt
PHYSICAL STATE	Liquid
BUFFER	Tris-buffered Saline containing 0.1% BSA and 0.09% Sodium Azide
ISOTYPE	IgG
ORIGIN	USA
PRODUCTION PROCEDURES	Antibody was affinity purified using an epitope specific to CSN3 immobilized on solid support.

The epitope recognized by IHC-00111-T maps to a region between residues 325 and 375 of human COP9 constitutive photomorphogenic homolog subunit 3 using the numbering given in entry NP_003644.2 (GeneID 8533).

APPLICATIONS Centrifuge tube to remove product from lid. Optimal working dilutions should be determined experimentally by the investigator. Prepare working dilution immediately before use.

Immunohistochemistry 1:100 – 1:500

APPLICATION NOTES Epitope exposure is recommended.

Epitope exposure with citrate buffer will enhance staining.

Likely to work with frozen sections.

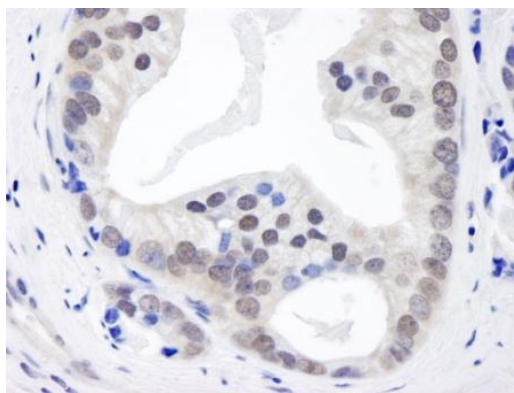
In some cases, the antibody may be diluted further than indicated.

IHC HUMAN CONTROLS Breast Carcinoma, Laryngeal Squamous Cell Carcinoma, Linitis Plastica Stomach Cancer, Metastatic Lymph Node, Non-Small Cell Lung Cancer, Ovarian Carcinoma, Pancreatic Islet Cell Tumor, Prostate Carcinoma, Skin Basal Cell Carcinoma, Small Cell Lung Cancer, Stomach Adenocarcinoma

ADDITIONAL INFO <https://www.bethyl.com/product/IHC-00111-T>

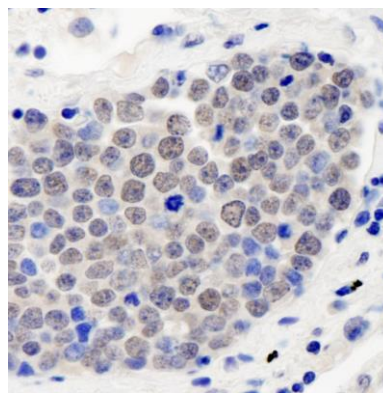
Use the link above to view SDS, a current list of citations, and other product specific information.

This document certifies that this product has met all of the quality control standards defined by Bethyl Laboratories, Inc.
Eric McIntush, PhD | Chief Scientific Officer Date: June 21, 2019

**Detection of human CSN3 by immunohistochemistry.**

Sample: FFPE section of human prostate adenocarcinoma.

Antibody: Affinity purified rabbit anti-CSN3 (Cat. No. IHC-00111-T) used at a dilution of 1:250. *Detection:* DAB

**Detection of human CSN3 by immunohistochemistry.**

Sample: FFPE section of human small cell lung cancer.

Antibody: Affinity purified rabbit anti-CSN3 (Cat. No. IHC-00111-T) used at a dilution of 1:250. *Detection:* DAB