

# ZWINT-1 IHC Antibody

Rabbit Polyclonal

Antigen Affinity Purified

Protein ID NP\_008988.2

Catalog No. IHC-00095

GeneID 11130

Lot No. IHC-00095-1



<b>APPLICATIONS</b>	IHC, ICC-IF
<b>SPECIES REACTIVITY</b>	Human
<b>AMOUNT</b>	100 µl
<b>CONCENTRATION</b>	250 µg/ml
<b>STORAGE/SHELF LIFE</b>	2 – 8° C / 1 year from date of receipt
<b>PHYSICAL STATE</b>	Liquid
<b>BUFFER</b>	Tris-buffered Saline containing 0.1% BSA and 0.09% Sodium Azide
<b>ISOTYPE</b>	IgG
<b>ORIGIN</b>	USA
<b>PRODUCTION PROCEDURES</b>	Antibody was affinity purified using an epitope specific to ZWINT-1 immobilized on solid support.

The epitope recognized by IHC-00095 maps to a region between residue 225 and the C-terminus (residue 277) of human ZW10 Interactor-1 using the numbering given in entry NP\_008988.2 (GeneID 11130).

**APPLICATIONS** Centrifuge tube to remove product from lid. Optimal working dilutions should be determined experimentally by the investigator. Prepare working dilution immediately before use.

Immunohistochemistry 1:100 – 1:500

Immunofluorescence 1:100 – 1:500  
(ICC)

**APPLICATION NOTES** Formalin-Fixed Paraffin-Embedded Tissue 1:100 – 1:500:  
Epitope exposure is recommended.  
Epitope exposure with citrate buffer will enhance staining.

Formaldehyde-Fixed Cells 1:100 – 1:500:  
Permeabilization with Triton-X 100 is recommended.  
Acetone fixation is not recommended.

Likely to work with frozen sections.

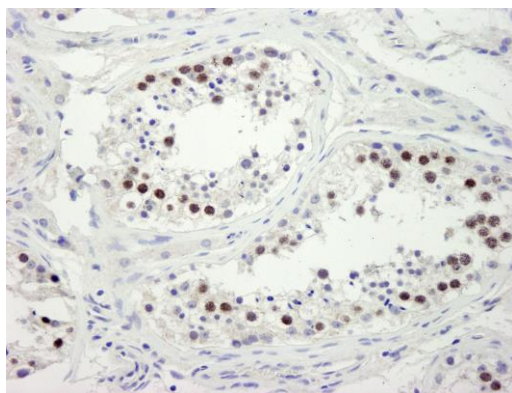
In some cases, the antibody may be diluted further than indicated.

**IHC HUMAN CONTROLS** Testicular Seminoma

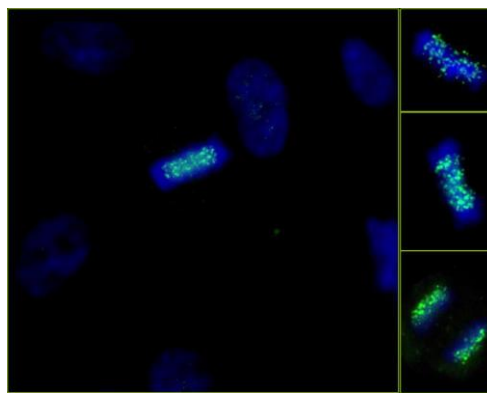
**ADDITIONAL INFO** <https://www.bethyl.com/product/IHC-00095>

Use the link above to view SDS, a current list of citations, and other product specific information.

This document certifies that this product has met all of the quality control standards defined by Bethyl Laboratories, Inc.  
Eric McIntush, PhD | Chief Scientific Officer Date: June 21, 2019



**Detection of human ZWINT-1 by immunohistochemistry.**  
*Sample:* FFPE section of human testis. *Antibody:* Affinity purified rabbit anti-ZWINT-1 (Cat. No. IHC-00095) used at a dilution of 1:250. *Detection:* DAB staining using anti-rabbit IHC antibody (Cat. No. A120-501P) at a dilution of 1:100.



**Detection of human ZWINT-1 by immunocytochemistry.**  
*Samples:* NBF-fixed asynchronous HeLa cells. *Antibody:* Affinity purified rabbit anti-ZWINT-1 (Cat. No. IHC-00095) used at a dilution of 1:250. *Detection:* Anti-rabbit IgG-FITC conjugated (Cat. No. A120-101F) used at a dilution of 1:100.