

# Phospho MCM2 (S40/S41) IHC Antibody

Rabbit Polyclonal

Antigen Affinity Purified

Protein ID NP\_004517.2

Catalog No. IHC-00079-T

GeneID 4171

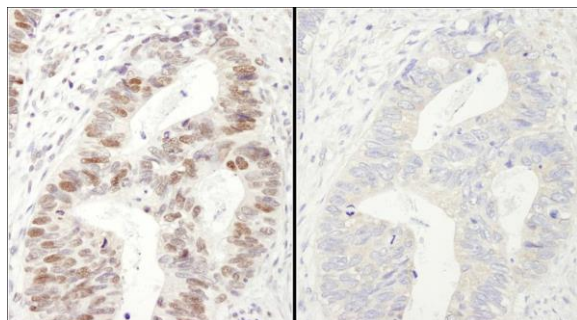
Lot No. IHC-00079-T-2



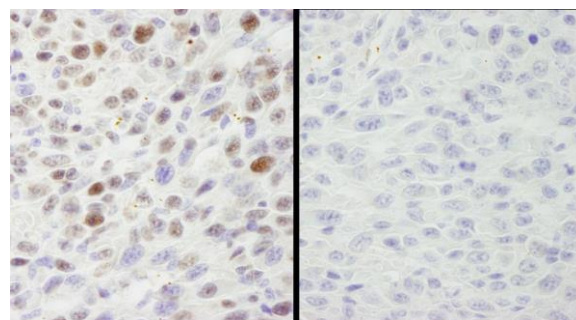
<b>APPLICATIONS</b>	IHC
<b>SPECIES REACTIVITY</b>	Human, Mouse
<b>AMOUNT</b>	10 µl
<b>CONCENTRATION</b>	200 µg/ml
<b>STORAGE/SHELF LIFE</b>	2 – 8° C / 1 year from date of receipt
<b>PHYSICAL STATE</b>	Liquid
<b>BUFFER</b>	Tris-buffered Saline containing 0.1% BSA and 0.09% Sodium Azide
<b>ISOTYPE</b>	IgG
<b>ORIGIN</b>	USA
<b>PRODUCTION PROCEDURES</b>	Antibody was affinity purified using an epitope specific to Phospho MCM2 (S40/S41) immobilized on solid support. Immunogen was a synthetic di-phosphorylated peptide, which represented a portion of human minichromosomal maintenance deficient 2 surrounding Serines 40 and 41 according to the numbering given in entry NP_004517.2 (GeneID 4171).
<b>APPLICATIONS</b>	Centrifuge tube to remove product from lid. Optimal working dilutions should be determined experimentally by the investigator. Prepare working dilution immediately before use.  Immunohistochemistry 1:100 – 1:500
<b>APPLICATION NOTES</b>	Epitope exposure is recommended.  Epitope exposure with citrate buffer will enhance staining.  Likely to work with frozen sections.
<b>IHC HUMAN CONTROLS</b>	In some cases, the antibody may be diluted further than indicated. Breast Carcinoma, Colon Carcinoma, Laryngeal Squamous Cell Carcinoma, Linitis Plastica Stomach Cancer, Ovarian Carcinoma, Skin Basal Cell Carcinoma, Skin Squamous Cell Carcinoma, Stomach Adenocarcinoma
<b>IHC MOUSE CONTROLS</b>	Squamous Cell Carcinoma
<b>ADDITIONAL INFO</b>	<a href="https://www.bethyl.com/product/IHC-00079-T">https://www.bethyl.com/product/IHC-00079-T</a> Use the link above to view SDS, a current list of citations, and other product specific information.

This document certifies that this product has met all of the quality control standards defined by Bethyl Laboratories, Inc.  
Eric McIntush, PhD | Chief Scientific Officer

Date: June 21, 2019



**Detection of human Phospho MCM2 (S40/S41) by immunohistochemistry.** *Samples:* FFPE serial sections of human colon adenocarcinoma. Mock phosphatase treated section (left) or calf intestinal phosphatase-treated section (right) immunostained for Phospho MCM2 (S40/S41). *Antibody:* Affinity purified rabbit anti-Phospho MCM2 (S40/S41) (Cat. No. IHC-00079-T) used at a dilution of 1:250. *Detection:* DAB staining using anti-rabbit IHC antibody (Cat. No. A120-501P) at a dilution of 1:100.



**Detection of mouse Phospho MCM2 (S40/S41) by immunohistochemistry.** *Samples:* FFPE serial sections of mouse squamous cell carcinoma. Mock phosphatase treated section (left) or calf intestinal phosphatase-treated section (right) immunostained for Phospho MCM2 (S40/S41). *Antibody:* Affinity purified rabbit anti-Phospho MCM2 (S40/S41) (Cat. No. IHC-00079-T) used at a dilution of 1:250. *Detection:* DAB