

Phospho MCM2 (S53) IHC Antibody

Rabbit Polyclonal

Antigen Affinity Purified

Protein ID NP_004517.2

Catalog No. IHC-00069-T

GeneID 4171

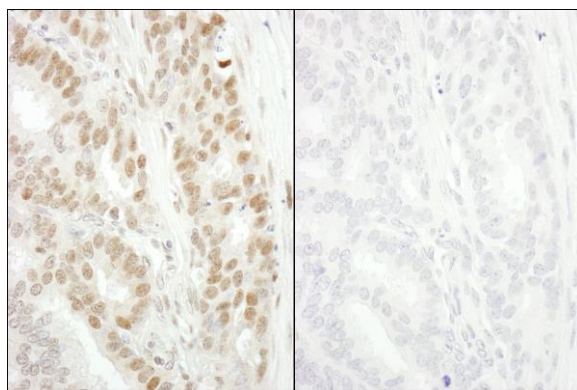
Lot No. IHC-00069-T-3



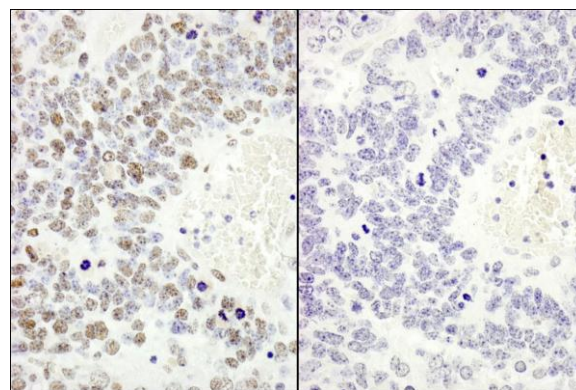
APPLICATIONS	IHC
SPECIES REACTIVITY	Human, Mouse
AMOUNT	10 µl
CONCENTRATION	250 µg/ml
STORAGE/SHELF LIFE	2 – 8° C / 1 year from date of receipt
PHYSICAL STATE	Liquid
BUFFER	Tris-buffered Saline containing 0.1% BSA and 0.09% Sodium Azide
ISOTYPE	IgG
ORIGIN	USA
PRODUCTION PROCEDURES	Antibody was affinity purified using an epitope specific to Phospho-MCM2 (S53) immobilized on solid support. Immunogen for IHC-00069-T was a synthetic phosphorylated peptide, which represented a portion of human Minichromosomal Maintenance Deficient 2 surrounding Serine 53 according to the numbering given in entry NP_004517.2 (GeneID 4171).
APPLICATIONS	Centrifuge tube to remove product from lid. Optimal working dilutions should be determined experimentally by the investigator. Prepare working dilution immediately before use. Immunohistochemistry 1:100 – 1:500
APPLICATION NOTES	TBS buffer is recommended. Epitope exposure is recommended. Epitope exposure with citrate or tris-EDTA pH9.0 buffer will enhance staining. Likely to work with frozen sections. In some cases, the antibody may be diluted further than indicated.
IHC HUMAN CONTROLS	Breast Carcinoma, Colon Carcinoma, Ovarian Carcinoma, Stomach Adenocarcinoma, Testicular Seminoma
IHC MOUSE CONTROLS	Renal Cell Carcinoma, Squamous Cell Carcinoma
ADDITIONAL INFO	https://www.bethyl.com/product/IHC-00069-T Use the link above to view SDS, a current list of citations, and other product specific information.

This document certifies that this product has met all of the quality control standards defined by Bethyl Laboratories, Inc.
Eric McIntush, PhD | Chief Scientific Officer

Date: June 21, 2019



Detection of human Phospho-MCM2 (S53) by immunohistochemistry. *Samples:* FFPE serial sections of human breast adenocarcinoma. Mock phosphatase treated section (left) or calf intestinal phosphatase treated section (right) immunostained for Phospho-MCM2 (S53). *Antibody:* Affinity purified rabbit anti-Phospho-MCM2 (S53) (Cat. No. IHC-00069-T Lot3) used at a dilution of 1:250. *Detection:* DAB



Detection of mouse Phospho-MCM2 (S53) by immunohistochemistry. *Samples:* FFPE serial sections of mouse teratoma. Mock phosphatase treated section (left) or calf intestinal phosphatase treated section (right) immunostained for Phospho-MCM2 (S53). *Antibody:* Affinity purified rabbit anti-Phospho-MCM2 (S53) (Cat. No. IHC-00069-T Lot3) used at a dilution of 1:250. *Detection:* DAB