

# Phospho MCM2 (S53) IHC Antibody

Rabbit Polyclonal

Antigen Affinity Purified

Protein ID NP\_004517.2

Catalog No. IHC-00069

GeneID 4171

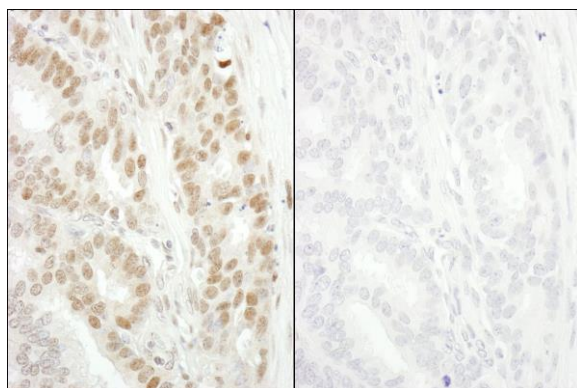
Lot No. IHC-00069-3



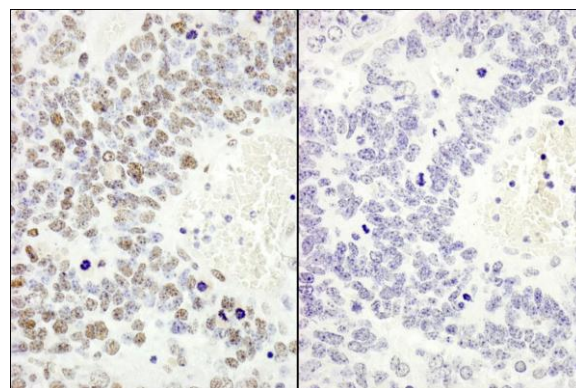
<b>APPLICATIONS</b>	IHC
<b>SPECIES REACTIVITY</b>	Human, Mouse
<b>PRESUMED REACTIVITY</b>	Based on 100% sequence identity, this antibody is predicted to react with Rat, Zebrafish, Chicken, Turkey, Bovine, Dog, Horse, Rabbit, Guinea pig_10141, Pig, Panda, Orangutan, Monkey and Gorilla
<b>AMOUNT</b>	100 µl
<b>CONCENTRATION</b>	250 µg/ml
<b>STORAGE/SHELF LIFE</b>	2 – 8° C / 1 year from date of receipt
<b>PHYSICAL STATE</b>	Liquid
<b>BUFFER</b>	Tris-buffered Saline containing 0.1% BSA and 0.09% Sodium Azide
<b>ISOTYPE</b>	IgG
<b>ORIGIN</b>	USA
<b>PRODUCTION PROCEDURES</b>	Antibody was affinity purified using an epitope specific to Phospho-MCM2 (S53) immobilized on solid support.  Immunogen for IHC-00069 was a synthetic phosphorylated peptide, which represented a portion of human Minichromosomal Maintenance Deficient 2 surrounding Serine 53 according to the numbering given in entry NP_004517.2 (GeneID 4171).
<b>APPLICATIONS</b>	Centrifuge tube to remove product from lid. Optimal working dilutions should be determined experimentally by the investigator. Prepare working dilution immediately before use.  Immunohistochemistry 1:100 – 1:500
<b>APPLICATION NOTES</b>	TBS buffer is recommended.  Epitope exposure is recommended.  Epitope exposure with citrate or tris-EDTA pH9.0 buffer will enhance staining.  Likely to work with frozen sections.
<b>IHC HUMAN CONTROLS</b>	In some cases, the antibody may be diluted further than indicated. Breast Carcinoma, Colon Carcinoma, Ovarian Carcinoma, Stomach Adenocarcinoma, Testicular Seminoma
<b>IHC MOUSE CONTROLS</b>	Renal Cell Carcinoma, Squamous Cell Carcinoma
<b>ADDITIONAL INFO</b>	<a href="https://www.bethyl.com/product/IHC-00069">https://www.bethyl.com/product/IHC-00069</a> Use the link above to view SDS, a current list of citations, and other product specific information.

This document certifies that this product has met all of the quality control standards defined by Bethyl Laboratories, Inc.  
Eric McIntush, PhD | Chief Scientific Officer

Date: June 21, 2019



**Detection of human Phospho-MCM2 (S53) by immunohistochemistry.** *Samples:* FFPE serial sections of human breast adenocarcinoma. Mock phosphatase treated section (left) or calf intestinal phosphatase treated section (right) immunostained for Phospho-MCM2 (S53). *Antibody:* Affinity purified rabbit anti-Phospho-MCM2 (S53) (Cat. No. IHC-00069 Lot3) used at a dilution of 1:250. *Detection:* DAB



**Detection of mouse Phospho-MCM2 (S53) by immunohistochemistry.** *Samples:* FFPE serial sections of mouse teratoma. Mock phosphatase treated section (left) or calf intestinal phosphatase treated section (right) immunostained for Phospho-MCM2 (S53). *Antibody:* Affinity purified rabbit anti-Phospho-MCM2 (S53) (Cat. No. IHC-00069 Lot3) used at a dilution of 1:250. *Detection:* DAB