

CKII alpha IHC Antibody

Rabbit Polyclonal

Antigen Affinity Purified

Protein ID NP_001886.1

Catalog No. IHC-00036-T

GeneID 1457

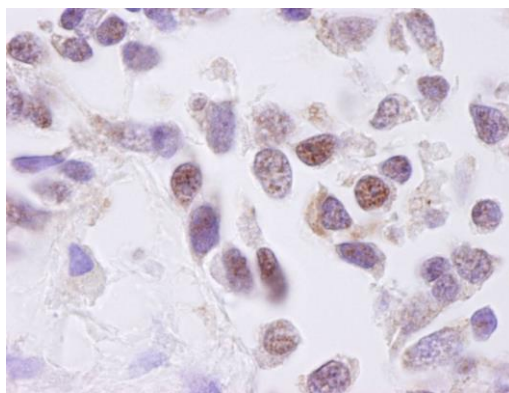
Lot No. IHC-00036-T-1



APPLICATIONS	IHC
SPECIES REACTIVITY	Human
AMOUNT	10 µl
CONCENTRATION	500 µg/ml
STORAGE/SHELF LIFE	2 – 8° C / 1 year from date of receipt
PHYSICAL STATE	Liquid
BUFFER	Tris-buffered Saline containing 0.1% BSA and 0.09% Sodium Azide
ISOTYPE	IgG
ORIGIN	USA
PRODUCTION PROCEDURES	Antibody was affinity purified using an epitope specific to CKII alpha immobilized on solid support. The epitope recognized by IHC-00036-T maps to a region between residue 300 and 350 of human Casein Kinase 2, alpha 1 using the numbering given in entry NP_001886.1 (GeneID 1457).
APPLICATIONS	Centrifuge tube to remove product from lid. Optimal working dilutions should be determined experimentally by the investigator. Prepare working dilution immediately before use. Immunohistochemistry 1:100 – 1:500
APPLICATION NOTES	Epitope exposure is recommended. Epitope exposure with citrate buffer will enhance staining. Likely to work with frozen sections.
IHC HUMAN CONTROLS	In some cases, the antibody may be diluted further than indicated. Non-Small Cell Lung Cancer
ADDITIONAL INFO	https://www.bethyl.com/product/IHC-00036-T Use the link above to view SDS, a current list of citations, and other product specific information.

This document certifies that this product has met all of the quality control standards defined by Bethyl Laboratories, Inc.
Eric McIntush, PhD | Chief Scientific Officer

Date: June 21, 2019

**Detection of human CKII alpha by immunohistochemistry.**

Sample: FFPE section of human lung non-small cell carcinoma. *Antibody:* Affinity purified rabbit anti-CKII alpha (Cat. No. IHC-00036-T) used at a dilution of 1:250.

Detection: DAB