

# USP7 IHC Antibody

Rabbit Polyclonal

Antigen Affinity Purified

Protein ID NP\_003461.1

Catalog No. IHC-00018-T

GeneID 7874

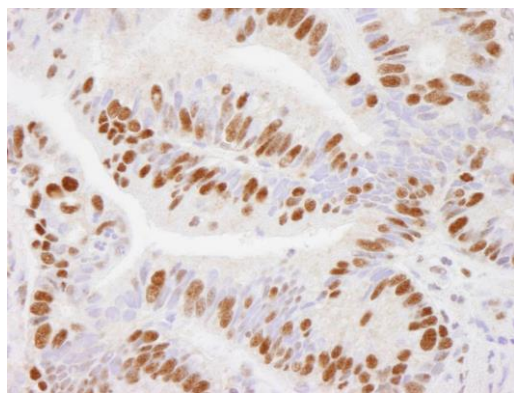
Lot No. IHC-00018-T-1



<b>APPLICATIONS</b>	IHC, IHC-IF
<b>SPECIES REACTIVITY</b>	Human, Mouse
<b>AMOUNT</b>	10 µl
<b>CONCENTRATION</b>	100 µg/ml
<b>STORAGE/SHELF LIFE</b>	2 – 8° C / 1 year from date of receipt
<b>PHYSICAL STATE</b>	Liquid
<b>BUFFER</b>	Tris-buffered Saline containing 0.1% BSA and 0.09% Sodium Azide
<b>ISOTYPE</b>	IgG
<b>ORIGIN</b>	USA
<b>PRODUCTION PROCEDURES</b>	Antibody was affinity purified using an epitope specific to USP7 immobilized on solid support.  The epitope recognized by IHC-00018-T maps to a region between residue 1 and 50 of human Ubiquitin Specific Peptidase 7 using the numbering given in entry NP_003461.1 (GeneID 7874).
<b>APPLICATIONS</b>	Centrifuge tube to remove product from lid. Optimal working dilutions should be determined experimentally by the investigator. Prepare working dilution immediately before use.  Immunohistochemistry 1:100 – 1:500  Immunofluorescence 1:50 – 1:500 (IHC)
<b>APPLICATION NOTES</b>	Epitope exposure is NOT recommended.  Epitope exposure with citrate buffer will hinder staining.  Likely to work with frozen sections.  In some cases, the antibody may be diluted further than indicated.
<b>IHC HUMAN CONTROLS</b>	Breast Carcinoma, Colon Carcinoma, Hodgkins Lymphoma, Laryngeal Squamous Cell Carcinoma, Prostate Carcinoma, Stomach Adenocarcinoma, Testicular Seminoma
<b>IHC MOUSE CONTROLS</b>	Large Intestine, Skin, Squamous Cell Carcinoma, Stomach, Testis
<b>ADDITIONAL INFO</b>	<a href="https://www.bethyl.com/product/IHC-00018-T">https://www.bethyl.com/product/IHC-00018-T</a> Use the link above to view SDS, a current list of citations, and other product specific information.

This document certifies that this product has met all of the quality control standards defined by Bethyl Laboratories, Inc.  
Eric McIntush, PhD | Chief Scientific Officer

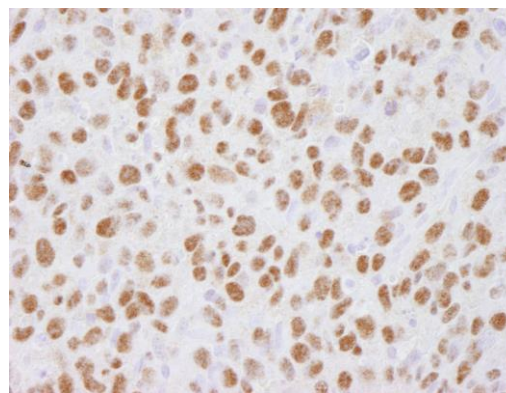
Date: June 21, 2019



**Detection of human USP7 by immunohistochemistry.**

*Sample:* FFPE section of human stomach adenocarcinoma.

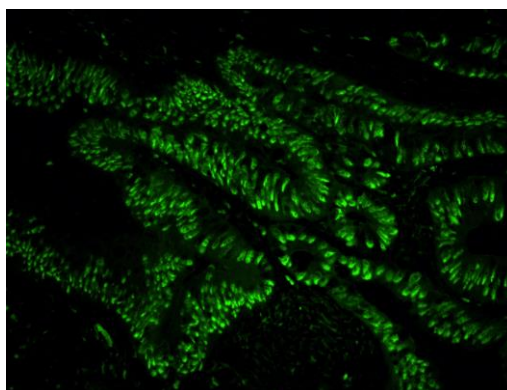
*Antibody:* Affinity purified rabbit anti-USP7 (Cat. No. IHC-00018-T) used at a dilution of 1:500. *Detection:* DAB



**Detection of mouse USP7 by immunohistochemistry.**

*Sample:* FFPE section of mouse squamous cell carcinoma.

*Antibody:* Affinity purified rabbit anti-USP7 (Cat. No. IHC-00018-T) used at a dilution of 1:100. *Detection:* DAB



**Detection of human USP7 by immunohistochemistry.**

*Sample:* FFPE section of human colon adenocarcinoma.

*Antibody:* Affinity purified rabbit anti-USP7 (Cat. No. IHC-00018-T) used at a dilution of 1:100. *Detection:* Green-fluorescent Anti-rabbit IgG FITC conjugated (Cat. No. A120-501F) used at a dilution of 1:100.