

# Phospho MCM2 (S41) IHC Antibody

Rabbit Polyclonal

Antigen Affinity Purified

Protein ID NP\_004517.2

Catalog No. IHC-00015-T

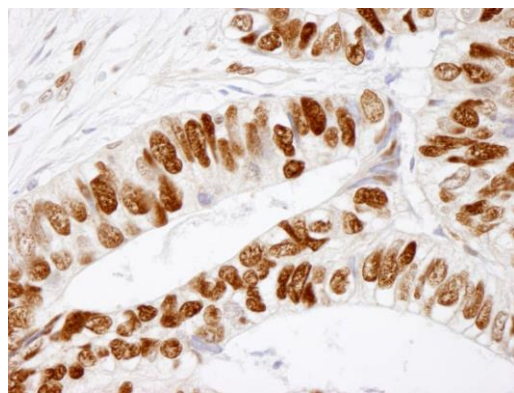
GeneID 4171

Lot No. IHC-00015-T-1

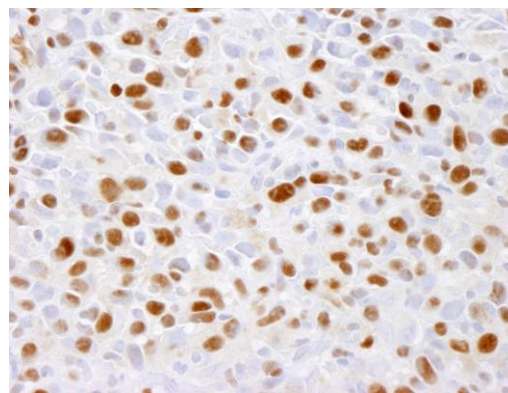


<b>APPLICATIONS</b>	IHC
<b>SPECIES REACTIVITY</b>	Human, Mouse
<b>AMOUNT</b>	10 µl
<b>CONCENTRATION</b>	100 µg/ml
<b>STORAGE/SHELF LIFE</b>	2 – 8° C / 1 year from date of receipt
<b>PHYSICAL STATE</b>	Liquid
<b>BUFFER</b>	Tris-buffered Saline containing 0.1% BSA and 0.09% Sodium Azide
<b>ISOTYPE</b>	IgG
<b>ORIGIN</b>	USA
<b>PRODUCTION PROCEDURES</b>	Antibody was affinity purified using an epitope specific to Phospho-MCM2 (Ser 41) immobilized on solid support. Immunogen for IHC-00015-T was a synthetic phosphorylated peptide, which represented a portion of human Minichromosomal Maintenance Deficient 2 surrounding Serine 41 according to the numbering given in entry NP_0045117.2 (GeneID 4171).
<b>APPLICATIONS</b>	Centrifuge tube to remove product from lid. Optimal working dilutions should be determined experimentally by the investigator. Prepare working dilution immediately before use.  Immunohistochemistry 1:100 – 1:500
<b>APPLICATION NOTES</b>	Epitope exposure is recommended.  Epitope exposure with citrate buffer will enhance staining.  Likely to work with frozen sections.
<b>IHC HUMAN CONTROLS</b>	In some cases, the antibody may be diluted further than indicated. Breast Carcinoma, Colon Carcinoma, Laryngeal Squamous Cell Carcinoma, Skin, Small Cell Lung Cancer
<b>IHC MOUSE CONTROLS</b>	Squamous Cell Carcinoma
<b>ADDITIONAL INFO</b>	<a href="https://www.bethyl.com/product/IHC-00015-T">https://www.bethyl.com/product/IHC-00015-T</a> Use the link above to view SDS, a current list of citations, and other product specific information.

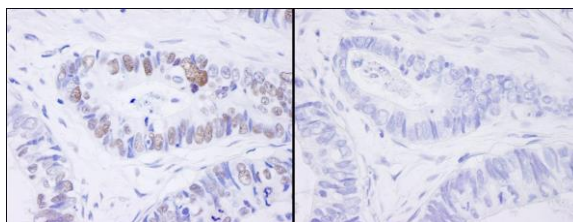
This document certifies that this product has met all of the quality control standards defined by Bethyl Laboratories, Inc.  
Eric McIntush, PhD | Chief Scientific Officer Date: June 21, 2019



**Detection of human phospho-MCM2 (Ser 41) by immunohistochemistry.** *Sample:* FFPE section of human colon adenocarcinoma. *Antibody:* Affinity purified rabbit anti-Phospho-MCM2 (Ser 41) (Cat. No. IHC-00015-T) used at a dilution of 1:100. *Detection:* DAB



**Detection of mouse phospho-MCM2 (Ser 41) by immunohistochemistry.** *Sample:* FFPE section of mouse squamous cell carcinoma. *Antibody:* Affinity purified rabbit anti-Phospho-MCM2 (Ser 41) (Cat. No. IHC-00015-T) used at a dilution of 1:100. *Detection:* DAB



**Detection of human Phospho MCM2 (Ser 41) by immunohistochemistry.** *Samples:* FFPE serial sections of human colon carcinoma. Mock phosphatase treated section (left) or CIP phosphatase-treated section (right). *Antibody:* Affinity purified rabbit anti-Phospho MCM2 (Ser 41) (Cat. No. IHC-00015) used at a dilution of 1:250. *Detection:* DAB