

BETHYL | **FORTIS**
LABORATORIES, INC. | LIFE SCIENCES

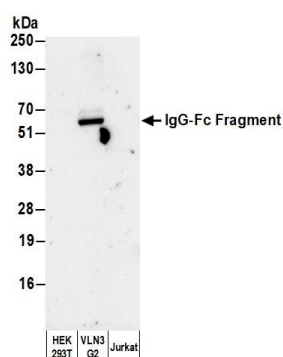
Conjugate HRP

Catalog No. A80-304P

Lot No. 21

APPLICATIONS	WB, IHC, ICC, ELISA								
SPECIES REACTIVITY	Human. Minimum reactivity to bovine, chicken, horse, mouse, rabbit, rat and sheep								
AMOUNT	1 ml								
CONCENTRATION	0.5 mg/ml								
STORAGE/SHELF LIFE	2 – 8°C / 1 year from date of receipt								
PHYSICAL STATE	Liquid								
BUFFER	Phosphate Buffered Saline (PBS) containing 0.2% BSA and 0.05% Pro-Clean 400								
ISOTYPE	IgG								
ORIGIN	USA								
PRODUCTION PROCEDURES	<p>Antiserum was solid phase adsorbed to ensure class specificity. Antiserum was cross adsorbed using bovine, chicken, horse, mouse, rabbit, rat and sheep immunosorbents to remove cross reactive antibodies. The antibody to human IgG was isolated by affinity chromatography using antigen coupled to agarose beads and conjugated to horseradish peroxidase (HRP).</p> <p>Immunoglobulin concentration was determined using Beer's Law where 1 mg/mL IgG has an A280 of 1.4.</p> <p>By immunoelectrophoresis and ELISA this antibody reacts specifically with human IgG. Cross reactivity with IgA and IgM is negligible. No antibody was detected against non-immunoglobulin serum proteins. Less than 1% cross reactivity to bovine, chicken, horse, mouse, rabbit, rat and sheep IgG was detected. This antibody may cross react with IgG from other species.</p>								
APPLICATIONS	<p>Centrifuge tube to remove product from lid. Optimal working dilutions should be determined experimentally by the investigator. Prepare working dilution immediately before use.</p> <table border="0"> <tr> <td>Western Blot</td><td>1:2,000 – 1:20,000</td></tr> <tr> <td>Immunohistochemistry</td><td>1:200 – 1:2,000</td></tr> <tr> <td>Immunocytochemistry</td><td>1:200 – 1:2,000</td></tr> <tr> <td>ELISA</td><td>1:10,000 – 1:50,000</td></tr> </table>	Western Blot	1:2,000 – 1:20,000	Immunohistochemistry	1:200 – 1:2,000	Immunocytochemistry	1:200 – 1:2,000	ELISA	1:10,000 – 1:50,000
Western Blot	1:2,000 – 1:20,000								
Immunohistochemistry	1:200 – 1:2,000								
Immunocytochemistry	1:200 – 1:2,000								
ELISA	1:10,000 – 1:50,000								
APPLICATION NOTES	Not all listed applications have been specifically tested by our laboratory.								
ADDITIONAL INFO	<p>https://www.fortislife.com/p/A80-304P</p> <p>Use the link above to view SDS, a current list of citations, and other product specific information.</p>								

This document certifies that this product has met all of the quality control standards defined by Bethyl Laboratories, Inc.
Michael Spencer, PhD Date: October 29, 2024

**Detection of human IgG-Fc Fragment by western blot.**

Samples: Whole cell lysate (10 µg) from HEK293T, VLN3G2, and Jurkat cells prepared using NETN lysis buffer. *Antibody:* HRP-conjugated Goat anti-Human IgG-Fc Fragment Cross-Adsorbed Antibody (A80-304P) used for WB at 0.1 µg/ml. *Secondary:* None. *Detection:* Chemiluminescence with an exposure time of 30 seconds.