

# Human IgG–Fc Fragment Cross–Adsorbed Antibody

Goat Polyclonal

Conjugate    Biotin

Antigen Affinity Purified

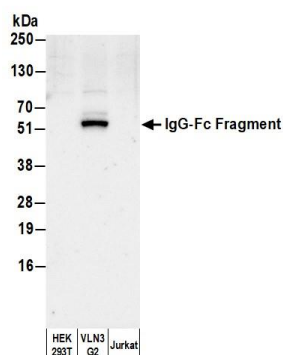
Catalog No.    A80–304B

Lot No.        24

APPLICATIONS	WB, IHC, ICC, ELISA								
SPECIES REACTIVITY	Human. Minimum reactivity to bovine, chicken, horse, mouse, rabbit, rat and sheep								
AMOUNT	1 ml								
CONCENTRATION	0.5 mg/ml								
STORAGE/SHELF LIFE	2 – 8°C / 1 year from date of receipt								
PHYSICAL STATE	Liquid								
BUFFER	Phosphate Buffered Saline (PBS) containing 0.2% BSA and 0.09% Sodium Azide								
ISOTYPE	IgG								
ORIGIN	USA								
PRODUCTION PROCEDURES	<p>Antiserum was solid phase adsorbed to ensure class specificity. Antiserum was cross adsorbed using bovine, chicken, horse, mouse, rabbit, rat and sheep immunosorbents to remove cross reactive antibodies. The antibody to human IgG was isolated by affinity chromatography using antigen coupled to agarose beads and conjugated to biotin.</p> <p>Immunoglobulin concentration was determined using Beer’s Law where 1 mg/mL IgG has an A280 of 1.4.</p> <p>By immunoelectrophoresis and ELISA this antibody reacts specifically with human IgG. Cross reactivity with IgA and IgM is negligible. No antibody was detected against non–immunoglobulin serum proteins. Less than 1% cross reactivity to bovine, chicken, horse, mouse, rabbit, rat and sheep IgG was detected. This antibody may cross react with IgG from other species.</p>								
APPLICATIONS	<p>Centrifuge tube to remove product from lid. Optimal working dilutions should be determined experimentally by the investigator. Prepare working dilution immediately before use.</p> <table><tr><td>Western Blot</td><td>1:10,000 – 1:200,000</td></tr><tr><td>Immunohistochemistry</td><td>1:250 – 1:2500</td></tr><tr><td>Immunocytochemistry</td><td>1:100 – 1:500</td></tr><tr><td>ELISA</td><td>1:10,000 – 1:200,000</td></tr></table>	Western Blot	1:10,000 – 1:200,000	Immunohistochemistry	1:250 – 1:2500	Immunocytochemistry	1:100 – 1:500	ELISA	1:10,000 – 1:200,000
Western Blot	1:10,000 – 1:200,000								
Immunohistochemistry	1:250 – 1:2500								
Immunocytochemistry	1:100 – 1:500								
ELISA	1:10,000 – 1:200,000								
APPLICATION NOTES	Not all listed applications have been specifically tested by our laboratory.								
ADDITIONAL INFO	<p><a href="https://www.fortislife.com/p/A80-304B">https://www.fortislife.com/p/A80-304B</a></p> <p>Use the link above to view SDS, a current list of citations, and other product specific information.</p>								

This document certifies that this product has met all of the quality control standards defined by Bethyl Laboratories, Inc.  
Michael Spencer, PhD

Date: July 31, 2024

**Detection of human IgG-Fc Fragment by western blot.**

*Samples:* Whole cell lysate (10 µg) from HEK293T, VLN3G2, and Jurkat cells prepared using NETN lysis buffer. *Antibody:* Biotinylated Goat anti-Human IgG-Fc Fragment Cross-Adsorbed Antibody (A80-304B) used for WB at 0.1 µg/ml. *Secondary:* HRP-conjugated Rabbit anti-Biotin Antibody (A150-109P). *Detection:* Chemiluminescence with an exposure time of 3 seconds.