

Human IgG-Fc Fragment Cross-Adsorbed Antibody

Goat Polyclonal

Antigen Affinity Purified

Catalog No. A80-304A

Lot No. 2

APPLICATIONS	WB, IHC, ICC, ELISA
SPECIES REACTIVITY	Human. Minimum reactivity to bovine, chicken, horse, mouse, rabbit, rat and sheep
AMOUNT	1 ml
CONCENTRATION	0.5 mg/ml
STORAGE/SHELF LIFE	2 – 8°C / 1 year from date of receipt
PHYSICAL STATE	Liquid
BUFFER	Phosphate Buffered Saline (PBS) containing 0.09% Sodium Azide
ISOTYPE	IgG
ORIGIN	USA
PRODUCTION PROCEDURES	Antiserum was solid phase adsorbed to ensure class specificity. Antiserum was cross adsorbed using bovine, chicken, horse, mouse, rabbit, rat and sheep immunosorbents to remove cross reactive antibodies. The antibody to human IgG was isolated by affinity chromatography using antigen coupled to agarose beads.

Immunoglobulin concentration was determined using Beer's Law where 1mg/mL IgG has an A280 of 1.4.

By immunoelectrophoresis and ELISA this antibody reacts specifically with human IgG. Cross reactivity with IgA and IgM is negligible. No antibody was detected against non-immunoglobulin serum proteins. Less than 1% cross reactivity to bovine, chicken, horse, mouse, rabbit, rat and sheep IgG was detected. This antibody may cross react with IgG from other species.

APPLICATIONS Centrifuge tube to remove product from lid. Optimal working dilutions should be determined experimentally by the investigator. Prepare working dilution immediately before use.

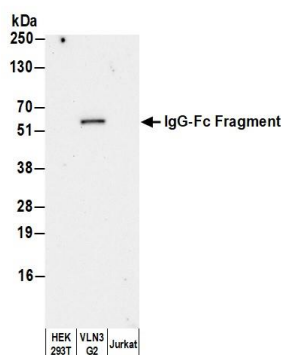
Western Blot	1:1000 – 1:20,000
Immunohistochemistry	1:200 – 1:2,000
Immunocytochemistry	1:200 – 1:2,000
ELISA	1:1000 – 1:20,000; for coating plates 1:100 – 1:250

APPLICATION NOTES Not all listed applications have been specifically tested by our laboratory.

ADDITIONAL INFO <https://www.fortislifesciences.com/p/A80-304A>

Use the link above to view SDS, a current list of citations, and other product specific information.

This document certifies that this product has met all of the quality control standards defined by Bethyl Laboratories, Inc.
Michael Spencer, PhD Date: February 6, 2024

**Detection of human IgG-Fc Fragment by western blot.**

Samples: Whole cell lysate (10 µg) from HEK293T, VLN3G2, and Jurkat cells prepared using NETN lysis buffer. *Antibody:* Affinity Purified Goat anti-Human IgG-Fc Fragment Cross-Adsorbed Antibody (A80-304A) used for WB at 0.1 µg/ml. *Secondary:* HRP-conjugated Donkey anti-Goat IgG Heavy and Light Chain Cross-Adsorbed Antibody (A50-201P). *Detection:* Chemiluminescence with an exposure time of 30 seconds.