

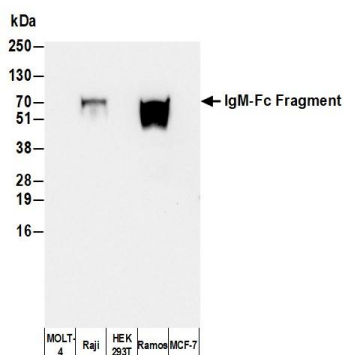
Human IgM–Fc Fragment Antibody

Goat Polyclonal
Antigen Affinity Purified
Catalog No. A80–100A
Lot No. 240508

APPLICATIONS	WB, IHC, ICC, ELISA								
SPECIES REACTIVITY	Human								
AMOUNT	1 ml								
CONCENTRATION	1 mg/ml								
STORAGE/SHELF LIFE	2 – 8°C / 2 years from date of receipt								
PHYSICAL STATE	Liquid								
BUFFER	Phosphate Buffered Saline (PBS) containing 0.09% Sodium Azide								
ISOTYPE	IgG								
ORIGIN	USA								
PRODUCTION PROCEDURES	<p>Antiserum was solid phase adsorbed to ensure class specificity. The antibody was isolated by affinity chromatography using antigen coupled to agarose beads.</p> <p>Immunoglobulin concentration was determined using Beer’s Law where 1mg/mL IgG has an A280 of 1.4.</p> <p>By immunoelectrophoresis and ELISA this antibody reacts specifically with human IgM. Cross reactivity with other immunoglobulins and light chains is less than 1%. This antibody may cross react with IgM from other species.</p>								
APPLICATIONS	<p>Centrifuge tube to remove product from lid. Optimal working dilutions should be determined experimentally by the investigator. Prepare working dilution immediately before use.</p> <table><tr><td>Western Blot</td><td>1:1000 – 1:30,000</td></tr><tr><td>Immunohistochemistry</td><td>1:200 – 1:2000</td></tr><tr><td>Immunocytochemistry</td><td>1:200 – 1:2000</td></tr><tr><td>ELISA</td><td>1:1000 – 1:30,000; for coating plates 1:100 – 1:500</td></tr></table>	Western Blot	1:1000 – 1:30,000	Immunohistochemistry	1:200 – 1:2000	Immunocytochemistry	1:200 – 1:2000	ELISA	1:1000 – 1:30,000; for coating plates 1:100 – 1:500
Western Blot	1:1000 – 1:30,000								
Immunohistochemistry	1:200 – 1:2000								
Immunocytochemistry	1:200 – 1:2000								
ELISA	1:1000 – 1:30,000; for coating plates 1:100 – 1:500								
APPLICATION NOTES	Not all listed applications have been specifically tested by our laboratory.								
ADDITIONAL INFO	<p>https://www.fortislife.com/p/A80-100A</p> <p>Use the link above to view SDS, a current list of citations, and other product specific information.</p>								

This document certifies that this product has met all of the quality control standards defined by Bethyl Laboratories, Inc.
Michael Spencer, PhD

Date: May 14, 2024

**Detection of human IgM-Fc Fragment by western blot.**

Samples: Whole cell lysate (50 µg) from MOLT-4, Raji, HEK293T, Ramos, and MCF-7 cells prepared using NETN lysis buffer. **Antibody:** Affinity Purified Goat anti-Human IgM-Fc Fragment Antibody (A80-100A) used for WB at 0.1 µg/ml. **Secondary:** HRP-conjugated Goat anti-Rabbit IgG Heavy and Light Chain Cross-Adsorbed Antibody (A120-201P). **Detection:** Chemiluminescence with an exposure time of 3 seconds.