

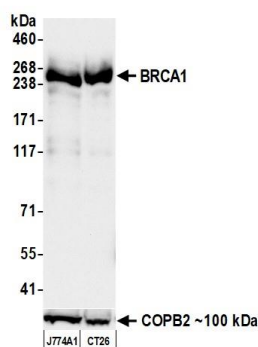
# BRCA1 Recombinant Monoclonal Antibody [BLR319M]

## Rabbit Recombinant Monoclonal

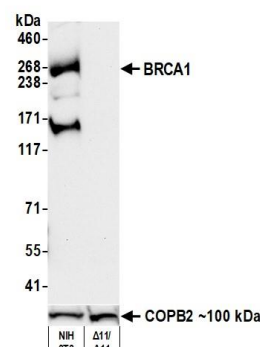
Purified		RefSeq ID	NP_033894.3
Catalog No.	A700-319	Uniprot ID	P48754
Lot No.	1	GeneID	12189

<b>APPLICATIONS</b>	WB, IP, Flow Cyt						
<b>SPECIES REACTIVITY</b>	Mouse						
<b>AMOUNT</b>	100 µl (10 blots)						
<b>CONCENTRATION</b>	1000 µg/ml						
<b>STORAGE/SHELF LIFE</b>	2 – 8°C / 1 year from date of receipt						
<b>PHYSICAL STATE</b>	Liquid						
<b>BUFFER</b>	Phosphate Buffered Saline (PBS) with 0.09% Sodium Azide, BSA-Free						
<b>ISOTYPE</b>	IgG						
<b>CLONE #</b>	BLR319M						
<b>ORIGIN</b>	USA						
<b>PRODUCTION PROCEDURES</b>	<p>Recombinant antibody was purified from cell culture supernatant.</p> <p>Immunogen was a peptide representing a region between residue 500 and 550 of mouse Breast cancer type 1 susceptibility protein (aka BRCA1) using the numbering given in entry NP_033894.3 (Gene ID 12189).</p>						
<b>APPLICATIONS</b>	<p>Centrifuge tube to remove product from lid. Optimal working dilutions should be determined experimentally by the investigator. Prepare working dilution immediately before use.</p> <table><tr><td>Western Blot</td><td>1:1000</td></tr><tr><td>Immunoprecipitation</td><td>6 µl/mg lysate</td></tr><tr><td>Flow Cytometry</td><td>Fixed in 4% formaldehyde and permeabilized with 90% methanol. 0.05 µl per 1 x 10<sup>6</sup> cells.</td></tr></table>	Western Blot	1:1000	Immunoprecipitation	6 µl/mg lysate	Flow Cytometry	Fixed in 4% formaldehyde and permeabilized with 90% methanol. 0.05 µl per 1 x 10 <sup>6</sup> cells.
Western Blot	1:1000						
Immunoprecipitation	6 µl/mg lysate						
Flow Cytometry	Fixed in 4% formaldehyde and permeabilized with 90% methanol. 0.05 µl per 1 x 10 <sup>6</sup> cells.						
<b>APPLICATION NOTES</b>	<p>All western blot analysis is performed using 5% Milk-TBST for blocking and as antibody diluent. Primary antibody is incubated overnight.</p> <p>Western blots of cell lysates are performed using Goat anti-Rabbit IgG Heavy and Light Chain Antibody (Cat. No. A120-101P).</p> <p>Western blots of immunoprecipitates are performed using Goat anti-Rabbit Light Chain HRP Conjugate (Cat. No. A120-113P) with 5% Normal Pig Serum (Cat. No. S100-020) added to the blocking buffer.</p>						
<b>ADDITIONAL INFO</b>	<p><a href="https://www.fortislifescience.com/p/A700-319">https://www.fortislifescience.com/p/A700-319</a></p> <p>Use the link above to view SDS, a current list of citations, and other product specific information.</p>						

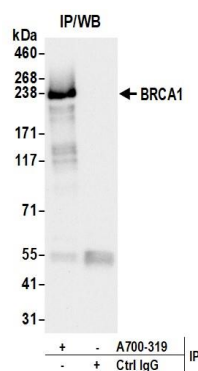
This document certifies that this product has met all of the quality control standards defined by Bethyl Laboratories, Inc.  
Michael Spencer, PhD Date: April 1, 2024



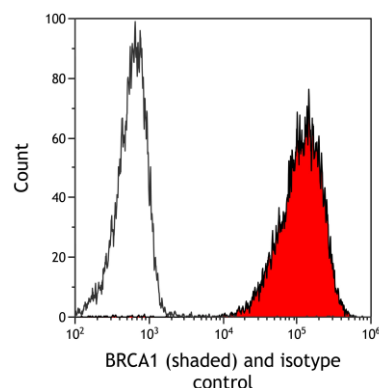
**Detection of mouse BRCA1 by western blot. Samples:** Whole cell lysate (50 µg) from J774A1 and CT26 cells prepared using NETN lysis buffer. **Antibody:** Rabbit anti-BRCA1 recombinant monoclonal antibody [BLR319M] (A700-319 lot 1) used at 1:1000. **Secondary:** HRP-conjugated goat anti-rabbit IgG (A120-101P). **Detection:** Chemiluminescence with an exposure time of 30 seconds. Lower Panel: Rabbit anti-COPB2 antibody (A304-523A).



**Detection of mouse BRCA1 by western blot. Samples:** Whole cell lysate (50 µg) from mouse fibroblast BRCA1 delta11/delta11(S12) and NIH 3T3 cells prepared using NETN lysis buffer. **Antibody:** Rabbit anti-BRCA1 recombinant monoclonal antibody [BLR319M] (A700-319 lot 1) used at 1:1000. **Secondary:** HRP-conjugated goat anti-rabbit IgG (A120-101P). **Detection:** Chemiluminescence with an exposure time of 30 seconds. Lower Panel: Rabbit anti-COPB2 antibody (A304-523A).



**Detection of mouse BRCA1 by western blot of immunoprecipitates. Samples:** Whole cell lysate (1.0 mg per IP reaction; 20% of IP loaded) from J774A1 cells prepared using NETN lysis buffer. **Antibody:** Rabbit anti-BRCA1 recombinant monoclonal antibody [BLR319M] (A700-319 lot 1) used at 6 µl per reaction. For blotting immunoprecipitated BRCA1, A700-319 was used at 1:1000. **Detection:** Chemiluminescence with an exposure time of 30 seconds.



**Detection of mouse BRCA1 (shaded) in NIH3T3 cells by flow cytometry. Antibody:** Rabbit anti-BRCA1 recombinant monoclonal antibody [BLR319M] (A700-319) or isotype control (unshaded). **Secondary:** DyLight® 650-conjugated goat anti-rabbit IgG (A120-101D5).