

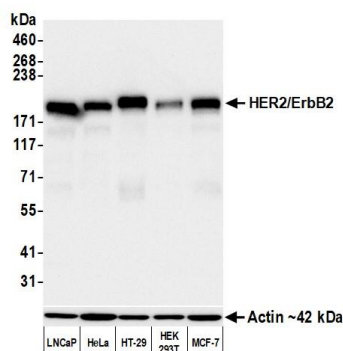
# HER2/ErbB2 Recombinant Monoclonal Antibody [BLR241L]

## Rabbit Recombinant Monoclonal

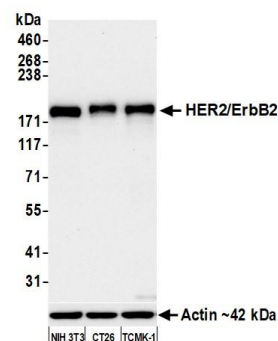
Purified		RefSeq ID	NP_004439.2
Catalog No.	A700-241	Uniprot ID	P04626
Lot No.	A700-241-1	GeneID	2064

<b>APPLICATIONS</b>	WB, IP, IHC, ICC, Flow Cyt										
<b>SPECIES REACTIVITY</b>	Human, Mouse										
<b>AMOUNT</b>	100 µl (50+ tests)										
<b>CONCENTRATION</b>	250 µg/ml										
<b>STORAGE/SHELF LIFE</b>	2 – 8°C / 1 year from date of receipt										
<b>PHYSICAL STATE</b>	Liquid										
<b>BUFFER</b>	Borate Buffered Saline (BBS) pH 8.2 with 0.1% BSA and 0.09% Sodium Azide										
<b>ISOTYPE</b>	IgG										
<b>CLONE #</b>	BLR241L										
<b>ORIGIN</b>	USA										
<b>PRODUCTION PROCEDURES</b>	<p>Recombinant antibody was purified from cell culture supernatant.</p> <p>Immunogen was a peptide representing a region between residue 1205 and the C-terminus (residue 1255) of human receptor tyrosine-protein kinase ErbB-2 (aka HER2) using the numbering given in entry NP_004439.2 (Gene ID 2064).</p>										
<b>APPLICATIONS</b>	<p>Centrifuge tube to remove product from lid. Optimal working dilutions should be determined experimentally by the investigator. Prepare working dilution immediately before use.</p> <table><tr><td>Western Blot</td><td>1:1,000</td></tr><tr><td>Immunoprecipitation</td><td>20 µl/1 mg lysate</td></tr><tr><td>Immunohistochemistry</td><td>1:100 to 1:500. Epitope retrieval with Tris-EDTA pH 9.0 is recommended for FFPE tissue sections.</td></tr><tr><td>Immunocytochemistry</td><td>1:100 to 1:500. Epitope retrieval with Tris-EDTA pH 9.0 is recommended for FFPE cell sections.</td></tr><tr><td>Flow Cytometry</td><td>Fixed in 4% formaldehyde and permeabilized with 90% methanol. 0.25 µl per 1 x 10<sup>6</sup> cells.</td></tr></table>	Western Blot	1:1,000	Immunoprecipitation	20 µl/1 mg lysate	Immunohistochemistry	1:100 to 1:500. Epitope retrieval with Tris-EDTA pH 9.0 is recommended for FFPE tissue sections.	Immunocytochemistry	1:100 to 1:500. Epitope retrieval with Tris-EDTA pH 9.0 is recommended for FFPE cell sections.	Flow Cytometry	Fixed in 4% formaldehyde and permeabilized with 90% methanol. 0.25 µl per 1 x 10 <sup>6</sup> cells.
Western Blot	1:1,000										
Immunoprecipitation	20 µl/1 mg lysate										
Immunohistochemistry	1:100 to 1:500. Epitope retrieval with Tris-EDTA pH 9.0 is recommended for FFPE tissue sections.										
Immunocytochemistry	1:100 to 1:500. Epitope retrieval with Tris-EDTA pH 9.0 is recommended for FFPE cell sections.										
Flow Cytometry	Fixed in 4% formaldehyde and permeabilized with 90% methanol. 0.25 µl per 1 x 10 <sup>6</sup> cells.										
<b>IHC HUMAN CONTROLS</b>	Bladder Carcinoma, Breast Carcinoma, Colon Carcinoma, Skin Carcinoma, Hep-G2 Cells, LNCap Cells, MCF-7 Cells, PANC-1 Cells										
<b>ADDITIONAL INFO</b>	<p><a href="https://www.fortislifesciences.com/p/A700-241">https://www.fortislifesciences.com/p/A700-241</a></p> <p>Use the link above to view SDS, a current list of citations, and other product specific information.</p>										

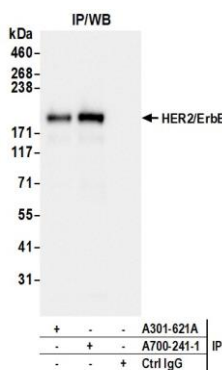
This document certifies that this product has met all of the quality control standards defined by Bethyl Laboratories, Inc.  
Michael Spencer, PhD Date: January 30, 2023

**Detection of human HER2/ErbB2 by western blot.**

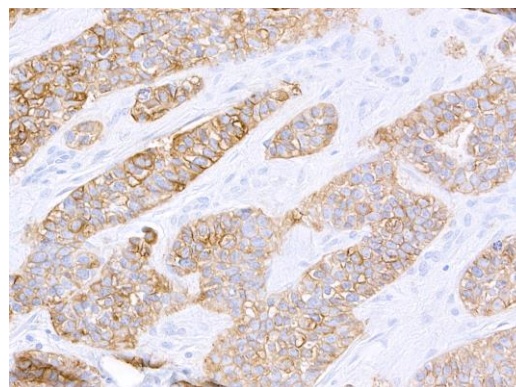
**Samples:** Whole cell lysate (10 µg) from LNCaP, HeLa, HT-29, HEK293T, and MCF-7 cells prepared using NETN lysis buffer. **Antibody:** Rabbit anti-HER2/ErbB2 recombinant monoclonal antibody [BLR241L] (A700-241 lot 1) used at 1:1000. **Secondary:** HRP-conjugated goat anti-rabbit IgG (A120-101P). Chemiluminescence with an exposure time of 10 seconds. Lower Panel: Rabbit anti-Actin recombinant monoclonal antibody [BLR057F] (A700-057).

**Detection of mouse HER2/ErbB2 by western blot.**

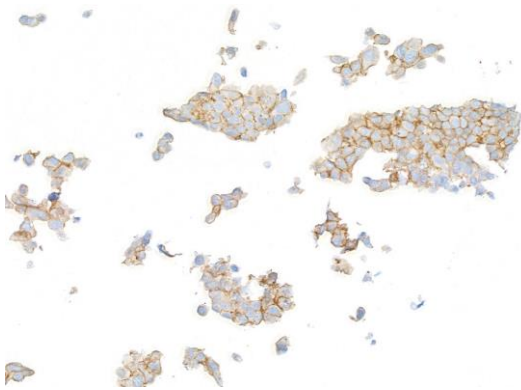
**Samples:** Whole cell lysate (10 µg) from NIH 3T3, CT26, and TCMK-1 cells prepared using NETN lysis buffer. **Antibody:** Rabbit anti-HER2/ErbB2 recombinant monoclonal antibody [BLR241L] (A700-241 lot 1) used at 1:1000. **Secondary:** HRP-conjugated goat anti-rabbit IgG (A120-101P). Chemiluminescence with an exposure time of 30 seconds. Lower Panel: Rabbit anti-Actin recombinant monoclonal antibody [BLR057F] (A700-057).



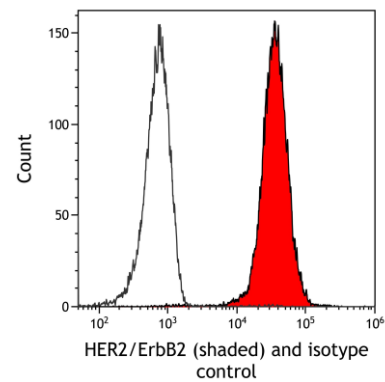
**Detection of human HER2/ErbB2 by western blot of immunoprecipitates.** **Samples:** Whole cell lysate (1.0 mg per IP reaction; 20% of IP loaded) from HeLa cells prepared using NETN lysis buffer. **Antibodies:** Rabbit anti-HER2/ErbB2 recombinant monoclonal antibody [BLR241L] (A700-241 lot 1) used for IP at 20 µl/mg lysate. HER2/ErbB2 was also immunoprecipitated by a second antibody against a different epitope of HER2/ErbB2 (A301-621A). For blotting immunoprecipitated HER2/ErbB2, A700-241 was used at 1:1000. Chemiluminescence with an exposure time of 1 second.



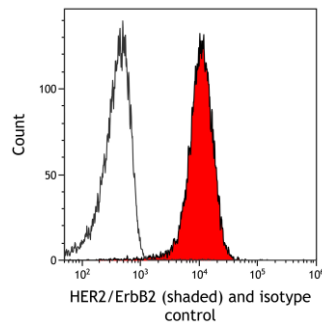
**Detection of human HER2/ErbB2 by immunohistochemistry.** **Sample:** FFPE section of human breast carcinoma. **Antibody:** Rabbit anti-HER2/ErbB2 recombinant monoclonal antibody [BLR241L] (A700-241). **Secondary:** HRP-conjugated goat anti-rabbit IgG (A120-501P).



**Detection of human HER2/ErbB2 by immunocytochemistry.** *Sample:* FFPE section of LNCaP cells. *Antibody:* Rabbit anti-HER2/ErbB2 recombinant monoclonal antibody [BLR241L] (A700-241). *Secondary:* HRP-conjugated goat anti-rabbit IgG (A120-501P).



**Detection of human HER2/ErbB2 (shaded) in FaDu cells by flow cytometry.** *Antibody:* Rabbit anti-HER2/ErbB2 recombinant monoclonal antibody [BLR241L] (A700-241) or isotype control (unshaded). *Secondary:* DyLight® 650-conjugated goat anti-rabbit IgG (A120-101D5).



**Detection of mouse HER2/ErbB2 (shaded) in NIH3T3 cells by flow cytometry.** *Antibody:* Rabbit anti-HER2/ErbB2 recombinant monoclonal antibody [BLR241L] (A700-241) or isotype control (unshaded). *Secondary:* DyLight® 650-conjugated goat anti-rabbit IgG (A120-101D5).