

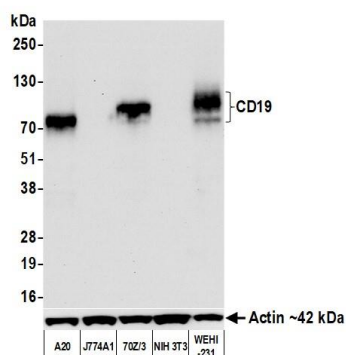
CD19 Recombinant Monoclonal Antibody [BLR208K]

Rabbit Recombinant Monoclonal

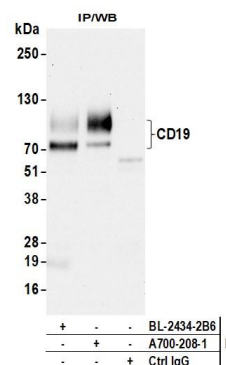
Purified		RefSeq ID	NP_033974.2
Catalog No.	A700-208	Uniprot ID	P25918
Lot No.	1	GeneID	12478

APPLICATIONS	WB, IP, IHC, ICC								
SPECIES REACTIVITY	Mouse								
AMOUNT	100 µl (50+ tests)								
CONCENTRATION	1000 µg/ml								
STORAGE/SHELF LIFE	2 – 8°C / 1 year from date of receipt								
PHYSICAL STATE	Liquid								
BUFFER	Borate Buffered Saline (BBS) pH 8.2 with 0.09% Sodium Azide, BSA-Free								
ISOTYPE	IgG								
CLONE #	BLR208K								
ORIGIN	USA								
PRODUCTION PROCEDURES	<p>Recombinant antibody was purified from cell culture supernatant.</p> <p>Immunogen was a peptide representing a region between residue 497 and the C-terminus (residue 547) of mouse B-lymphocyte antigen CD19 using the numbering given in entry NP_033974.2 (Gene ID 12478).</p>								
APPLICATIONS	<p>Centrifuge tube to remove product from lid. Optimal working dilutions should be determined experimentally by the investigator. Prepare working dilution immediately before use.</p> <table><tr><td>Western Blot</td><td>1:1000</td></tr><tr><td>Immunoprecipitation</td><td>6 µl/mg lysate</td></tr><tr><td>Immunohistochemistry</td><td>1:100 to 1:500. Epitope retrieval with citrate buffer pH6.0 is recommended for FFPE tissue sections.</td></tr><tr><td>Immunocytochemistry</td><td>1:100 to 1:500. Epitope retrieval with citrate buffer pH6.0 is recommended for FFPE cell sections.</td></tr></table>	Western Blot	1:1000	Immunoprecipitation	6 µl/mg lysate	Immunohistochemistry	1:100 to 1:500. Epitope retrieval with citrate buffer pH6.0 is recommended for FFPE tissue sections.	Immunocytochemistry	1:100 to 1:500. Epitope retrieval with citrate buffer pH6.0 is recommended for FFPE cell sections.
Western Blot	1:1000								
Immunoprecipitation	6 µl/mg lysate								
Immunohistochemistry	1:100 to 1:500. Epitope retrieval with citrate buffer pH6.0 is recommended for FFPE tissue sections.								
Immunocytochemistry	1:100 to 1:500. Epitope retrieval with citrate buffer pH6.0 is recommended for FFPE cell sections.								
APPLICATION NOTES	<p>All western blot analysis is performed using 5% Milk-TBST for blocking and as antibody diluent. Primary antibody is incubated overnight.</p> <p>Western blots of cell lysates are performed using Goat anti-Rabbit IgG Heavy and Light Chain Antibody (A120-101P).</p> <p>Western blots of immunoprecipitates are performed using Goat anti-Rabbit Light Chain HRP Conjugate (A120-113P) with 5% Normal Pig Serum (S100-020) added to the blocking buffer.</p>								
IHC MOUSE CONTROLS	Bone Marrow, Spleen, 7OZ/3 Cells, A20 Cells, CH27 Cells, WEHI-231 Cells								
ADDITIONAL INFO	<p>https://www.fortislifesciences.com/p/A700-208</p> <p>Use the link above to view SDS, a current list of citations, and other product specific information.</p>								

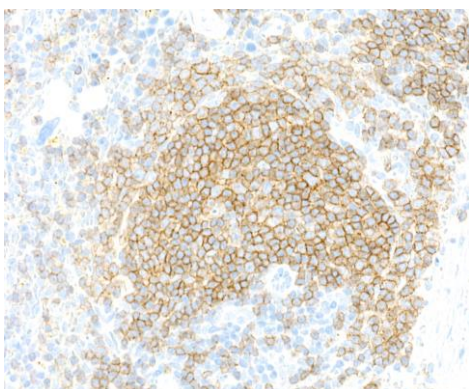
This document certifies that this product has met all of the quality control standards defined by Bethyl Laboratories, Inc.
Michael Spencer, PhD Date: May 6, 2024



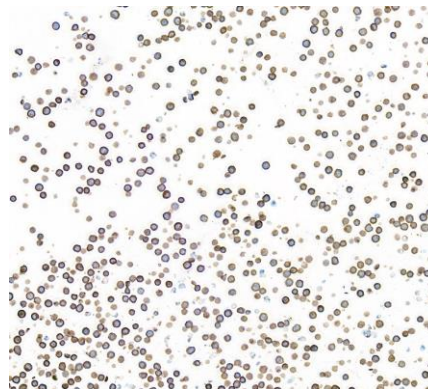
Detection of mouse CD19 by western blot. *Samples:* Whole cell lysate (25 µg) from A20, J774A1, 70Z/3, NIH 3T3, and WEHI-231 cells prepared using NETN lysis buffer. *Antibody:* Rabbit anti-CD19 recombinant monoclonal antibody [BLR208K] (A700-208 lot 1) used at 1:1000. *Secondary:* HRP-conjugated goat anti-rabbit IgG (A120-101P). *Detection:* Chemiluminescence with an exposure time of 10 seconds. Lower Panel: Rabbit anti-Actin recombinant monoclonal antibody [BLR057F] (A700-057).



Detection of mouse CD19 by western blot of immunoprecipitates. *Samples:* Whole cell lysate (1.0 mg per IP reaction; 5% of IP loaded) from WEHI-231 cells prepared using NETN lysis buffer. *Antibodies:* Rabbit anti-CD19 recombinant monoclonal antibody [BLR208K] (A700-208 lot 1) used for IP at 6 µl/mg lysate. CD19 was also immunoprecipitated by a second antibody against a different epitope of CD19 (BL-2434-2B6). For blotting immunoprecipitated CD19, A700-208 was used at 1:1000. *Detection:* Chemiluminescence with an exposure time of 10 seconds.



Detection of mouse CD19 by immunohistochemistry. *Sample:* FFPE section of mouse spleen. *Antibody:* Rabbit anti-mouse CD19 recombinant monoclonal antibody [BLR208J] (A700-208 Lot 1). *Secondary:* HRP-conjugated goat anti-rabbit IgG (A120-501P).



Detection of mouse CD19 by immunocytochemistry. *Sample:* FFPE section of WEHI-231 cells. *Antibody:* Rabbit anti-mouse CD19 recombinant monoclonal antibody [BLR208J] (A700-208 Lot 1). *Secondary:* HRP-conjugated goat anti-rabbit IgG (A120-501P).