

iNOS Monoclonal Antibody [BLR181J]

Rabbit Recombinant Monoclonal

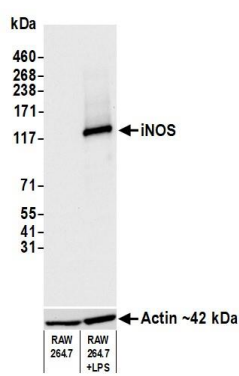
Purified		Protein ID	P29477
Catalog No.	A700-181	GeneID	18126
Lot No.	A700-181-1		



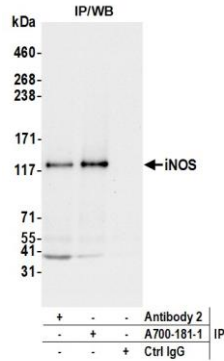
APPLICATIONS	WB, IP, ICC						
SPECIES REACTIVITY	Mouse						
AMOUNT	100 µl (50+ tests)						
CONCENTRATION	1000 µg/ml						
STORAGE/SHELF LIFE	2 – 8° C / 1 year from date of receipt						
PHYSICAL STATE	Liquid						
BUFFER	Borate Buffered Saline (BBS) pH 8.2 with 0.09% Sodium Azide, BSA Free						
ISOTYPE	IgG						
CLONE #	BLR181J						
ORIGIN	USA						
PRODUCTION PROCEDURES	<p>Recombinant antibody was purified from cell culture supernatant.</p> <p>Immunogen was a peptide representing a region between residue 1094 and the C-terminus (residue 1144) of mouse Nitric oxide synthase, inducible, using the numbering given in entry NP_035057.1 (Gene ID 18126).</p>						
APPLICATIONS	<p>Centrifuge tube to remove product from lid. Optimal working dilutions should be determined experimentally by the investigator. Prepare working dilution immediately before use.</p> <table><tr><td>Western Blot</td><td>1:1000</td></tr><tr><td>Immunoprecipitation</td><td>6 µl/1 mg lysate</td></tr><tr><td>Immunocytochemistry</td><td>1:100 to 1:500. Epitope retrieval with citrate buffer pH6.0 is recommended for FFPE tissue sections.</td></tr></table>	Western Blot	1:1000	Immunoprecipitation	6 µl/1 mg lysate	Immunocytochemistry	1:100 to 1:500. Epitope retrieval with citrate buffer pH6.0 is recommended for FFPE tissue sections.
Western Blot	1:1000						
Immunoprecipitation	6 µl/1 mg lysate						
Immunocytochemistry	1:100 to 1:500. Epitope retrieval with citrate buffer pH6.0 is recommended for FFPE tissue sections.						
IHC MOUSE CONTROLS	RAW264.7 Cells						
ADDITIONAL INFO	<p>https://www.bethyl.com/product/A700-181</p> <p>Use the link above to view SDS, a current list of citations, and other product specific information.</p>						

This document certifies that this product has met all of the quality control standards defined by Bethyl Laboratories, Inc.
Brian McWilliams, PhD

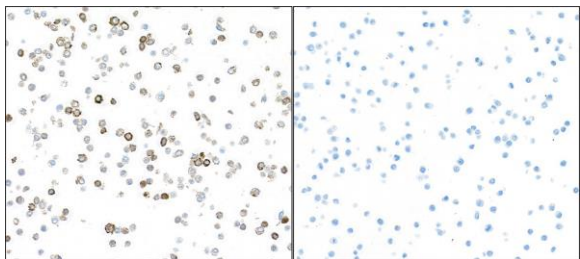
Date: June 30, 2021



Detection of mouse iNOS by western blot. *Samples:* Whole cell lysate (10 µg) from RAW 264.7 and LPS-treated RAW 264.7 cells prepared using NETN lysis buffer. *Antibody:* Rabbit anti-iNOS recombinant monoclonal antibody [BLR181J] (A700-181 lot 1) used at 1:1000. Secondary: HRP-conjugated goat anti-rabbit IgG (A120-101P). Chemiluminescence with an exposure time of 3 seconds. Lower Panel: Rabbit anti-Actin recombinant monoclonal antibody [BLR057F] (A700-057).



Detection of mouse iNOS by western blot of immunoprecipitates. *Samples:* Whole cell lysate (1.0 mg per IP reaction; 20% of IP loaded) from LPS treated RAW 264.7 cells prepared using NETN lysis buffer. *Antibodies:* Rabbit anti-iNOS recombinant monoclonal antibody [BLR181J] (A700-181 lot 1) used for IP at 6 µl/mg lysate. iNOS was also immunoprecipitated by a second antibody against a different epitope of iNOS (Antibody 2). For blotting immunoprecipitated iNOS, A700-181 was used at 1:1000. Chemiluminescence with an exposure time of 10 seconds.



Detection of mouse iNOS in RAW264.7 cells treated with LPS (left) and untreated (right) by ICC. *Antibody:* Rabbit anti-iNOS recombinant monoclonal antibody [BLR181J] (A700-181 lot 1). *Secondary:* HRP-conjugated goat anti-rabbit IgG (A120-501P). *Substrate:* DAB.