

STAT5a Recombinant Monoclonal Antibody [BLR124H]

Rabbit Recombinant Monoclonal

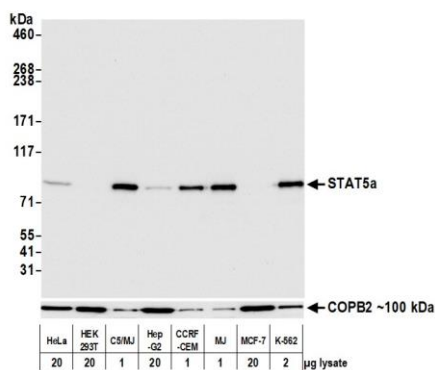
Purified		Protein ID	NP_001275647.1
Catalog No.	A700-124	GeneID	6776
Lot No.	A700-124-1		



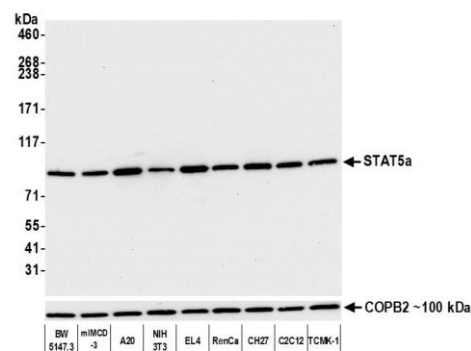
APPLICATIONS	WB, IP, IHC, ICC								
SPECIES REACTIVITY	Human, Mouse								
AMOUNT	100 µl (50+ tests)								
CONCENTRATION	100 µg/ml								
STORAGE/SHELF LIFE	2 – 8° C / 1 year from date of receipt								
PHYSICAL STATE	Liquid								
BUFFER	Borate Buffered Saline (BBS) pH 8.2 with 0.1% BSA and 0.09% Sodium Azide								
ISOTYPE	IgG								
CLONE #	BLR124H								
ORIGIN	USA								
PRODUCTION PROCEDURES	<p>Recombinant antibody was purified from cell culture supernatant.</p> <p>Immunogen was a peptide representing a region between residue 744 and the C-terminus (residue 794) of human signal transducer and activator of transcription 5a using the numbering given in entry NP_001275647.1 (Gene ID 6776).</p>								
APPLICATIONS	<p>Centrifuge tube to remove product from lid. Optimal working dilutions should be determined experimentally by the investigator. Prepare working dilution immediately before use.</p> <table><tbody><tr><td>Western Blot</td><td>1:1,000</td></tr><tr><td>Immunoprecipitation</td><td>20 µl/1 mg lysate</td></tr><tr><td>Immunohistochemistry</td><td>1:100 to 1:500. Epitope retrieval with citrate buffer pH6.0 is recommended for FFPE tissue sections.</td></tr><tr><td>Immunocytochemistry</td><td>1:100 to 1:500. Epitope retrieval with citrate buffer pH6.0 is recommended for FFPE cell sections.</td></tr></tbody></table>	Western Blot	1:1,000	Immunoprecipitation	20 µl/1 mg lysate	Immunohistochemistry	1:100 to 1:500. Epitope retrieval with citrate buffer pH6.0 is recommended for FFPE tissue sections.	Immunocytochemistry	1:100 to 1:500. Epitope retrieval with citrate buffer pH6.0 is recommended for FFPE cell sections.
Western Blot	1:1,000								
Immunoprecipitation	20 µl/1 mg lysate								
Immunohistochemistry	1:100 to 1:500. Epitope retrieval with citrate buffer pH6.0 is recommended for FFPE tissue sections.								
Immunocytochemistry	1:100 to 1:500. Epitope retrieval with citrate buffer pH6.0 is recommended for FFPE cell sections.								
IHC HUMAN CONTROLS	Breast, Breast Carcinoma, Lymph Node, Melanoma, Testicular Seminoma, Tonsil, C5/MJ Cells, CCRF-CEM cells, K-562 Cells, KG-1 Cells, MJ Cells								
IHC MOUSE CONTROLS	Spleen, RenCa Cells								
ADDITIONAL INFO	<p>https://www.bethyl.com/product/A700-124</p> <p>Use the link above to view SDS, a current list of citations, and other product specific information.</p>								

This document certifies that this product has met all of the quality control standards defined by Bethyl Laboratories, Inc.
Brian McWilliams, PhD

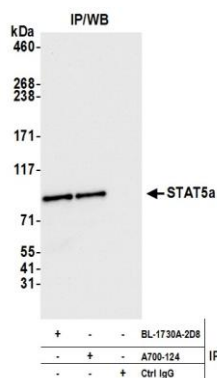
Date: December 1, 2020



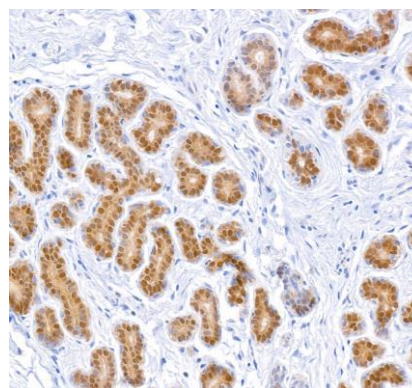
Detection of human STAT5a by western blot. *Samples:* Whole cell lysate from HeLa, HEK293T, C5/MJ, Hep-G2, CCRF-CEM, MJ, MCF-7, and K-562 cells prepared using NETN lysis buffer. *Antibody:* Rabbit anti-STAT5a recombinant monoclonal antibody [BLR124H] (A700-124 lot 1) used at 1:1000. *Secondary:* HRP-conjugated goat anti-rabbit IgG (A120-101P). Chemiluminescence with an exposure time of 3 seconds.



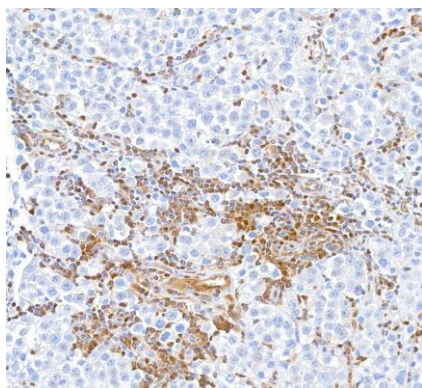
Detection of mouse STAT5a by western blot. *Samples:* Whole cell lysate (10 µg) from BW5147.3, mIMCD-3, A20, NIH 3T3, EL4, RenCa, CH27, C2C12, and TCMK-1 cells prepared using NETN lysis buffer. *Antibody:* Rabbit anti-STAT5a recombinant monoclonal antibody [BLR124H] (A700-124 lot 1) used at 1:1000. *Secondary:* HRP-conjugated goat anti-rabbit IgG (A120-101P). Chemiluminescence with an exposure time of 10 seconds.



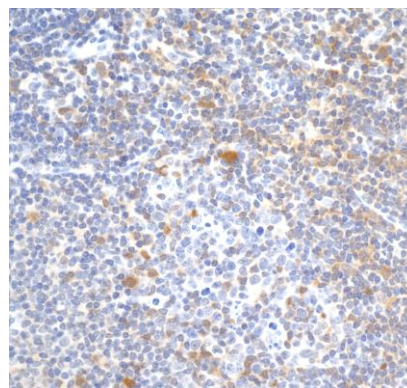
Detection of human STAT5a by western blot of immunoprecipitates. *Samples:* Whole cell lysate (1.0 mg per IP reaction; 20% of IP loaded) from HeLa cells prepared using NETN lysis buffer. *Antibodies:* Rabbit anti-STAT5a recombinant monoclonal antibody [BLR124H] (A700-124 lot 1) used for IP at 20 µl/mg lysate. STAT5a was also immunoprecipitated by rabbit anti-STAT5a antibody BL-1730A-2D8. For blotting immunoprecipitated STAT5a, A700-124 was used at 1:1000. Chemiluminescence with an exposure time of 3 seconds.



Detection of human STAT5a in FFPE breast carcinoma by immunohistochemistry. *Antibody:* Rabbit anti-STAT5a recombinant monoclonal antibody [BLR124H] (A700-124 Lot 1). *Secondary:* HRP-conjugated goat anti-rabbit IgG (A120-501P). *Substrate:* DAB.



Detection of human STAT5a in FFPE testicular seminoma by immunohistochemistry. *Antibody:* Rabbit anti-STAT5a recombinant monoclonal antibody [BLR124H] (A700-124). *Secondary:* HRP-conjugated goat anti-rabbit IgG (A120-501P). *Substrate:* DAB.



Detection of mouse STAT5a in FFPE spleen by immunohistochemistry. *Antibody:* Rabbit anti-STAT5a recombinant monoclonal antibody [BLR124H] (A700-124 Lot 1). *Secondary:* HRP-conjugated goat anti-rabbit IgG (A120-501P). *Substrate:* DAB.



Detection of human STAT5a in FFPE CCRF-CEM cells by immunocytochemistry. *Antibody:* Rabbit anti-STAT5a recombinant monoclonal antibody [BLR124H] (A700-124 Lot 1). *Secondary:* HRP-conjugated goat anti-rabbit IgG (A120-501P). *Substrate:* DAB.