

GATA3 Recombinant Monoclonal Antibody [BLR121H]

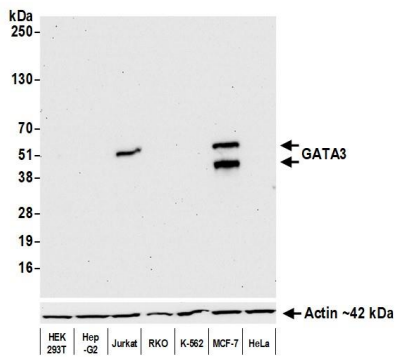
Rabbit Recombinant Monoclonal

Purified	Protein ID	NM_001002295.1
Catalog No. A700-121-T	GeneID	2625
Lot No. A700-121-T-1		

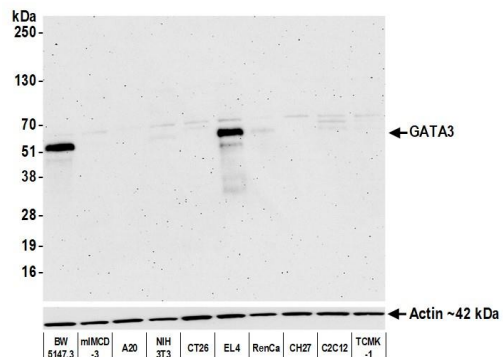


APPLICATIONS	WB, IP, IHC, ICC
SPECIES REACTIVITY	Human, Mouse
AMOUNT	10 µl (5+ tests)
CONCENTRATION	1000 µg/ml
STORAGE/SHELF LIFE	2 – 8° C / 1 year from date of receipt
PHYSICAL STATE	Liquid
BUFFER	Borate Buffered Saline (BBS) pH 8.2 with 0.09% Sodium Azide, BSA Free
ISOTYPE	IgG
CLONE #	BLR121H
ORIGIN	USA
PRODUCTION PROCEDURES	Recombinant antibody was purified from cell culture supernatant. Immunogen was a peptide representing a region between residue 150 and 200 of human trans-acting T-cell-specific transcription factor GATA3 using the numbering given in entry NM_001002295.1 (Gene ID 2625).
APPLICATIONS	Centrifuge tube to remove product from lid. Optimal working dilutions should be determined experimentally by the investigator. Prepare working dilution immediately before use. Western Blot 1:1,000 Immunoprecipitation 6 µl/1 mg lysate Immunohistochemistry 1:100 to 1:500. Epitope retrieval with citrate buffer pH6.0 is recommended for FFPE tissue sections. Immunocytochemistry 1:100 to 1:500. Epitope retrieval with citrate buffer pH6.0 is recommended for FFPE cell sections.
IHC HUMAN CONTROLS	Breast Carcinoma, Placenta, MCF-7 Cells, SK-N-MC Cells
ADDITIONAL INFO	https://www.bethyl.com/product/A700-121-T Use the link above to view SDS, a current list of citations, and other product specific information.

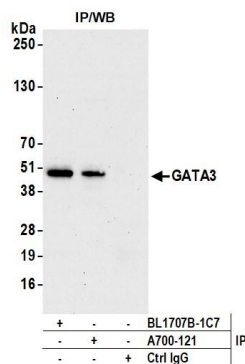
This document certifies that this product has met all of the quality control standards defined by Bethyl Laboratories, Inc.
Eric McIntush, PhD | Chief Scientific Officer Date: October 14, 2020



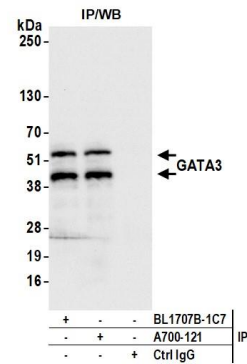
Detection of human GATA3 by western blot. *Samples:* Whole cell lysate (10 µg) from HEK293T, Hep-G2, Jurkat, RKO, K-562, MCF-7, and HeLa cells prepared using NETN lysis buffer. ***Antibody:*** Rabbit anti-GATA3 recombinant monoclonal antibody [BLR121H] (A700-121-T lot 1) used at 1:1000. ***Secondary:*** HRP-conjugated goat anti-rabbit IgG (A120-101P). Chemiluminescence with an exposure time of 30 seconds.



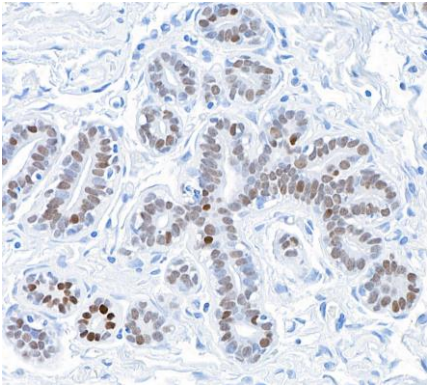
Detection of mouse GATA3 by western blot. *Samples:* Whole cell lysate (50 µg) from BW5147.3, mIMCD-3, A20, NIH 3T3, CT26, EL4, RenCa, CH27, C2C12, and TCMK-1 cells prepared using NETN lysis buffer. ***Antibody:*** Rabbit anti-GATA3 recombinant monoclonal antibody [BLR121H] (A700-121-T lot 1) used at 1:1000. ***Secondary:*** HRP-conjugated goat anti-rabbit IgG (A120-101P). Chemiluminescence with an exposure time of 3 minutes.



Detection of human GATA3 by western blot of immunoprecipitates. *Samples:* Whole cell lysate (1.0 mg per IP reaction; 20% of IP loaded) from Jurkat cells prepared using NETN lysis buffer. ***Antibodies:*** Rabbit anti-GATA3 recombinant monoclonal antibody [BLR121H] (A700-121-T lot 1) used for IP at 6 µl per reaction. GATA3 was also immunoprecipitated by rabbit anti-GATA3 antibody BL1707B-1C7. For blotting immunoprecipitated GATA3, A700-121-T was used at 1:1000. Chemiluminescence with an exposure time of 30 seconds.



Detection of human GATA3 by western blot of immunoprecipitates. *Samples:* Whole cell lysate (1.0 mg per IP reaction; 20% of IP loaded) from MCF-7 cells prepared using NETN lysis buffer. ***Antibodies:*** Rabbit anti-GATA3 recombinant monoclonal antibody [BLR121H] (A700-121-T lot 1) used for IP at 6 µl per reaction. GATA3 was also immunoprecipitated by rabbit anti-GATA3 antibody BL1707B-1C7. For blotting immunoprecipitated GATA3, A700-121-T was used at 1:1000. Chemiluminescence with an exposure time of 3 seconds.



Detection of human GATA3 in FFPE breast carcinoma by immunohistochemistry. *Antibody:* Rabbit anti-GATA3 recombinant monoclonal antibody [BLR121H] (A700-121-T Lot1). *Secondary:* HRP-conjugated goat anti-rabbit IgG (A120-501P). *Substrate:* DAB.



Detection of human GATA3 in FFPE MCF-7 cells by immunocytochemistry. *Antibody:* Rabbit anti-GATA3 recombinant monoclonal antibody [BLR121H] (A700-121-T Lot 1). *Secondary:* HRP-conjugated goat anti-rabbit IgG (A120-501P). *Substrate:* DAB.