

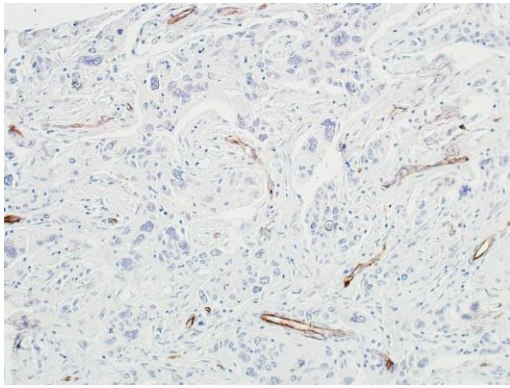
VE-Cadherin Recombinant Monoclonal Antibody [BLR091G]

Rabbit Recombinant Monoclonal

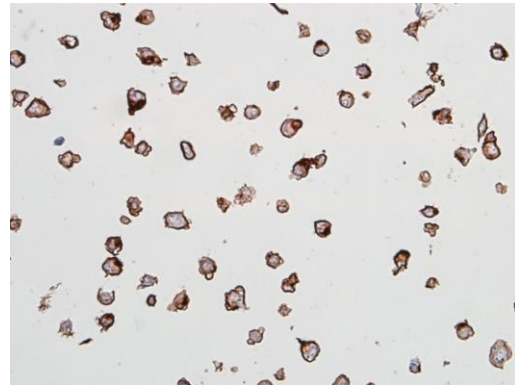
Purified		RefSeq ID	NP_001786.2
Catalog No.	A700-091	Uniprot ID	P33151
Lot No.	1	GeneID	1003

APPLICATIONS	WB, IP, IHC, ICC, IHC-IF										
SPECIES REACTIVITY	Human										
AMOUNT	100 µl (50+ tests)										
CONCENTRATION	1000 µg/ml										
STORAGE/SHELF LIFE	2 – 8°C / 1 year from date of receipt										
PHYSICAL STATE	Liquid										
BUFFER	Borate Buffered Saline (BBS) pH 8.2 with 0.09% Sodium Azide, BSA-Free										
ISOTYPE	IgG										
CLONE #	BLR091G										
ORIGIN	USA										
PRODUCTION PROCEDURES	Recombinant antibody was purified from cell culture supernatant. Immunogen was a recombinant protein representing the extracellular domain of human VE-Cadherin (residues 48–599, NP_001786.2).										
APPLICATIONS	Centrifuge tube to remove product from lid. Optimal working dilutions should be determined experimentally by the investigator. Prepare working dilution immediately before use. <table><tr><td>Western Blot</td><td>1:1000</td></tr><tr><td>Immunoprecipitation</td><td>6 µl/1 mg lysate</td></tr><tr><td>Immunohistochemistry</td><td>1:100 to 1:500. Epitope retrieval with citrate buffer pH6.0 is recommended for FFPE tissue sections.</td></tr><tr><td>Immunocytochemistry</td><td>1:100 to 1:500. Epitope retrieval with citrate buffer pH6.0 is recommended for FFPE cell sections.</td></tr><tr><td>Immunofluorescence (IHC)</td><td>1:100 to 1:500. Epitope retrieval with citrate buffer pH6.0 is recommended for FFPE tissue sections.</td></tr></table>	Western Blot	1:1000	Immunoprecipitation	6 µl/1 mg lysate	Immunohistochemistry	1:100 to 1:500. Epitope retrieval with citrate buffer pH6.0 is recommended for FFPE tissue sections.	Immunocytochemistry	1:100 to 1:500. Epitope retrieval with citrate buffer pH6.0 is recommended for FFPE cell sections.	Immunofluorescence (IHC)	1:100 to 1:500. Epitope retrieval with citrate buffer pH6.0 is recommended for FFPE tissue sections.
Western Blot	1:1000										
Immunoprecipitation	6 µl/1 mg lysate										
Immunohistochemistry	1:100 to 1:500. Epitope retrieval with citrate buffer pH6.0 is recommended for FFPE tissue sections.										
Immunocytochemistry	1:100 to 1:500. Epitope retrieval with citrate buffer pH6.0 is recommended for FFPE cell sections.										
Immunofluorescence (IHC)	1:100 to 1:500. Epitope retrieval with citrate buffer pH6.0 is recommended for FFPE tissue sections.										
IHC HUMAN CONTROLS	Breast Carcinoma, Prostate Carcinoma, Renal Cell Carcinoma, BeWo Cells, HUVEC-C Cells										
ADDITIONAL INFO	https://www.fortislife.com/p/A700-091 Use the link above to view SDS, a current list of citations, and other product specific information.										

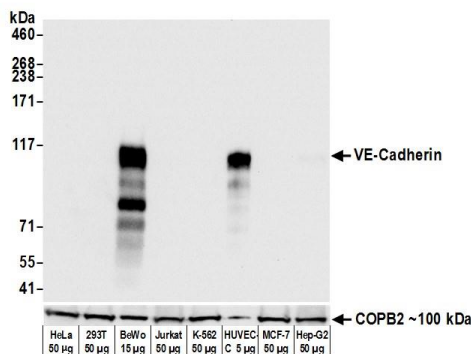
This document certifies that this product has met all of the quality control standards defined by Bethyl Laboratories, Inc.
Michael Spencer, PhD Date: March 23, 2023



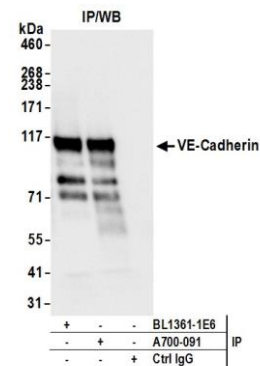
Detection of human VE-Cadherin in FFPE breast carcinoma by IHC. *Antibody:* Rabbit anti-VE-Cadherin recombinant monoclonal antibody [BLR091G] (A700-091 lot 1). *Secondary:* HRP-conjugated goat anti-rabbit IgG (A120-501P). *Substrate:* DAB.



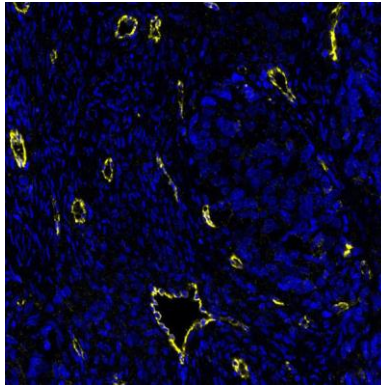
Detection of human VE-Cadherin in FFPE HUVEC-C cells by ICC. *Antibody:* Rabbit anti-VE-Cadherin recombinant monoclonal antibody [BLR091G] (A700-091 lot 1). *Secondary:* HRP-conjugated goat anti-rabbit IgG (A120-501P). *Substrate:* DAB.



Detection of human VE-Cadherin by western blot. *Samples:* Whole cell lysate from HeLa, HEK293T, BeWo, Jurkat, K-562, HUVEC-C, MCF-7, and Hep-G2 cells prepared using NETN lysis buffer. *Antibody:* Rabbit anti-VE-Cadherin recombinant monoclonal antibody [BLR091G] (A700-091 lot 1) used at 1:1000. *Secondary:* HRP-conjugated goat anti-rabbit IgG (A120-101P). *Detection:* Chemiluminescence with an exposure time of 3 seconds. Lower Panel: Rabbit anti-COPB2 (A304-523A).



Detection of human VE-Cadherin by western blot of immunoprecipitates. *Samples:* Whole cell lysate (1.0 mg per IP reaction; 20% of IP loaded) from BeWo cells prepared using NETN lysis buffer. *Antibodies:* Rabbit anti-VE-Cadherin recombinant monoclonal antibody [BLR091G] (A700-091 lot 1) used for IP at 6 µl per reaction. VE-Cadherin was also immunoprecipitated by rabbit anti-VE-Cadherin recombinant monoclonal antibody (BL1361-1E6). For blotting immunoprecipitated VE-Cadherin, A700-091 was used at 1:1000. *Detection:* Chemiluminescence with an exposure time of 3 seconds.



Detection of human VE-Cadherin in FFPE ovarian carcinoma by immunohistochemistry-IF. *Antibody:* Rabbit anti-VE-Cadherin recombinant monoclonal antibody [BLR091G] (A700-091 Lot 1). *Secondary:* HRP-conjugated goat anti-rabbit IgG (A120-501P). *Substrate:* Opal™. Counterstain: DAPI.