

Ki-67 Recombinant Monoclonal Antibody [BLR021E]

Rabbit Recombinant Monoclonal

Purified		RefSeq ID	NP_002408.3
Catalog No.	A700-021	Uniprot ID	P46013
Lot No.	A700-021-3	GeneID	4288

APPLICATIONS	IHC, ICC, IHC-IF, ICC-IF, Flow Cyt, mIF
SPECIES REACTIVITY	Human
AMOUNT	100 µl (50+ tests)
CONCENTRATION	50 µg/ml
STORAGE/SHELF LIFE	2 - 8°C / 1 year from date of receipt
PHYSICAL STATE	Liquid
BUFFER	Borate Buffered Saline (BBS) pH 8.2 with 0.1% BSA and 0.09% Sodium Azide
ISOTYPE	IgG
CLONE #	BLR021E
ORIGIN	USA

PRODUCTION PROCEDURES Recombinant antibody was purified from cell culture supernatant.

Immunogen was a peptide representing the repetitive 66 bp element of human Ki-67 using the numbering given in entry NP_002408.2 (GeneID 4288).

APPLICATIONS Centrifuge tube to remove product from lid. Optimal working dilutions should be determined experimentally by the investigator. Prepare working dilution immediately before use.

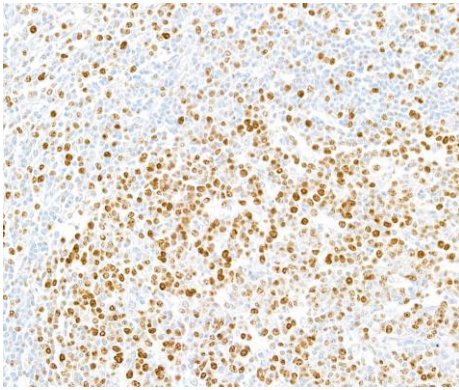
Immunohistochemistry	1:100 to 1:500. Epitope retrieval with citrate buffer pH 6.0 is recommended for FFPE tissue sections.
Immunocytochemistry	1:100 to 1:500. Epitope retrieval with citrate buffer pH 6.0 is recommended for FFPE cell sections.
Immunofluorescence (IHC)	1:100 to 1:500. Epitope retrieval with citrate buffer pH6.0 is recommended for FFPE tissue sections.
Immunofluorescence (ICC)	1:100 - 1:500
Flow Cytometry	Fixed in 4% formaldehyde and permeabilized with 90% methanol. 1 µl per 1×10^6 cells.
Multiplex Immunofluorescence	1:250

IHC HUMAN CONTROLS Lung Carcinoma TIL, Ovarian Carcinoma, Tonsil, HeLa Cells, HL-60 Cells, Jurkat Cells, MOLT-4 Cells, OVCAR-8 Cells

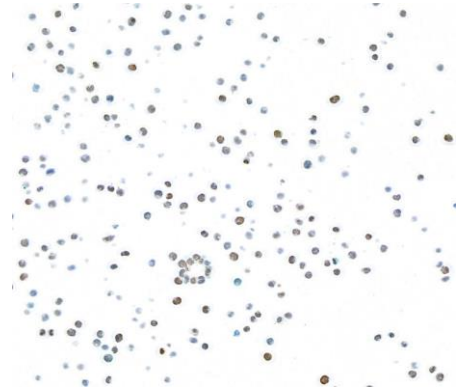
ADDITIONAL INFO <https://www.fortislife.com/p/A700-021>

Use the link above to view SDS, a current list of citations, and other product specific information.

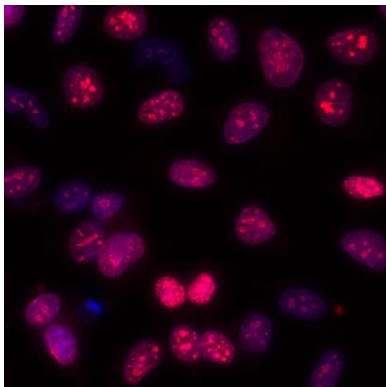
This document certifies that this product has met all of the quality control standards defined by Bethyl Laboratories, Inc.
Michael Spencer, PhD Date: November 15, 2022



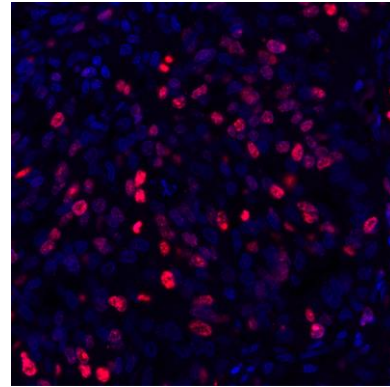
Detection of human Ki-67 by immunohistochemistry.
Sample: FFPE section of human tonsil. *Antibody:* Rabbit anti-Ki-67 recombinant monoclonal antibody [BLR021E] (A700-021 lot 3). *Secondary:* HRP-conjugated goat anti-rabbit IgG (A120-501P).



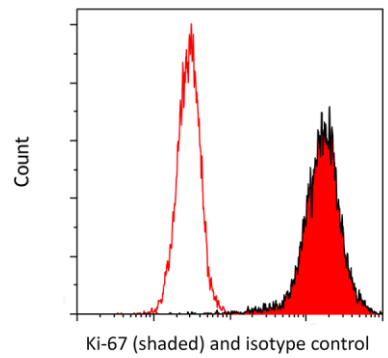
Detection of human Ki-67 by immunocytochemistry.
Sample: FFPE section of MOLT-4 cells. *Antibody:* Rabbit anti-Ki-67 recombinant monoclonal antibody [BLR021E] (A700-021 lot 3). *Secondary:* HRP-conjugated goat anti-rabbit IgG (A120-501P).



Detection of human Ki-67 by immunocytochemistry.
Sample: acetone/methanol fixed HeLa cells. *Antibody:* Rabbit anti-Ki-67 recombinant monoclonal antibody [BLR021E] (A700-021 lot 1) used at 1:100. *Secondary:* DyLight® 594-conjugated goat anti-rabbit IgG (A120-101D4). *Counterstain:* DAPI.



Detection of human Ki-67 (red) by immunohistochemistry. *Sample:* FFPE section of human ovarian carcinoma. *Antibody:* Rabbit anti-Ki-67 recombinant monoclonal antibody [BLR021E] (A700-021 lot 1) used at 1:500. *Secondary:* HRP-conjugated goat anti-rabbit IgG (A120-501P). *Substrate:* Opal™. *Counterstain:* DAPI (blue).



Detection of human Ki-67 (shaded) in MOLT4 cells by flow cytometry. *Antibody:* Rabbit anti-Ki-67 recombinant monoclonal [BLR021E] (A700-021 lot 1) or isotype control (unshaded). *Secondary:* DyLight® 650-conjugated goat anti-rabbit IgG (A120-201D5).