

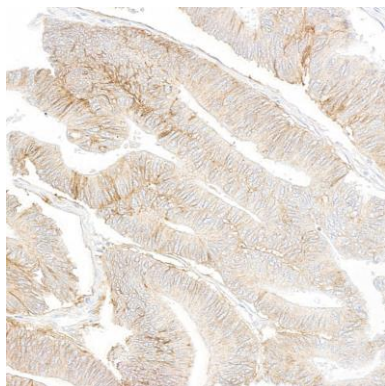
IGF1R Monoclonal Antibody [BC10]

Mouse Monoclonal

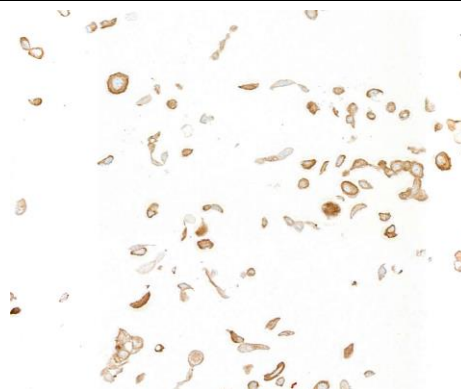
Purified		RefSeq ID	NP_000866.1
Catalog No.	A500-039A	Uniprot ID	P08069
Lot No.	A500-039A-1	GeneID	3480

APPLICATIONS	IHC, ICC
SPECIES REACTIVITY	Human
AMOUNT	100 µl (50+ tests)
CONCENTRATION	500 µg/ml
STORAGE/SHELF LIFE	2 – 8°C / 1 year from date of receipt
PHYSICAL STATE	Liquid
BUFFER	Phosphate Buffered Saline (PBS) pH 8.2 with 0.1% BSA and 0.09% Sodium Azide
ISOTYPE	IgG2a
CLONE #	BC10
ORIGIN	USA
PRODUCTION PROCEDURES	Monoclonal antibody was purified from cell culture supernatant. Immunogen was human IGF1R
APPLICATIONS	Centrifuge tube to remove product from lid. Optimal working dilutions should be determined experimentally by the investigator. Prepare working dilution immediately before use. Immunohistochemistry 1:10 to 1:200. Epitope retrieval with citrate buffer pH 6.0 is recommended for FFPE tissue sections. Immunocytochemistry 1:100 to 1:500. Epitope retrieval with citrate buffer pH6.0 is recommended for FFPE cell sections.
IHC HUMAN CONTROLS	Colon Carcinoma, Gastric Carcinoma, Ovarian Carcinoma, DLD-1 Cells, HT-29 Cells, NCI-H226 Cells
ADDITIONAL INFO	https://www.fortislifesciences.com/p/A500-039A Use the link above to view SDS, a current list of citations, and other product specific information.

This document certifies that this product has met all of the quality control standards defined by Bethyl Laboratories, Inc.
Michael Spencer, PhD Date: March 2, 2023

**Detection of human IGF1R by immunohistochemistry.**

Sample: FFPE section of colon carcinoma. *Antibody:* Mouse anti-IGF1R monoclonal antibody [BC10] (A500-039A lot 1). *Secondary:* HRP-conjugated goat anti-mouse IgG (A90-116P).

**Detection of human IGF1R by immunocytochemistry.**

Sample: FFPE section of NCI-H226 cells. *Antibody:* Mouse anti-IGF1R monoclonal antibody [BC10] (A500-039A lot 1). *Secondary:* HRP-conjugated goat anti-mouse IgG (A90-116P).