

HLA-DR Monoclonal Antibody [LN3]

Mouse Monoclonal

Purified		RefSeq ID	NP_061984.2
Catalog No.	A500-022A-T	Uniprot ID	P01903
Lot No.	2	GenelD	3122

APPLICATIONS WB, IHC, ICC, IHC-IF, Flow Cyt

SPECIES REACTIVITY Human

AMOUNT 10 µl (5+ tests)

CONCENTRATION 50 µg/ml

STORAGE/SHELF LIFE 2 – 8°C / 1 year from date of receipt

PHYSICAL STATE Liquid

BUFFER Phosphate Buffered Saline (PBS) pH 8.2 with 0.1% BSA and 0.09% Sodium Azide

ISOTYPE IgG2b

CLONE # LN3

ORIGIN USA

PRODUCTION PROCEDURES The monoclonal antibody was purified from cell culture supernatant.

Immunogen was activated human peripheral blood mononuclear cells.

APPLICATIONS Centrifuge tube to remove product from lid. Optimal working dilutions should be determined experimentally by the investigator. Prepare working dilution immediately before use.

Western Blot 1:1000

Immunohistochemistry 1:100 – 1:500. Epitope retrieval with citrate buffer pH 6.0 is recommended for FFPE tissue sections.

Immunocytochemistry 1:100 – 1:500. Epitope retrieval with citrate buffer pH 6.0 is recommended for FFPE cell sections.

Immunofluorescence (IHC) 1:100 to 1:500. Epitope retrieval with citrate buffer pH6.0 is recommended for FFPE cell sections.

Flow Cytometry Live or cells fixed in 4% formaldehyde and permeabilized with 90% methanol. 0.5 µl per 1 x 10⁶ cells.

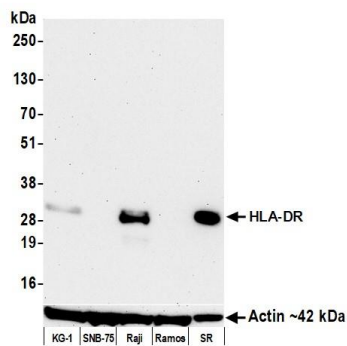
APPLICATION NOTES Validation by western blot was performed using a 4–8% SDS–PAGE.

IHC HUMAN CONTROLS Lung Carcinoma TIL, Tonsil, SR Cells

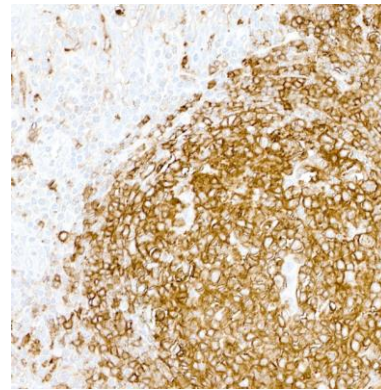
ADDITIONAL INFO <https://www.fortislifesciences.com/p/A500-022A-T>

Use the link above to view SDS, a current list of citations, and other product specific information.

This document certifies that this product has met all of the quality control standards defined by Bethyl Laboratories, Inc.
Michael Spencer, PhD Date: May 11, 2023



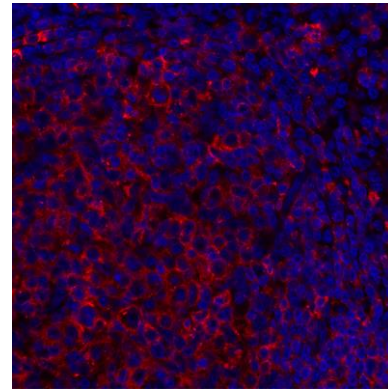
Detection of human HLA-DR by western blot. *Samples:* Whole cell lysate (50 µg) from KG-1, SNB-75, Raji, Ramos, and SR (10 µg) cells prepared using NETN lysis buffer. *Antibody:* Mouse anti-HLA-DR monoclonal antibody [LN3] (A500-022A lot 2) used at 1:1000. *Secondary:* HRP-conjugated goat anti-mouse IgG (A90-116P). *Detection:* Chemiluminescence with an exposure time of 3 minutes. Lower Panel: Rabbit anti-Actin recombinant monoclonal antibody [BLR057F] (A700-057).



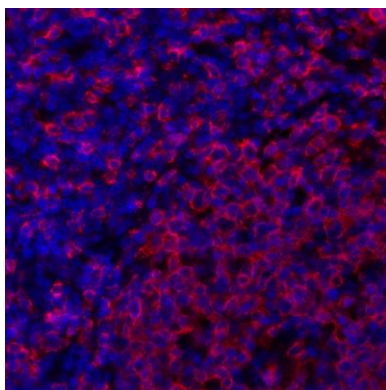
Detection of human HLA-DR by immunohistochemistry. *Sample:* FFPE section of tonsil. *Antibody:* Mouse anti-HLA-DR monoclonal antibody [LN3] (A500-022A-2). *Secondary:* HRP-conjugated goat anti-mouse IgG (A90-116P).



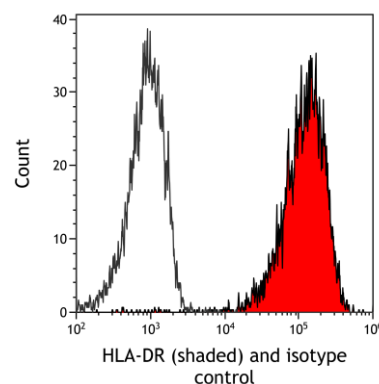
Detection of human HLA-DR by immunocytochemistry. *Sample:* FFPE section of SR cells. *Antibody:* Mouse anti-HLA-DR monoclonal antibody [LN3] (A500-022A-2). *Secondary:* HRP-conjugated goat anti-mouse IgG (A90-116P).



Detection of human HLA-DR by immunohistochemistry. *Sample:* FFPE section of human tonsil. *Antibody:* Mouse monoclonal anti-HLA-DR antibody [LN3] (A500-022A lot 1) used at 1:100. *Secondary:* DyLight® 594-conjugated goat anti-mouse IgG (A90-116D4).



Detection of human HLA-DR (red) by immunohistochemistry. *Sample:* FFPE section of human tonsil. *Antibody:* Mouse anti-HLA-DR monoclonal antibody [LN3] (A500-022A lot 1) used at 1:250. *Secondary:* HRP-conjugated goat anti-Mouse IgG (A90-116P). *Substrate:* Opal™. *Counterstain:* DAPI (blue).



Detection of human HLA-DR (shaded) in Daudi cells by flow cytometry. *Antibody:* Mouse anti-HLA-DR monoclonal antibody [LN3] (A500-022A) or isotype control (unshaded). *Secondary:* DyLight® 488-conjugated goat anti-mouse IgG (A90-516D2).