

IGF2BP2 Monoclonal Antibody [3A3.5F1]

Mouse Monoclonal

Purified	Protein ID	NP_001007226.1
Catalog No. A500-013A-T	GeneID	10644
Lot No. A500-013A-T-2		



APPLICATIONS	WB, IP
SPECIES REACTIVITY	Human, Mouse
AMOUNT	20 µl (2 blots)
CONCENTRATION	40 µg/ml
STORAGE/SHELF LIFE	2 – 8° C / 1 year from date of receipt
PHYSICAL STATE	Liquid
BUFFER	Tris-buffered Saline containing 0.1% BSA and 0.09% Sodium Azide
ISOTYPE	IgG1-kappa
CLONE #	3A3.5F1
ORIGIN	USA
PRODUCTION PROCEDURES	The immunogen was the full length recombinant human protei IGF2BP2 (GeneID 10644). The hybridoma was grown in a bioreactor and the antibody was purified using a mouse immunoglobulin binding ligand.

Isotype was determined by immunoelectrophoresis.

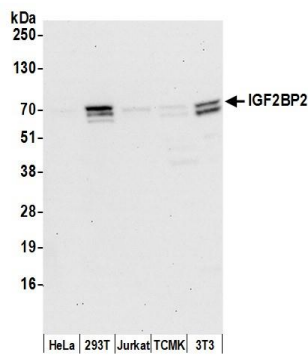
APPLICATIONS Centrifuge tube to remove product from lid. Optimal working dilutions should be determined experimentally by the investigator. Prepare working dilution immediately before use.

Western Blot	1:1000
Immunoprecipitation	20 µl/mg lysate

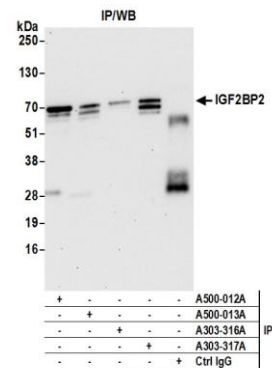
APPLICATION NOTES Validation by IP/Western Blot was performed using a 4–20% SDS–PAGE.

ADDITIONAL INFO <https://www.bethyl.com/product/A500-013A-T>
Use the link above to view SDS, a current list of citations, and other product specific information.

This document certifies that this product has met all of the quality control standards defined by Bethyl Laboratories, Inc.
Eric McIntush, PhD | Chief Scientific Officer Date: June 21, 2019



Detection of human and mouse IGF2BP2 by western blot.
Samples: Whole cell lysate (15 µg) from HeLa, HEK293T, Jurkat, mouse TCMK-1, and mouse NIH 3T3 cells prepared using NETN lysis buffer. *Antibody:* Mouse monoclonal anti-IGF2BP2 antibody [3A3.5F1] (A500-013A-T lot 2) used for WB at 1:1000. *Secondary:* HRP-conjugated goat anti-mouse IgG (A90-116P). Chemiluminescence with an exposure time of 30 seconds.



Detection of human IGF2BP2 by western blot of immunoprecipitates.
Samples: Whole cell lysate (0.5 or 1.0 mg per IP reaction; 20% of IP loaded) from 293T cells prepared using NETN lysis buffer. *Antibodies:* Mouse monoclonal anti-IGF2BP2 antibody [3A3.5F1] (A500-013A-T lot 2) used for IP at 20 µl per reaction. IGF2BP2 was also immunoprecipitated by mouse monoclonal anti-IGF2BP2 antibody (A500-012A) and rabbit anti-IGF2BP2 antibodies (A303-316A, A303-317A). For blotting immunoprecipitated IGF2BP2, A500-013A-T was used at 1:1000. *Secondary:* HRP-conjugated goat anti-mouse IgG (A90-116P). Chemiluminescence with an exposure time of 30 seconds.