

IGF2BP2 Monoclonal Antibody [1E3.01E5]

Mouse Monoclonal

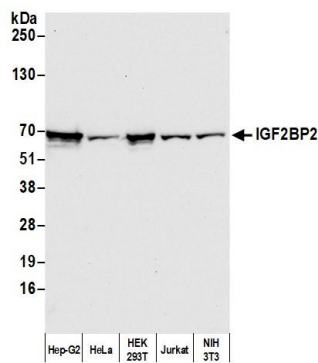
Purified		Protein ID	NP_001007226.1
Catalog No.	A500-012A-T	GeneID	10644
Lot No.	A500-012A-T-4		



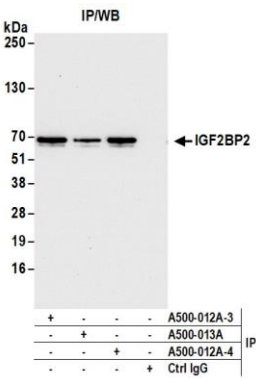
APPLICATIONS	WB, IP				
SPECIES REACTIVITY	Human, Mouse				
AMOUNT	20 µl (2 blots)				
CONCENTRATION	40 µg/ml				
STORAGE/SHELF LIFE	2 – 8° C / 1 year from date of receipt				
PHYSICAL STATE	Liquid				
BUFFER	Tris-buffered Saline containing 0.1% BSA and 0.09% Sodium Azide				
ISOTYPE	IgG1-kappa				
CLONE #	1E3.01E5				
ORIGIN	USA				
PRODUCTION PROCEDURES	<p>The immunogen was the full length recombinant human protein IGF mRNA-binding protein 2 (GeneID 10644). The hybridoma was grown in a bioreactor and the antibody was purified using a mouse immunoglobulin binding ligand.</p> <p>Isotype was determined by immunoelectrophoresis.</p>				
APPLICATIONS	<p>Centrifuge tube to remove product from lid. Optimal working dilutions should be determined experimentally by the investigator. Prepare working dilution immediately before use.</p> <table><tbody><tr><td>Western Blot</td><td>1:1000</td></tr><tr><td>Immunoprecipitation</td><td>20 µl/mg lysate</td></tr></tbody></table>	Western Blot	1:1000	Immunoprecipitation	20 µl/mg lysate
Western Blot	1:1000				
Immunoprecipitation	20 µl/mg lysate				
APPLICATION NOTES	Validation by IP/Western Blot was performed using a 4–20% SDS–PAGE.				
ADDITIONAL INFO	<p>https://www.bethyl.com/product/A500-012A-T</p> <p>Use the link above to view SDS, a current list of citations, and other product specific information.</p>				

This document certifies that this product has met all of the quality control standards defined by Bethyl Laboratories, Inc.
Eric McIntush, PhD | Chief Scientific Officer

Date: February 27, 2020



Detection of human and mouse IGF2BP2 by western blot.
Samples: Whole cell lysate (50 µg) from Hep-G2, HeLa, HEK293T, Jurkat, and NIH 3T3 cells prepared using NETN lysis buffer. *Antibody:* Mouse anti-IGF2BP2 monoclonal antibody [1E3.01E5] (A500-012A-T lot 4) used at 1:1000. *Secondary:* HRP-conjugated goat anti-mouse IgG (A90-116P). Chemiluminescence with an exposure time of 10 seconds.



Detection of human IGF2BP2 by western blot of immunoprecipitates. *Samples:* Whole cell lysate (1.0 mg per IP reaction; 20% of IP loaded) from Hep-G2 cells prepared using NETN lysis buffer. *Antibodies:* Mouse anti-IGF2BP2 monoclonal antibody [1E3.01E5] (A500-012A-T lot 4) used for IP at 8 µl per reaction. IGF2BP2 was also immunoprecipitated by a previous lot of this antibody (lot A500-012A-T-3) and mouse anti-IGF2BP2 antibody A500-013A. For blotting immunoprecipitated IGF2BP2, A500-012A-T was used at 1:1000. Chemiluminescence with an exposure time of 10 seconds.