

Goat IgG Heavy and Light Chain Cross-Adsorbed Antibody

Donkey Polyclonal Conjugate HRP

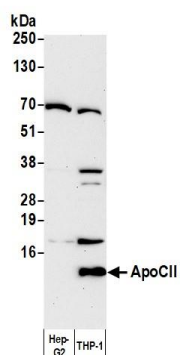
Antigen Affinity Purified

Catalog No. A50-201P

Lot No. 27

APPLICATIONS	WB, IHC, ICC, ELISA								
SPECIES REACTIVITY	Goat. Minimum reactivity to chicken, human, mouse, pig, rabbit and rat								
AMOUNT	1 ml								
CONCENTRATION	0.5 mg/ml								
STORAGE/SHELF LIFE	2 – 8°C / 1 year from date of receipt								
PHYSICAL STATE	Liquid								
BUFFER	Phosphate Buffered Saline (PBS) containing 0.05% Pro-Clean 400								
ISOTYPE	IgG								
ORIGIN	USA								
PRODUCTION PROCEDURES	<p>Antiserum was cross adsorbed using chicken, human, mouse, pig, rabbit and rat immunosorbents to remove cross reactive Antibodies. The antibody to goat IgG was isolated by affinity chromatography using antigen coupled to agarose beads and conjugated to horseradish peroxidase (HRP).</p> <p>Immunoglobulin concentration was determined using Beer's Law where 1mg/mL IgG has an A280 of 1.4.</p> <p>By immunoelectrophoresis and ELISA this antibody reacts specifically with goat IgG and with light chains common to other goat immunoglobulins. No antibody was detected against non-immunoglobulin serum proteins. Less than 1% cross reactivity to chicken, horse, human, mouse, pig, rabbit and rat IgG was detected.</p> <p>This antibody may cross react with IgG from other species.</p>								
APPLICATIONS	<p>Centrifuge tube to remove product from lid. Optimal working dilutions should be determined experimentally by the investigator. Prepare working dilution immediately before use.</p> <table><tr><td>Western Blot</td><td>1:5000 – 1:50,000</td></tr><tr><td>Immunohistochemistry</td><td>1:200 – 1:5000</td></tr><tr><td>Immunocytochemistry</td><td>1:200 – 1:5000</td></tr><tr><td>ELISA</td><td>1:10,000 – 1:100,000</td></tr></table>	Western Blot	1:5000 – 1:50,000	Immunohistochemistry	1:200 – 1:5000	Immunocytochemistry	1:200 – 1:5000	ELISA	1:10,000 – 1:100,000
Western Blot	1:5000 – 1:50,000								
Immunohistochemistry	1:200 – 1:5000								
Immunocytochemistry	1:200 – 1:5000								
ELISA	1:10,000 – 1:100,000								
APPLICATION NOTES	Not all listed applications have been specifically tested by our laboratory.								
ADDITIONAL INFO	<p>https://www.fortislife.com/p/A50-201P</p> <p>Use the link above to view SDS, a current list of citations, and other product specific information.</p>								

This document certifies that this product has met all of the quality control standards defined by Bethyl Laboratories, Inc.
Michael Spencer, PhD Date: January 15, 2025



Detection of human ApoCII by western blot. *Samples:* Whole cell lysate (50 µg) from Hep-G2, and THP-1 cells prepared using NETN lysis buffer. *Antibody:* Affinity Purified Goat anti-Human Apo CII [A10] Antibody (A81-114A) used for WB at 1 µg/ml. *Secondary:* HRP-conjugated Donkey anti-Goat IgG Heavy and Light Chain Cross-Adsorbed Antibody (A50-201P). *Tertiary:* HRP-conjugated Rabbit anti-Biotin Antibody (A150-109P). *Detection:* Chemiluminescence with an exposure time of 3 minutes.