

LUZP1 Antibody

Rabbit Polyclonal

Antigen Affinity Purified

Protein ID NP_001136018.1

Catalog No. A304-634A-T

GeneID 7798

Lot No. A304-634A-T-1

APPLICATIONS WB, IP

SPECIES REACTIVITY Human

AMOUNT 10 µl

CONCENTRATION 1000 µg/ml

STORAGE/SHELF LIFE 2 – 8°C / 1 year from date of receipt

PHYSICAL STATE Liquid

BUFFER Tris-citrate/phosphate buffer, pH 7 to 8 containing 0.09% Sodium Azide

ISOTYPE IgG

ORIGIN USA

PRODUCTION PROCEDURES Antibody was affinity purified using an epitope specific to LUZP1 immobilized on solid support.

The epitope recognized by A304-634A-T maps to a region between residue 1 to 50 of human Leucine Zipper Protein 1 using the numbering given in entry NP_001136018.1 (GeneID 7798).

APPLICATIONS Centrifuge tube to remove product from lid. Optimal working dilutions should be determined experimentally by the investigator. Prepare working dilution immediately before use.

Western Blot 1:1,000 – 1:5,000

Immunoprecipitation 2 – 10 µg/mg lysate

ADDITIONAL INFO <https://www.bethyl.com/product/A304-634A-T>

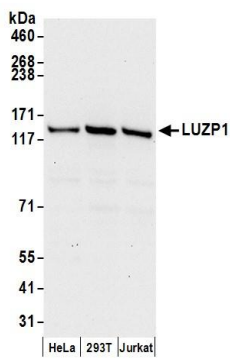
Use the link above to view SDS, a current list of citations, and other product specific information.

IP-western blot protocol: https://www.bethyl.com/content/protocol_IP_WB

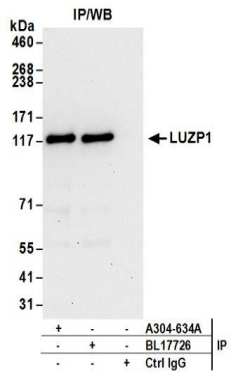
This document certifies that this product has met all of the quality control standards defined by Bethyl Laboratories, Inc.

Michael Spencer, PhD

Date: June 6, 2022



Detection of human LUZP1 by western blot. *Samples:* Whole cell lysate (50 µg) from HeLa, HEK293T, and Jurkat cells prepared using NETN lysis buffer. *Antibodies:* Affinity purified rabbit anti-LUZP1 antibody A304-634A (lot A304-634A-1) used for WB at 0.4 µg/ml. *Detection:* Chemiluminescence with an exposure time of 30 seconds.



Detection of human LUZP1 by western blot of immunoprecipitates. *Samples:* Whole cell lysate (0.5 or 1.0 mg per IP reaction; 20% of IP loaded) from 293T cells prepared using NETN lysis buffer. *Antibodies:* Affinity purified rabbit anti-LUZP1 antibody A304-634A (lot A304-634A-1) used for IP at 6 µg per reaction. LUZP1 was also immunoprecipitated by rabbit anti-LUZP1 antibody BL17726. For blotting immunoprecipitated LUZP1, A304-634A was used at 1 µg/ml. *Detection:* Chemiluminescence with an exposure time of 30 seconds.