

LPAP Antibody

Rabbit Polyclonal

Antigen Affinity Purified

Protein ID NP_005599.1

Catalog No. A304-456A-T

GeneID 5790

Lot No. A304-456A-T-1

APPLICATIONS	WB, IP
SPECIES REACTIVITY	Human
AMOUNT	10 µl
CONCENTRATION	1000 µg/ml
STORAGE/SHELF LIFE	2 – 8°C / 1 year from date of receipt
PHYSICAL STATE	Liquid
BUFFER	Tris-citrate/phosphate buffer, pH 7 to 8 containing 0.09% Sodium Azide
ISOTYPE	IgG
ORIGIN	USA
PRODUCTION PROCEDURES	Antibody was affinity purified using an epitope specific to LPAP immobilized on solid support.

The epitope recognized by A304-456A-T maps to a region between residue 156 to 206 of human Lymphocyte Phosphatase-Associated Phosphoprotein using the numbering given in entry NP_005599.1 (GeneID 5790).

APPLICATIONS Centrifuge tube to remove product from lid. Optimal working dilutions should be determined experimentally by the investigator. Prepare working dilution immediately before use.

Western Blot 1:2,000 – 1:10,000

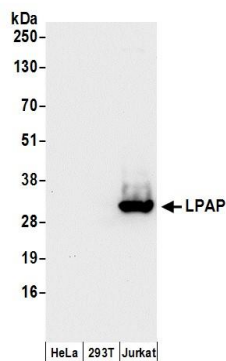
Immunoprecipitation 2 – 10 µg/mg lysate

ADDITIONAL INFO <https://www.bethyl.com/product/A304-456A-T>

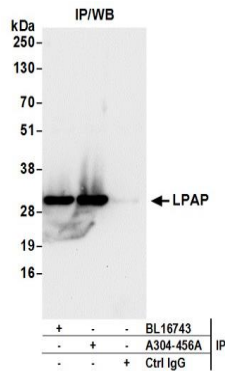
Use the link above to view SDS, a current list of citations, and other product specific information.

IP-western blot protocol: https://www.bethyl.com/content/protocol_IP_WB

This document certifies that this product has met all of the quality control standards defined by Bethyl Laboratories, Inc.
Michael Spencer, PhD Date: June 6, 2022



Detection of human LPAP by western blot. *Samples:* Whole cell lysate (50 µg) prepared using NETN buffer from HeLa, HEK293T, and Jurkat cells. *Antibodies:* Affinity purified rabbit anti-LPAP antibody A304-456A (lot A304-456A-1) used for WB at 0.1 µg/ml. *Detection:* Chemiluminescence with an exposure time of 30 seconds.



Detection of human LPAP by western blot of immunoprecipitates. *Samples:* Whole cell lysate (1 mg for IP; 20% of IP loaded) prepared using NETN buffer from Jurkat cells. *Antibodies:* Affinity purified rabbit anti-LPAP antibody A304-456A (lot A304-456A-1) used for IP at 6 µg per reaction. LPAP was also immunoprecipitated by rabbit anti-LPAP antibody BL16743. For blotting immunoprecipitated LPAP, A304-456A was used at 0.1 µg/ml. *Detection:* Chemiluminescence with an exposure time of 30 seconds.