

EZH2 Antibody

Rabbit Polyclonal

Antigen Affinity Purified

Protein ID CAA64955.1

Catalog No. A304-196A-T

GeneID 2146

Lot No. A304-196A-T-1

APPLICATIONS	IP
SPECIES REACTIVITY	Human
AMOUNT	10 µl
CONCENTRATION	1000 µg/ml
STORAGE/SHELF LIFE	2 – 8°C / 1 year from date of receipt
PHYSICAL STATE	Liquid
BUFFER	Tris-citrate/phosphate buffer, pH 7 to 8 containing 0.09% Sodium Azide
ISOTYPE	IgG
ORIGIN	USA
PRODUCTION PROCEDURES	Antibody was affinity purified using an epitope specific to EZH2 immobilized on solid support.

The epitope recognized by A304-196A-T maps to a region between residue 175 to 225 of human Enhancer of Zeste Homolog 2 using the numbering given in entry CAA64955.1 (GeneID 2146).

Immunoglobulin concentration was determined by extinction coefficient: absorbance at 280 nm of 1.4 equals 1.0 mg of IgG.

APPLICATIONS Centrifuge tube to remove product from lid. Optimal working dilutions should be determined experimentally by the investigator. Prepare working dilution immediately before use.

Western Blot Not recommended. Use rabbit anti-EZH2 antibody A304-197A.

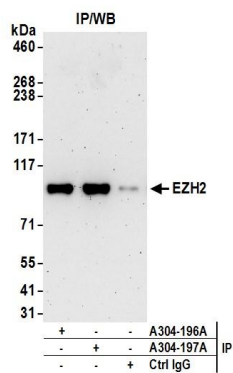
Immunoprecipitation 2 – 10 µg/mg lysate

ADDITIONAL INFO <https://www.bethyl.com/product/A304-196A-T>

Use the link above to view SDS, a current list of citations, and other product specific information.

IP-western blot protocol: https://www.bethyl.com/content/protocol_IP_WB

This document certifies that this product has met all of the quality control standards defined by Bethyl Laboratories, Inc.
Michael Spencer, PhD Date: June 6, 2022



Detection of human EZH2 by western blot of immunoprecipitates. *Samples:* Whole cell lysate (1 mg for IP; 20% of IP loaded) from 293T cells. *Antibodies:* Affinity purified rabbit anti-EZH2 antibody A304-196A (lot A304-196A-1) used for IP at 6 µg/mg lysate. EZH2 was also immunoprecipitated by rabbit anti-EZH2 antibody A304-197A. For blotting immunoprecipitated EZH2, A304-197A was used at 1 µg/ml. *Detection:* Chemiluminescence with an exposure time of 3 minutes.