

YAF2 Antibody

Rabbit Polyclonal

Antigen Affinity Purified

Protein ID NP_005739.2

Catalog No. A303-654A-T

GeneID 10138

Lot No. A303-654A-T-1

APPLICATIONS	WB
SPECIES REACTIVITY	Human
PRESUMED REACTIVITY	Based on 100% sequence identity, this antibody is predicted to react with Mouse
AMOUNT	10 µl
CONCENTRATION	1000 µg/ml
STORAGE/SHELF LIFE	2 – 8°C / 1 year from date of receipt
PHYSICAL STATE	Liquid
BUFFER	Tris-citrate/phosphate buffer, pH 7 to 8 containing 0.09% Sodium Azide
ISOTYPE	IgG
ORIGIN	USA
PRODUCTION PROCEDURES	Antibody was affinity purified using an epitope specific to YAF2 immobilized on solid support.

The epitope recognized by A303-654A-T maps to a region between residue 50 and 100 of human YY1 Associated Factor 2 using the numbering given in entry NP_005739.2 (GeneID 10138).

APPLICATIONS Centrifuge tube to remove product from lid. Optimal working dilutions should be determined experimentally by the investigator. Prepare working dilution immediately before use.

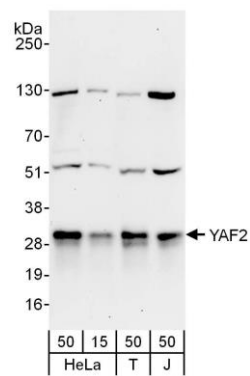
Western Blot 1:1,000 – 1:5,000

Immunoprecipitation Not recommended

ADDITIONAL INFO <https://www.bethyl.com/product/A303-654A-T>

Use the link above to view SDS, a current list of citations, and other product specific information.

This document certifies that this product has met all of the quality control standards defined by Bethyl Laboratories, Inc.
Michael Spencer, PhD Date: June 6, 2022



Detection of human YAF2 by western blot. *Samples:* Whole cell lysate from HeLa (15 and 50 µg), HEK293T (T; 50 µg) and Jurkat (J; 50 µg) cells. *Antibodies:* Affinity purified rabbit anti-YAF2 antibody A303-654A used for WB at 0.4 µg/ml. *Detection:* Chemiluminescence with an exposure time of 3 minutes.