

# Mel-18 Antibody

Rabbit Polyclonal

Antigen Affinity Purified

Protein ID NP\_009075.1

Catalog No. A303-580A-T

GeneID 7703

Lot No. A303-580A-T-1

**APPLICATIONS** WB

**SPECIES REACTIVITY** Human

**AMOUNT** 10 µl

**CONCENTRATION** 1000 µg/ml

**STORAGE/SHELF LIFE** 2 – 8°C / 1 year from date of receipt

**PHYSICAL STATE** Liquid

**BUFFER** Tris-citrate/phosphate buffer, pH 7 to 8 containing 0.09% Sodium Azide

**ISOTYPE** IgG

**ORIGIN** USA

**PRODUCTION PROCEDURES** Antibody was affinity purified using an epitope specific to Mel-18 immobilized on solid support.

The epitope recognized by A303-580A-T maps to a region between residue 125 and 175 of human DNA-binding Protein Mel-18 using the numbering given in entry NP\_009075.1 (GeneID 7703).

**APPLICATIONS** Centrifuge tube to remove product from lid. Optimal working dilutions should be determined experimentally by the investigator. Prepare working dilution immediately before use.

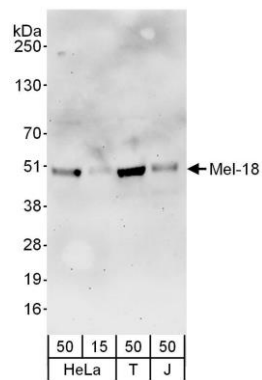
Western Blot 1:2,000 – 1:10,000

Immunoprecipitation Not recommended

**ADDITIONAL INFO** <https://www.bethyl.com/product/A303-580A-T>

Use the link above to view SDS, a current list of citations, and other product specific information.

This document certifies that this product has met all of the quality control standards defined by Bethyl Laboratories, Inc.  
Michael Spencer, PhD Date: June 6, 2022



**Detection of human Mel-18 by western blot.** *Samples:* Whole cell lysate from HeLa (15 and 50 µg), HEK293T (T; 50 µg) and Jurkat (J; 50 µg) cells. *Antibodies:* Affinity purified rabbit anti-Mel-18 antibody A303-580A used for WB at 0.1 µg/ml. *Detection:* Chemiluminescence with an exposure time of 3 minutes.