

IGF2BP2 Antibody

Rabbit Polyclonal

Antigen Affinity Purified

Protein ID NP_006539.3

Catalog No. A303-317A-T

GeneID 10644

Lot No. A303-317A-T-1

APPLICATIONS WB, IP, IHC

SPECIES REACTIVITY Human

AMOUNT 10 µl

CONCENTRATION 1000 µg/ml

STORAGE/SHELF LIFE 2 – 8°C / 1 year from date of receipt

PHYSICAL STATE Liquid

BUFFER Tris-citrate/phosphate buffer, pH 7 to 8 containing 0.09% Sodium Azide

ISOTYPE IgG

ORIGIN USA

PRODUCTION PROCEDURES Antibody was affinity purified using an epitope specific to IGF2BP2 immobilized on solid support.

The epitope recognized by A303-317A-T maps to a region between residue 549 and 599 of human Insulin-Like Growth Factor 2 mRNA Binding Protein 2 using the numbering given in entry NP_006539.3 (GeneID 10644).

APPLICATIONS Centrifuge tube to remove product from lid. Optimal working dilutions should be determined experimentally by the investigator. Prepare working dilution immediately before use.

Western Blot 1:2,000 – 1:10,000

Immunoprecipitation 2 – 10 µg/mg lysate

Immunohistochemistry 1:500 – 1:2,000. Epitope retrieval with citrate buffer pH 6.0 is recommended for FFPE tissue sections.

ADDITIONAL INFO <https://www.bethyl.com/product/A303-317A-T>

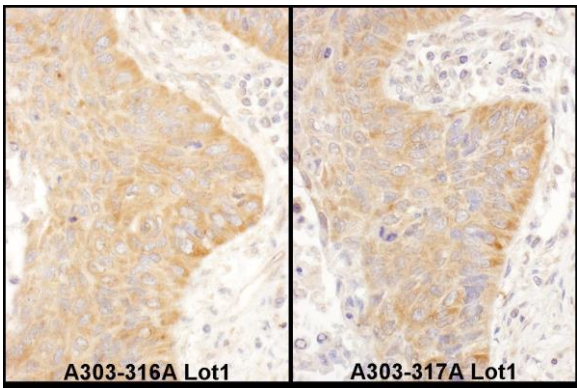
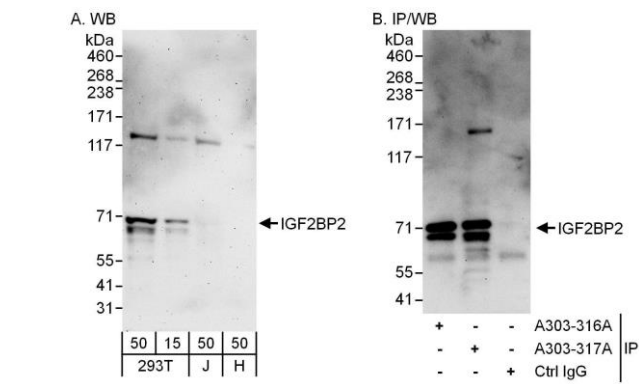
Use the link above to view SDS, a current list of citations, and other product specific information.

IP-western blot protocol: https://www.bethyl.com/content/protocol_IP_WB

This document certifies that this product has met all of the quality control standards defined by Bethyl Laboratories, Inc.

Michael Spencer, PhD

Date: June 6, 2022



Detection of human IGF2BP2 by western blot and immunoprecipitation. *Samples:* Whole cell lysate from HEK293T (15 and 50 µg for WB; 1 mg for IP, 20% of IP loaded), Jurkat (J; 50 µg) and HeLa (H; 50 µg) cells. *Antibodies:* Affinity purified rabbit anti-IGF2BP2 antibody A303-317A used for WB at 0.1 µg/ml (A) and 1 µg/ml (B) and used for IP at 6 µg/mg lysate. IGF2BP2 was also immunoprecipitated by rabbit anti-IGF2BP2 antibody A303-316A, which recognizes an upstream epitope. *Detection:* Chemiluminescence with exposure times of 3 minutes (A) and 30 seconds (B).

Detection of human IGF2BP2 by immunohistochemistry. *Samples:* FFPE serial sections of human non-small cell lung cancer. *Antibody:* Affinity purified rabbit anti-IGF2BP2 (Cat. No. A303-316A Lot1 left panel and Cat. No. A303-317A Lot1 right panel) used at a dilution of 1:1,000 (1 µg/ml). *Detection:* DAB