

# IGF2BP2 Antibody

Rabbit Polyclonal

Antigen Affinity Purified

Protein ID NP\_006539.3

Catalog No. A303-316A-T

GeneID 10644

Lot No. A303-316A-T-1

<b>APPLICATIONS</b>	IP, IHC
<b>SPECIES REACTIVITY</b>	Human
<b>PRESUMED REACTIVITY</b>	Based on 100% sequence identity, this antibody is predicted to react with Orangutan
<b>AMOUNT</b>	10 µl
<b>CONCENTRATION</b>	1000 µg/ml
<b>STORAGE/SHELF LIFE</b>	2 – 8°C / 1 year from date of receipt
<b>PHYSICAL STATE</b>	Liquid
<b>BUFFER</b>	Tris-citrate/phosphate buffer, pH 7 to 8 containing 0.09% Sodium Azide
<b>ISOTYPE</b>	IgG
<b>ORIGIN</b>	USA
<b>PRODUCTION PROCEDURES</b>	Antibody was affinity purified using an epitope specific to IGF2BP2 immobilized on solid support.

The epitope recognized by A303-316A-T maps to a region between residue 150 and 200 of human Insulin-Like Growth Factor 2 mRNA Binding Protein 2 using the numbering given in entry NP\_006539.3 (GeneID 10644).

Immunoglobulin concentration was determined by extinction coefficient: absorbance at 280 nm of 1.4 equals 1.0 mg of IgG.

**APPLICATIONS** Centrifuge tube to remove product from lid. Optimal working dilutions should be determined experimentally by the investigator. Prepare working dilution immediately before use.

Western Blot Not recommended

Immunoprecipitation 2 – 10 µg/mg lysate

Immunohistochemistry 1:500 – 1:2,000. Epitope retrieval with citrate buffer pH 6.0 is recommended for FFPE tissue sections.

**ADDITIONAL INFO** <https://www.bethyl.com/product/A303-316A-T>

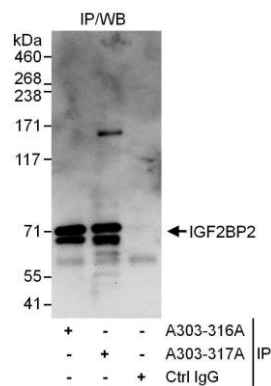
Use the link above to view SDS, a current list of citations, and other product specific information.

IP-western blot protocol: [https://www.bethyl.com/content/protocol\\_IP\\_WB](https://www.bethyl.com/content/protocol_IP_WB)

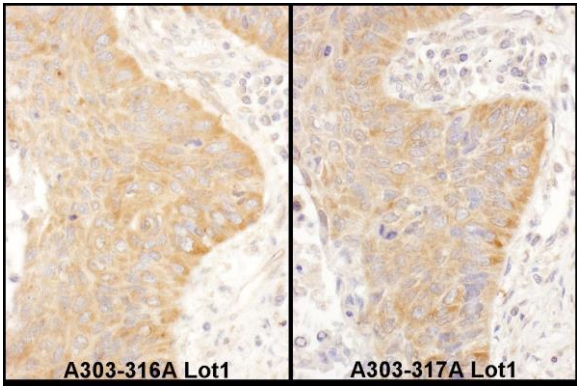
This document certifies that this product has met all of the quality control standards defined by Bethyl Laboratories, Inc.

Michael Spencer, PhD

Date: June 6, 2022



**Detection of human IGF2BP2 by western blot of immunoprecipitates.** *Samples:* Whole cell lysate (1 mg for IP, 20% of IP loaded) from HEK293T cells. *Antibodies:* Affinity purified rabbit anti-IGF2BP2 antibody A303-316A used for IP at 6 µg/mg lysate. IGF2BP2 was also immunoprecipitated by rabbit anti-IGF2BP2 antibody A303-317A, which recognizes a downstream epitope. For blotting immunoprecipitated IGF2BP2, A303-317A was used at 1 µg/ml. *Detection:* Chemiluminescence with an exposure time of 30 seconds.



**Detection of human IGF2BP2 by immunohistochemistry.** *Samples:* FFPE serial sections of human non-small cell lung cancer. *Antibody:* Affinity purified rabbit anti-IGF2BP2 (Cat. No. A303-316A Lot1 left panel and Cat. No. A303-317A Lot1 right panel) used at a dilution of 1:1,000 (1 µg/ml). *Detection:* DAB