

RNF2 Antibody

Rabbit Polyclonal

Antigen Affinity Purified Protein ID NP_009143.1

Catalog No. A302-869A-T GeneID 6045

Lot No. A302-869A-T-1

APPLICATIONS	WB, IP, IHC, ChIP-Seq
SPECIES REACTIVITY	Human, Mouse
PRESUMED REACTIVITY	Based on 100% sequence identity, this antibody is predicted to react with Rat and Orangutan
AMOUNT	10 µl
CONCENTRATION	1000 µg/ml
STORAGE/SHELF LIFE	2 – 8°C / 1 year from date of receipt
PHYSICAL STATE	Liquid
BUFFER	Tris-citrate/phosphate buffer, pH 7 to 8 containing 0.09% Sodium Azide
ISOTYPE	IgG
ORIGIN	USA
PRODUCTION PROCEDURES	Antibody was affinity purified using an epitope specific to RNF2 immobilized on solid support.

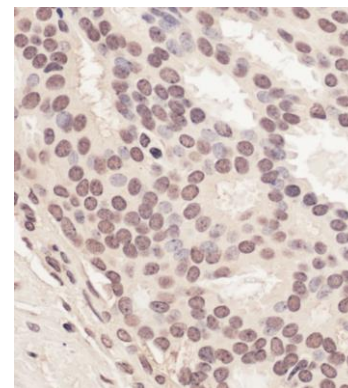
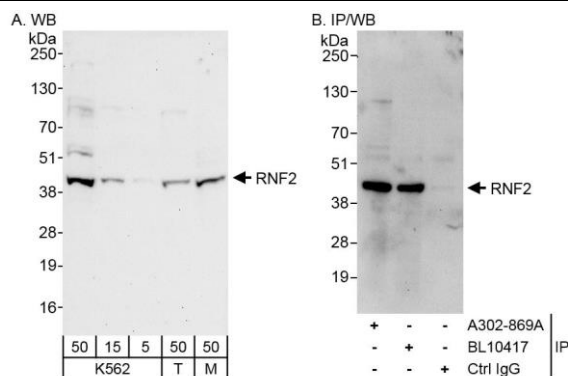
The epitope recognized by A302-869A-T maps to a region between residue 150 and 200 of human Ring Finger Protein 2 using the numbering given in entry NP_009143.1 (GeneID 6045).

APPLICATIONS Centrifuge tube to remove product from lid. Optimal working dilutions should be determined experimentally by the investigator. Prepare working dilution immediately before use.

Western Blot	1:2,000 – 1:10,000
Immunoprecipitation	2 – 5 µg/mg lysate
Immunohistochemistry	1:500 – 1:2,000. Epitope retrieval with citrate buffer pH 6.0 is recommended for FFPE tissue sections.
ChIP-Seq	ChIP-Seq 10 µg as per Ram O et al., Cell. 2011 Dec 23;147(7):1628–39.

ADDITIONAL INFO <https://www.bethyl.com/product/A302-869A-T>
Use the link above to view SDS, a current list of citations, and other product specific information.
IP-western blot protocol: https://www.bethyl.com/content/protocol_IP_WB

This document certifies that this product has met all of the quality control standards defined by Bethyl Laboratories, Inc.
Michael Spencer, PhD Date: June 6, 2022



Detection of human and mouse RNF2 by western blot (h&m) and immunoprecipitation (h). *Samples:* Whole cell lysate from K-562 (5, 15 and 50 μ g for WB; 1 mg for IP, 20% of IP loaded), HEK293T (T; 50 μ g), and mouse NIH 3T3 (M; 50 μ g) cells. *Antibodies:* Affinity purified rabbit anti-RNF2 antibody A302-869A used for WB at 0.1 μ g/ml (A) and 1 μ g/ml (B) and used for IP at 3 μ g/mg lysate. RNF2 was also immunoprecipitated by rabbit anti-RNF2 antibody BL10417, which recognizes a downstream epitope. *Detection:* Chemiluminescence with exposure times of 30 seconds (A and B).

Detection of human RNF2 by immunohistochemistry. *Sample:* FFPE section of human prostate carcinoma. *Antibody:* Affinity purified rabbit anti-RNF2 (Cat. No. A302-869A Lot1) used at a dilution of 1:1,000 (1 μ g/ml). *Detection:* Vector ImmPACT NovaRED