

MAX Antibody

Rabbit Polyclonal

Antigen Affinity Purified

Protein ID NP_002373.3

Catalog No. A302-866A-T

GeneID 4149

Lot No. A302-866A-T-1

APPLICATIONS	WB, IP, IHC
SPECIES REACTIVITY	Human
PRESUMED REACTIVITY	Based on 100% sequence identity, this antibody is predicted to react with Mouse, Chicken and Cat
AMOUNT	10 µl
CONCENTRATION	1000 µg/ml
STORAGE/SHELF LIFE	2 – 8°C / 1 year from date of receipt
PHYSICAL STATE	Liquid
BUFFER	Tris-citrate/phosphate buffer, pH 7 to 8 containing 0.09% Sodium Azide
ISOTYPE	IgG
ORIGIN	USA
PRODUCTION PROCEDURES	Antibody was affinity purified using an epitope specific to MAX immobilized on solid support.

The epitope recognized by A302-866A-T maps to a region between residue 110 and 160 of human MYC Associated Factor X using the numbering given in entry NP_002373.3 (GeneID 4149).

APPLICATIONS Centrifuge tube to remove product from lid. Optimal working dilutions should be determined experimentally by the investigator. Prepare working dilution immediately before use.

Western Blot 1:2,000 – 1:10,000

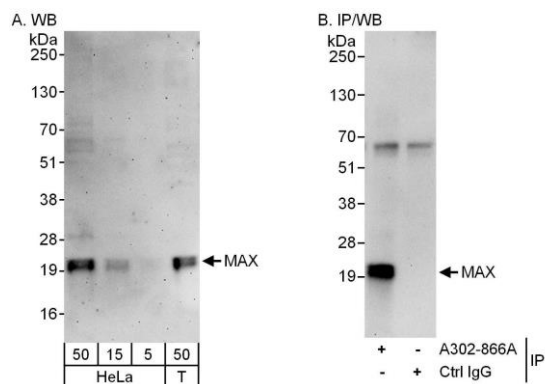
Immunoprecipitation 2 – 5 µg/mg lysate

Immunohistochemistry 1:500 – 1:2,000. Epitope retrieval with citrate buffer pH 6.0 is recommended for FFPE tissue sections.

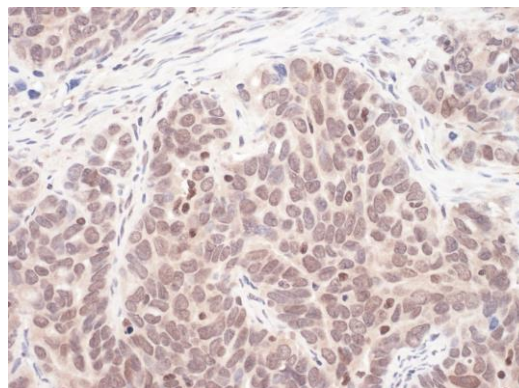
ADDITIONAL INFO <https://www.bethyl.com/product/A302-866A-T>

Use the link above to view SDS, a current list of citations, and other product specific information.
IP-western blot protocol: https://www.bethyl.com/content/protocol_IP_WB

This document certifies that this product has met all of the quality control standards defined by Bethyl Laboratories, Inc.
Michael Spencer, PhD Date: June 6, 2022



Detection of human MAX by western blot and immunoprecipitation. *Samples:* Whole cell lysate (5, 15 and 50 µg) for WB; 1 mg for IP, 20% of IP loaded) from HeLa and HEK293T (T; 50 µg) cells. *Antibodies:* Affinity purified rabbit anti-MAX antibody A302-866A used for WB at 0.1 µg/ml (A) and 0.4 µg/ml (B) and used for IP at 3 µg/mg lysate. *Detection:* Chemiluminescence with exposure times of 3 minutes (A) and 30 seconds (B).



Detection of human MAX by immunohistochemistry. *Sample:* FFPE section of human ovarian carcinoma. *Antibody:* Affinity purified rabbit anti-MAX (Cat. No. A302-866A Lot1) used at a dilution of 1:1,000 (1 µg/ml). *Detection:* Vector ImmPACT NovaRED