

# Sequestosome-1 Antibody

Rabbit Polyclonal

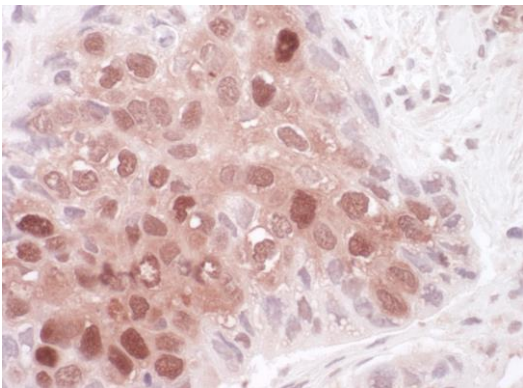
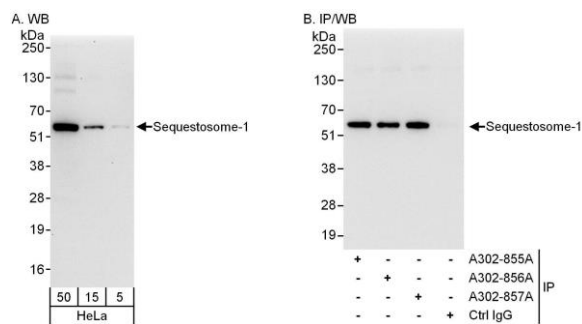
Antigen Affinity Purified Protein ID NP\_003891.1

Catalog No. A302-856A-T GeneID 8878

Lot No. A302-856A-T-1

<b>APPLICATIONS</b>	WB, IP, IHC
<b>SPECIES REACTIVITY</b>	Human
<b>PRESUMED REACTIVITY</b>	Based on 100% sequence identity, this antibody is predicted to react with Mouse, Rat and Orangutan
<b>AMOUNT</b>	10 µl
<b>CONCENTRATION</b>	1000 µg/ml
<b>STORAGE/SHELF LIFE</b>	2 – 8°C / 1 year from date of receipt
<b>PHYSICAL STATE</b>	Liquid
<b>BUFFER</b>	Tris-citrate/phosphate buffer, pH 7 to 8 containing 0.09% Sodium Azide
<b>ISOTYPE</b>	IgG
<b>ORIGIN</b>	USA
<b>PRODUCTION PROCEDURES</b>	Antibody was affinity purified using an epitope specific to Sequestosome-1 immobilized on solid support.  The epitope recognized by A302-856A-T maps to a region between residue 375 and 425 of human Sequestosome-1 using the numbering given in entry NP_003891.1 (GeneID 8878).
<b>APPLICATIONS</b>	Centrifuge tube to remove product from lid. Optimal working dilutions should be determined experimentally by the investigator. Prepare working dilution immediately before use.  Western Blot 1:2,000 – 1:10,000 Immunoprecipitation 2 – 5 µg/mg lysate Immunohistochemistry 1:500 – 1:2,000. Epitope retrieval with citrate buffer pH 6.0 is recommended for FFPE tissue sections.
<b>ADDITIONAL INFO</b>	<a href="https://www.bethyl.com/product/A302-856A-T">https://www.bethyl.com/product/A302-856A-T</a> Use the link above to view SDS, a current list of citations, and other product specific information. IP-western blot protocol: <a href="https://www.bethyl.com/content/protocol_IP_WB">https://www.bethyl.com/content/protocol_IP_WB</a>

This document certifies that this product has met all of the quality control standards defined by Bethyl Laboratories, Inc.  
Michael Spencer, PhD Date: June 6, 2022



**Detection of human Sequestosome-1 by western blot and immunoprecipitation.** *Samples:* Whole cell lysate (5, 15 and 50 µg for WB; 1 mg for IP, 20% of IP loaded) from HeLa cells. *Antibodies:* Affinity purified rabbit anti-Sequestosome-1 antibody A302-856A used for WB at 0.1 µg/ml (A) and 0.4 µg/ml (B) and used for IP at 3 µg/mg lysate. Sequestosome-1 was also immunoprecipitated by rabbit anti-Sequestosome-1 antibodies A302-855A and A302-857A, which recognize other epitopes. *Detection:* Chemiluminescence with exposure times of 30 seconds (A) and 3 seconds (B).

**Detection of human Sequestosome-1 by immunohistochemistry.** *Sample:* FFPE section of human lung carcinoma. *Antibody:* Affinity purified rabbit anti-Sequestosome-1 (Cat. No. A302-856A Lot1) used at a dilution of 1:1,000 (1µg/ml). *Detection:* Vector Laboratories ImmPACT NovaRED Peroxidase Substrate