

CBX2 Antibody

Rabbit Polyclonal

Antigen Affinity Purified

Protein ID NP_005180.1

Catalog No. A302-524A-T

GeneID 84733

Lot No. A302-524A-T-4

APPLICATIONS	IP, ChIP-Seq
SPECIES REACTIVITY	Human
PRESUMED REACTIVITY	Based on 100% sequence identity, this antibody is predicted to react with Mouse
AMOUNT	10 µl
CONCENTRATION	1000 µg/ml
STORAGE/SHELF LIFE	2 – 8°C / 1 year from date of receipt
PHYSICAL STATE	Liquid
BUFFER	Tris-citrate/phosphate buffer, pH 7 to 8 containing 0.09% Sodium Azide
ISOTYPE	IgG
ORIGIN	USA
PRODUCTION PROCEDURES	Antibody was affinity purified using an epitope specific to CBX2 immobilized on solid support.

The epitope recognized by A302-524A-T maps to a region between residue 482 and 532 of human chromobox homolog 2 using the numbering given in entry NP_005180.1 (GeneID 84733).

Immunoglobulin concentration was determined by extinction coefficient: absorbance at 280 nm of 1.4 equals 1.0 mg of IgG.

APPLICATIONS

Centrifuge tube to remove product from lid. Optimal working dilutions should be determined experimentally by the investigator. Prepare working dilution immediately before use.

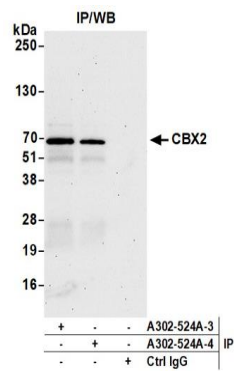
Western Blot	Not recommended. A302-524A has not performed satisfactorily when used for WB of CBX2 in crude preparations (e.g. whole cell lysate). This antibody can be used for WB of enriched (e.g. immunoprecipitated) sources of CBX2.
Immunoprecipitation	2 – 10 µg/mg lysate
ChIP-Seq	1 µg

ADDITIONAL INFO

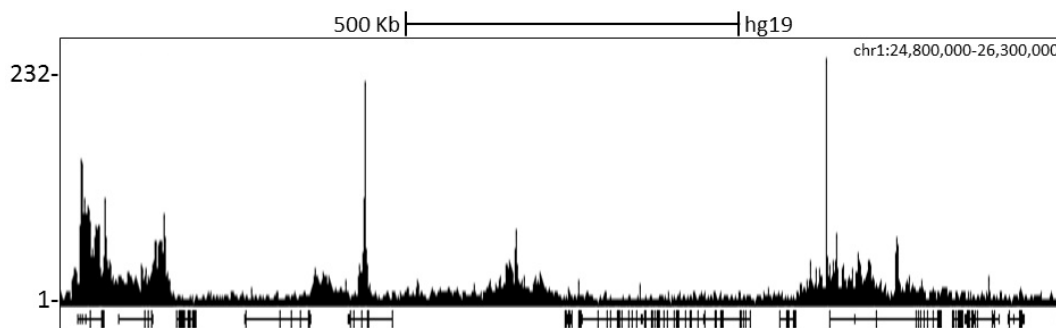
<https://www.bethyl.com/product/A302-524A-T>

Use the link above to view SDS, a current list of citations, and other product specific information.
IP-western blot protocol: https://www.bethyl.com/content/protocol_IP_WB

This document certifies that this product has met all of the quality control standards defined by Bethyl Laboratories, Inc.
Michael Spencer, PhD Date: June 6, 2022



Detection of human CBX2 by western blot of immunoprecipitates. *Samples:* Whole cell lysate (1.0 mg per IP reaction; 20% of IP loaded) from HeLa cells prepared using NETN lysis buffer. *Antibodies:* Affinity purified rabbit anti-CBX2 antibody A302-524A (lot A302-524A-4) used for IP at 6 µg per reaction. CBX2 was also immunoprecipitated by a previous lot of this antibody (lot A302-524A-3). For blotting immunoprecipitated CBX2, A302-524A was used at 1 µg/ml. *Detection:* Chemiluminescence with an exposure time of 30 seconds.



Localization of CBX2 Binding Sites by ChIP-seq. Chromatin from K562 cells was immunoprecipitated with anti-CBX2 antibody A302-524A and analyzed by DNA sequencing. The figure illustrates the peak distribution of CBX2 binding within a 1.5 Mb region of chromosome 1 as detected using anti-CBX2 antibody A302-524A. ChIP-seq validation performed by Diagenode, Denville, NJ.