

WDR5 Antibody

Rabbit Polyclonal

Antigen Affinity Purified Protein ID NP_060058.1

Catalog No. A302-430A-T GeneID 11091

Lot No. A302-430A-T-1

APPLICATIONS	WB, IHC
SPECIES REACTIVITY	Human, Mouse, Rat
PRESUMED REACTIVITY	Based on 100% sequence identity, this antibody is predicted to react with D. melanogaster, X. tropicalis and Bovine
AMOUNT	10 µl
CONCENTRATION	200 µg/ml
STORAGE/SHELF LIFE	2 – 8°C / 1 year from date of receipt
PHYSICAL STATE	Liquid
BUFFER	Tris-buffered Saline containing 0.1% BSA and 0.09% Sodium Azide
ISOTYPE	IgG
ORIGIN	USA
PRODUCTION PROCEDURES	Antibody was affinity purified using an epitope specific to WDR5 immobilized on solid support.

The epitope recognized by A302-430A-T maps to a region between residue 50 and 100 of human WD repeat domain 5 using the numbering given in entry NP_060058.1 (GeneID 11091).

APPLICATIONS Centrifuge tube to remove product from lid. Optimal working dilutions should be determined experimentally by the investigator. Prepare working dilution immediately before use.

Western Blot 1:2,000 – 1:10,000

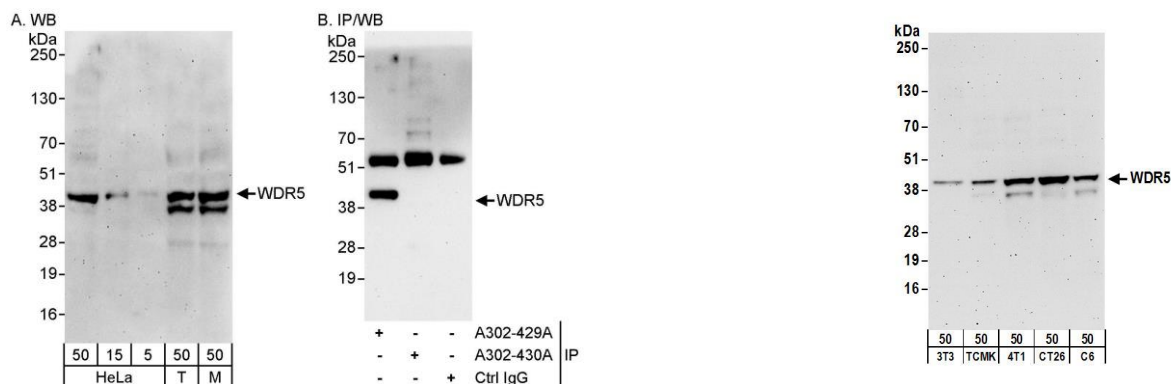
Immunoprecipitation Not recommended. Use rabbit anti-WDR5 antibody A302-429A.

Immunohistochemistry 1:200 – 1:1,000. Epitope retrieval with citrate buffer pH 6.0 is recommended for FFPE tissue sections.

ADDITIONAL INFO <https://www.bethyl.com/product/A302-430A-T>

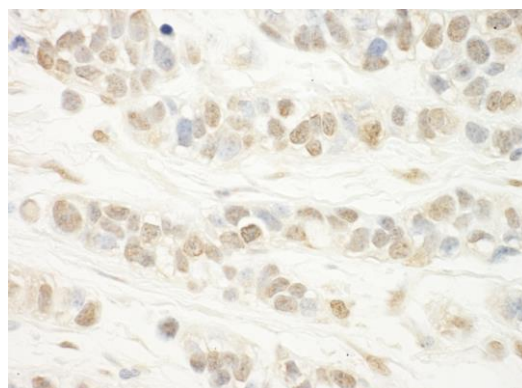
Use the link above to view SDS, a current list of citations, and other product specific information.

This document certifies that this product has met all of the quality control standards defined by Bethyl Laboratories, Inc.
Michael Spencer, PhD Date: June 6, 2022



Detection of human and mouse WDR5 by western blot (h&m) and immunoprecipitation (h). *Samples:* Whole cell lysate from HeLa (5, 15 and 50 µg for WB; 1 mg for IP, 20% of IP loaded), HEK293T (T; 50 µg), and mouse NIH 3T3 (M; 50 µg) cells. *Antibodies:* Affinity purified rabbit anti-WDR5 antibody A302-430A used for WB at 0.04 µg/ml (A) and 1 µg/ml (B) and used for IP at 10 µg/mg lysate. WDR5 was successfully immunoprecipitated by rabbit anti-WDR5 antibody A302-429A, which recognizes an upstream epitope. *Detection:* Chemiluminescence with exposure times of 3 minutes (A) and 30 seconds (B).

Detection of mouse and rat WDR5 by western blot. *Samples:* Whole cell lysate (50 µg) from NIH 3T3, TCMK-1, 4T1, CT26.WT, and rat C6 cells. *Antibodies:* Affinity purified rabbit anti-WDR5 antibody A302-430A (lot A302-430A-1) used for WB at 0.1 µg/ml. *Detection:* Chemiluminescence with an exposure time of 3 minutes.



Detection of human WDR5 by immunohistochemistry. *Sample:* FFPE section of human breast carcinoma. *Antibody:* Affinity purified rabbit anti-WDR5 (Cat. No. A302-430A Lot1) used at a dilution of 1:200 (1 µg/ml). *Detection:* DAB